

**ADF&G Informational Handout for
Charter Management Implementation Committee Meeting
October 21, 2016**

Table 1. Preliminary charter halibut harvest estimates for Areas 2C and 3A for 2016.

Area	Mean wt (lb)	Prelimin Logbook Harvest (no. fish)	Yield (lb)	O26 RelMort (lb)	Total Charter Removals (lb)	Allocation (lb)	Overage (lb)	Overage %
2C	11.95	66,286	792,047	51,599	843,646	906,000	-62,354	-6.9%
3A	12.67	155,032	1,964,050	16,473	1,980,523	1,814,000	166,523	+9.2%

Table 2. Comparison of 2016 projections and preliminary estimates.

Area	Estimate	Projected	Preliminary Estimate)	Observed Relative to Predicted
2C	Harvest (no. fish)	70,165	66,286	-5.5%
	Average wt (lb)	11.79	11.95	+1.4%
	Yield (Mlb)	0.827	0.792	-4.2%
	O26 rel mort (Mlb)	0.050	0.052	+4.0%
	Total removals (Mlb)	0.877	0.844	-3.8%
3A	Harvest (no. fish)	144,810	155,032	+7.1%
	Average wt (lb)	12.24	12.67	+3.5%
	Yield (Mlb)	1.772	1.964	+10.8%
	O26 rel mort (Mlb)	0.027	0.016	-38.0%
	Total removals (Mlb)	1.799	1.981	+10.1%

Table 3. Comparison of 2015 preliminary (Oct 2015) and final (Oct 2016) estimates.

Area	Estimate	Preliminary	Final	Final Relative to Preliminary
2C	Harvest (no. fish)	68,092	65,656	-3.6%
	Average wt (lb)	11.75	11.69	-0.5%
	Yield (Mlb)	0.800	0.768	-4.0%
	O26 rel mort (Mlb)	0.047	0.046	-1.9%
	Total removals (Mlb)	0.848	0.814	-4.0%
3A	Harvest (no. fish)	160,353	163,632	+2.0%
	Average wt (lb)	12.69	12.63	-0.5%
	Yield (Mlb)	2.035	2.067	+1.5%
	O26 rel mort (Mlb)	0.027	0.027	+0.9%
	Total removals (Mlb)	2.063	2.094	+1.5%

Table 4. Performance of charter management measures recommended annually by the North Pacific Fishery Management Council since 2012.

Area	Year	Management measure	MgmtType	Allocation (Mlb)	Removals (Mlb)	Overage (Mlb)	Overage Percent
2C	2012	One fish, U45-O68 rev. slot	GHL	0.931	0.605	-0.326	-35%
	2013	One fish, U45-O68 rev. slot	GHL	0.788	0.762	-0.026	-3%
	2014	One fish, U44-O76 rev. slot	CSP	0.761	0.827	+0.066	+9%
	2015	One fish, U42-O80 rev slot	CSP	0.851	0.814	-0.037	-4%
	2016	One fish, U43-O80 rev slot	CSP	0.906	0.844	-0.062	-7%
3A	2012	Two fish any size	GHL	3.103	2.284	-0.819	-26%
	2013	Two fish any size	GHL	2.734	2.514	-0.220	-8%
	2014	Two fish, one ≤ 29", one trip/day with halibut harvest.	CSP	1.782	2.068	+0.286	+16%
	2015	Two fish, one ≤ 29", Thursday closed Jun 15-Aug 31, annual limit 5 halibut, one trip/day with halibut harvest.	CSP	1.890	2.094	+0.204	+11%
	2016	Two fish, one ≤ 28", Wednesday closed all year, annual limit 4 halibut, one trip/day with halibut harvest.	CSP	1.814	1.981	+0.167	+9%

Table 5. Status quo forecasts of charter removals in Areas 2C and 3A in 2017 under current regulations using trends in effort, harvest per unit effort, and average weight by subarea. These projections are for planning purposes only, and may differ from later projections used in the analysis.

Area	Harvest (no. fish)	Mean wt (lb)	Yield (Mlb)	O26 Rel Mort (M lb)	Total Removals (M lb)
2C	67,619	12.54	0.848	0.060 (+7.1%)	0.908
3A	149,371	12.87	1.923	0.029 (+1.5%)	1.951

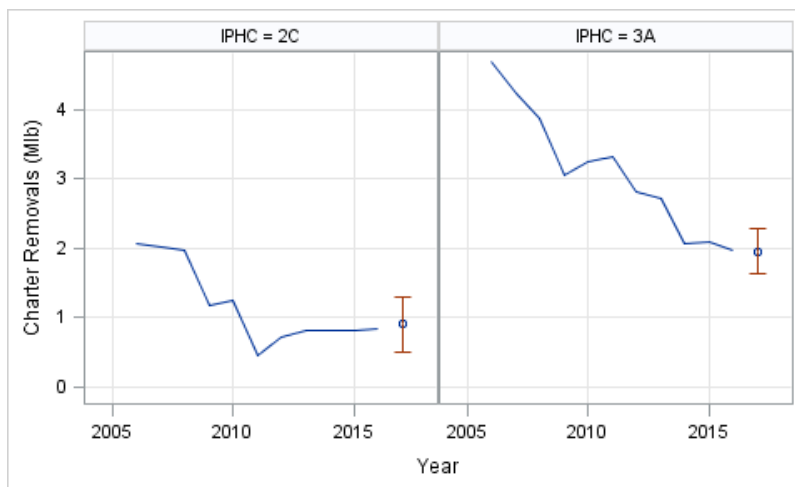


Figure 1. Status quo forecasts of charter removals in Areas 2C and 3A for 2017.

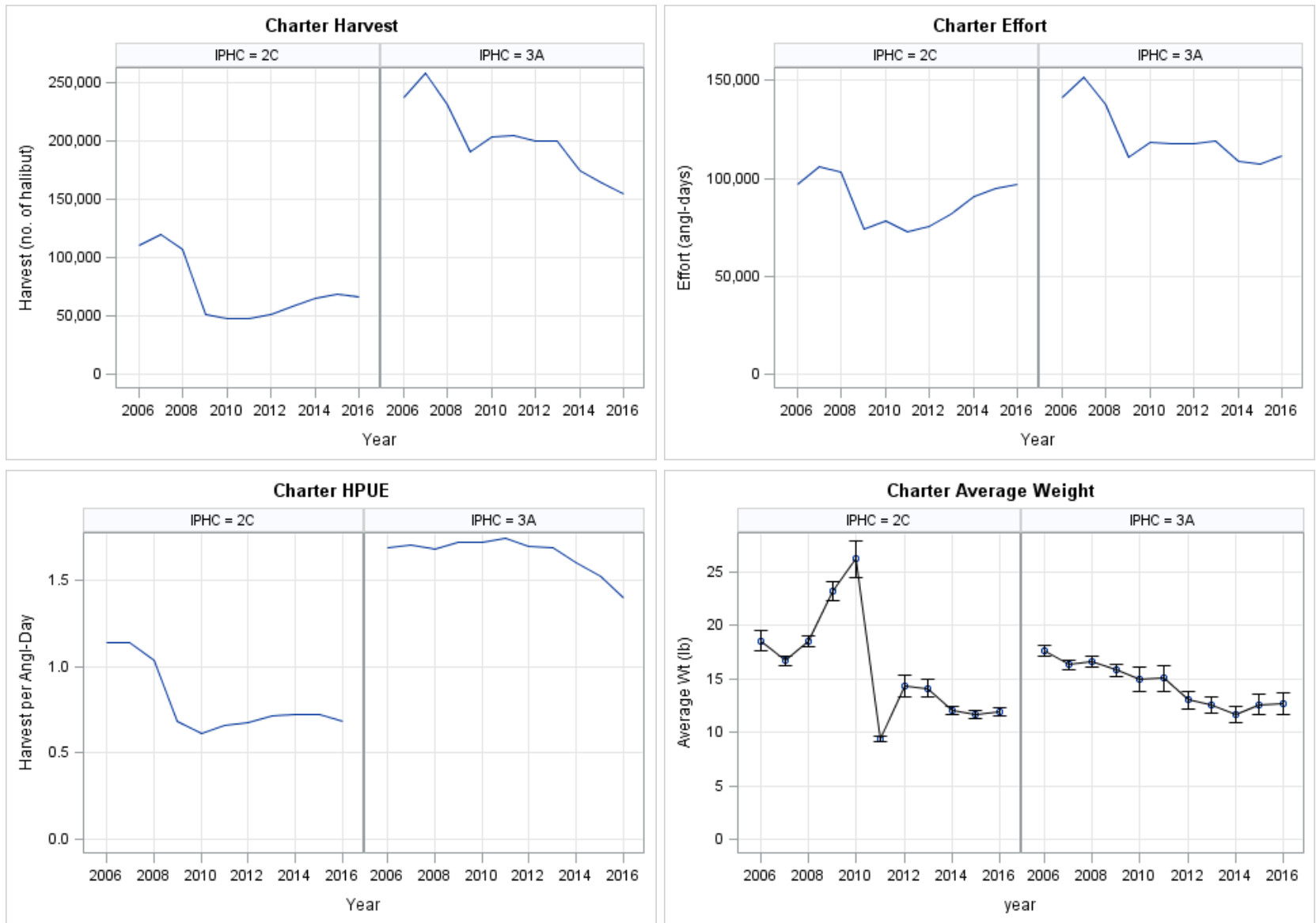


Figure 2. Harvest, effort, harvest-per-unit-effort, and mean weight in IPHC Areas 2C and 3A, 2006-2016.

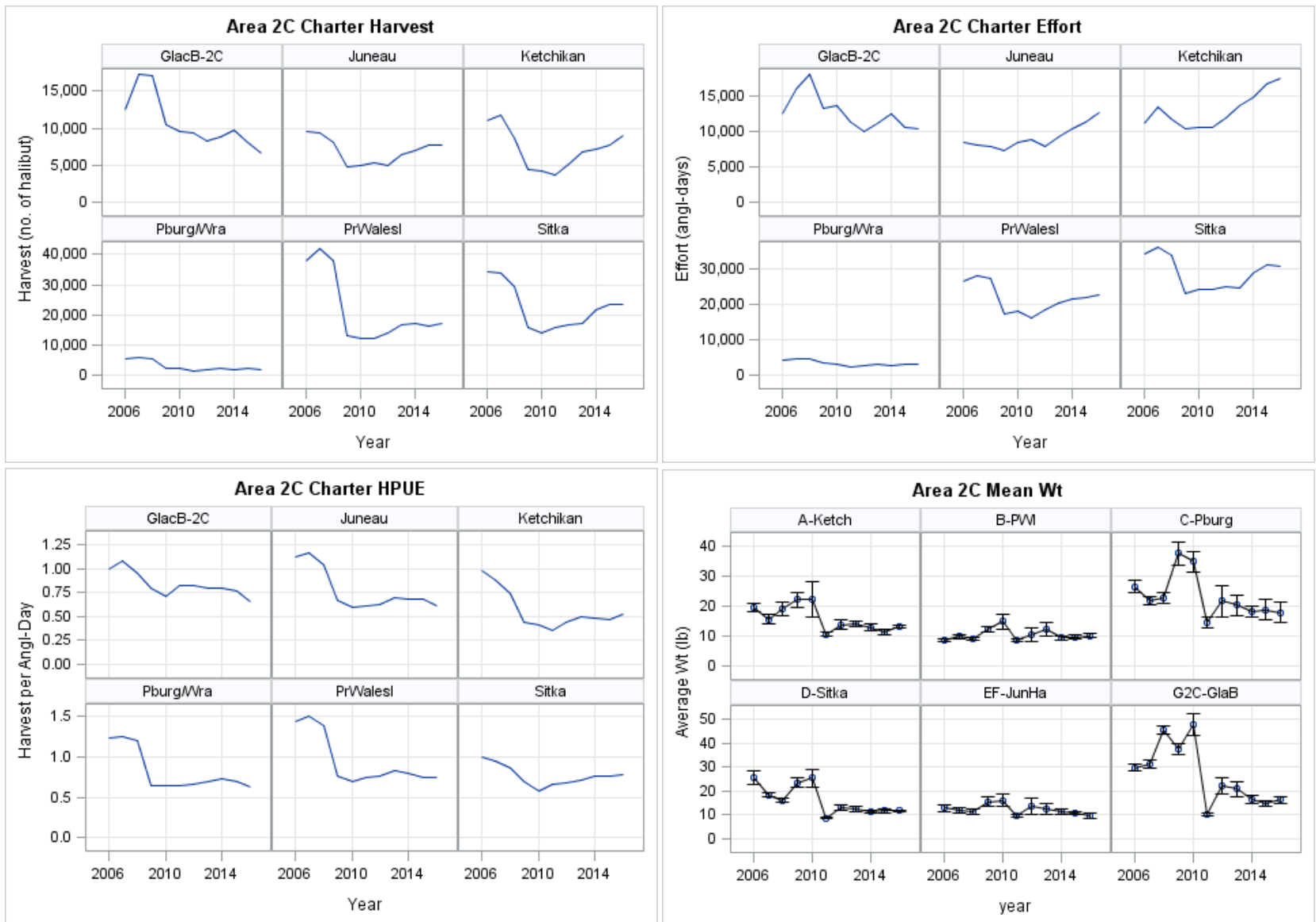


Figure 3. Harvest, effort, harvest-per-unit-effort, and mean weight by subarea in IPHC Area 2C.

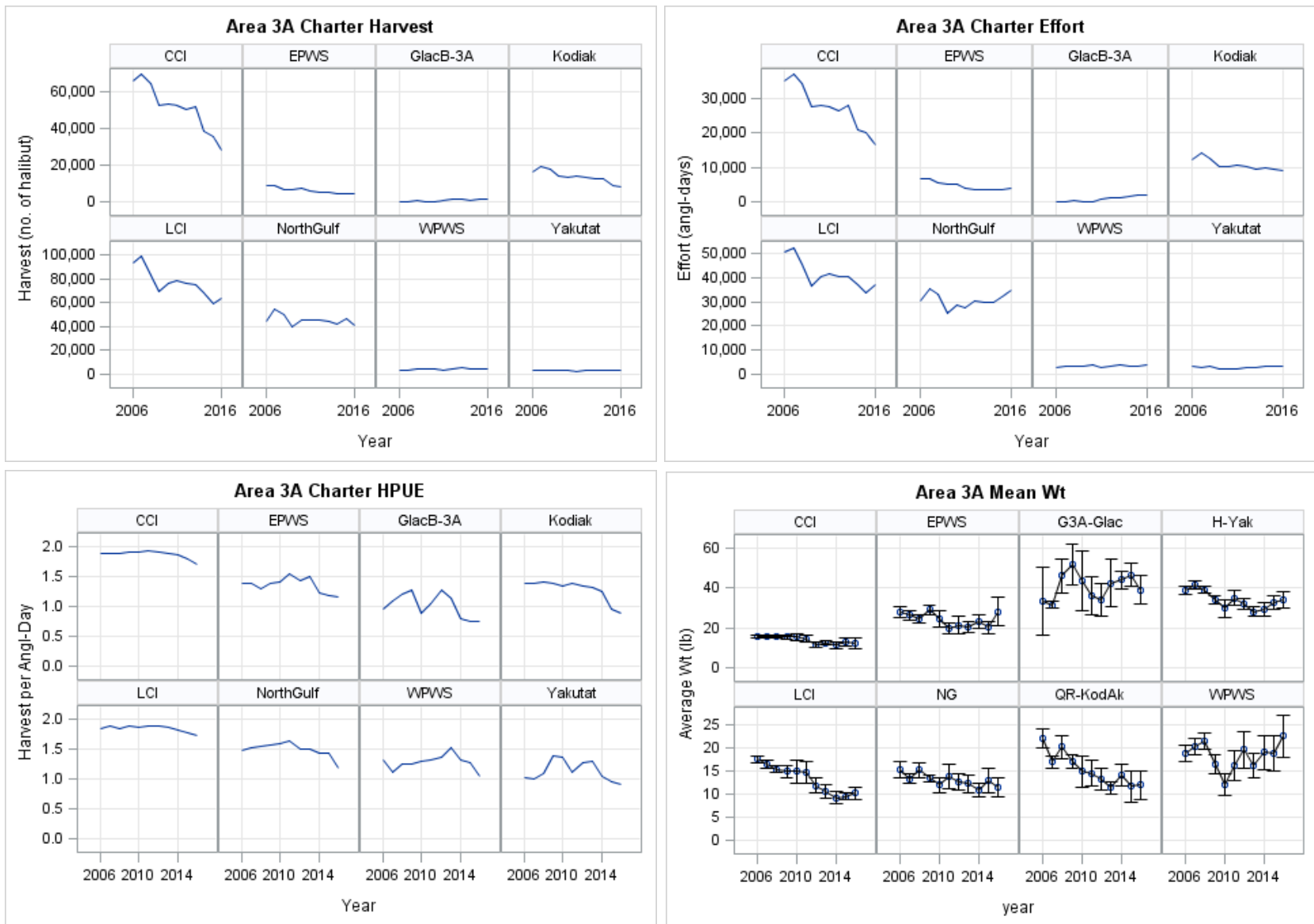


Figure 4. Harvest, effort, harvest-per-unit-effort, and mean weight by subarea in IPHC Area 3A.