

Sport Halibut Harvest 2011 Areas 2C and 3A

**For the North Pacific Fishery Management Council
October 2012**

**Scott Meyer
Alaska Department of Fish and Game**



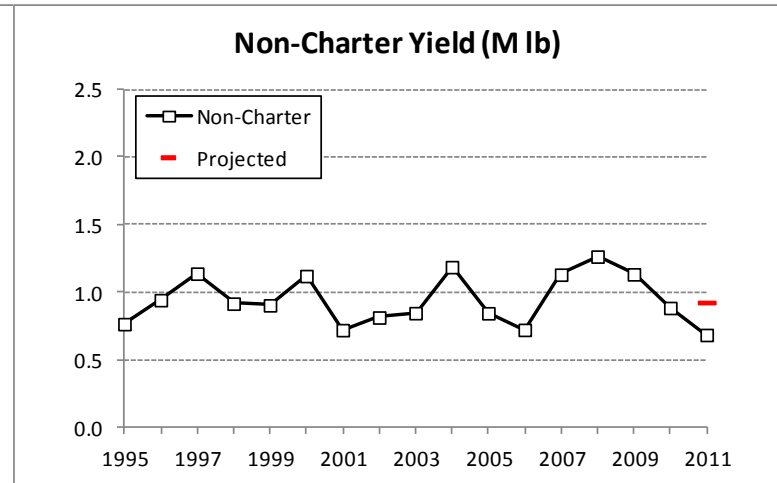
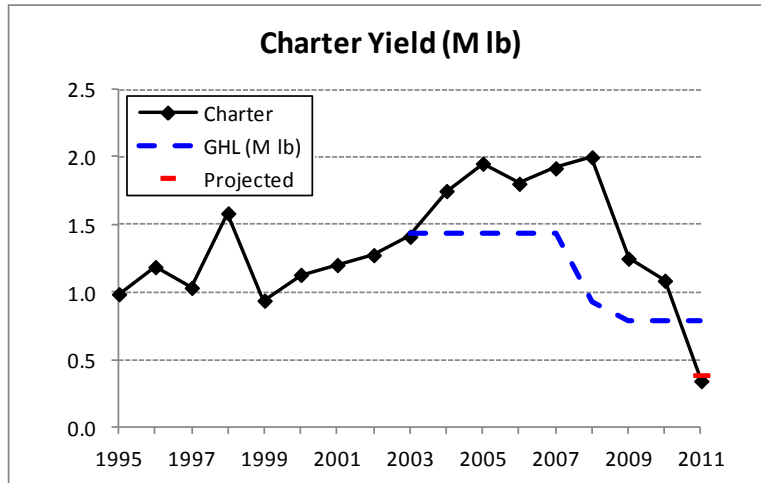
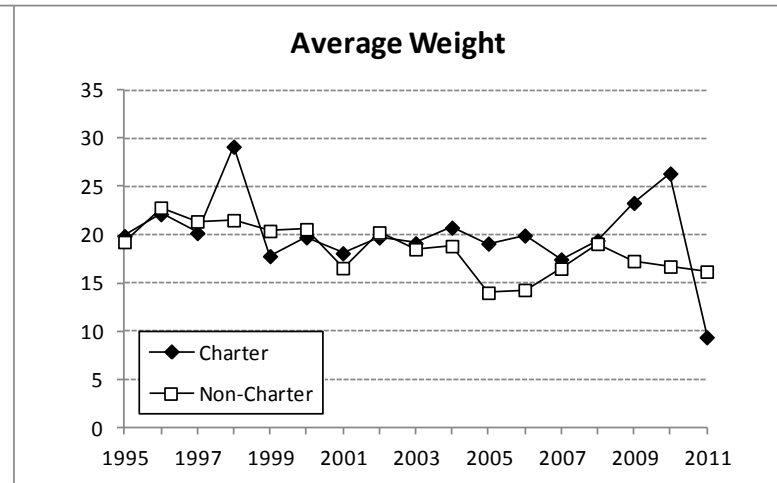
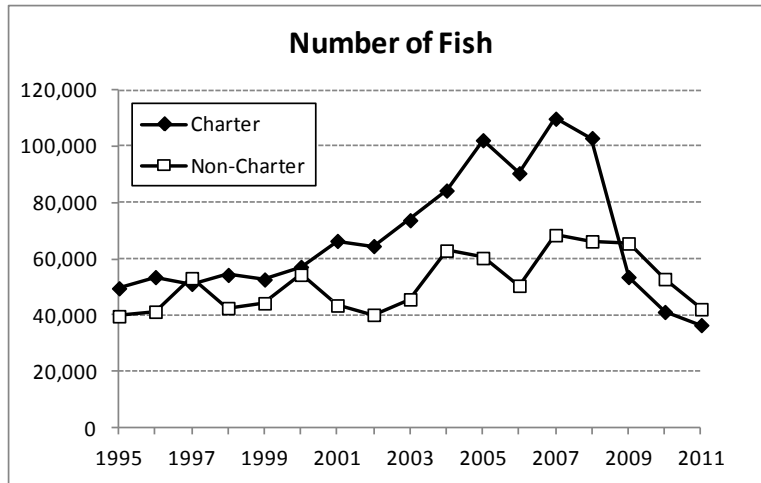
Overview

- 2011 final estimates
- Crew harvest data
- Logbook-SWHS comparisons

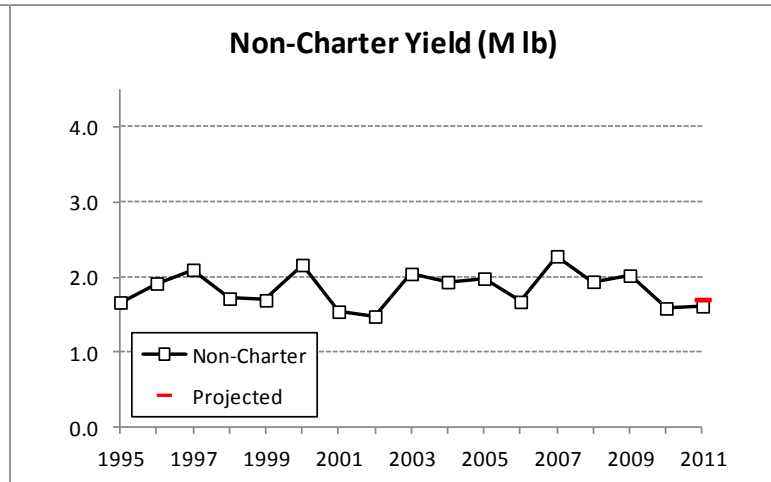
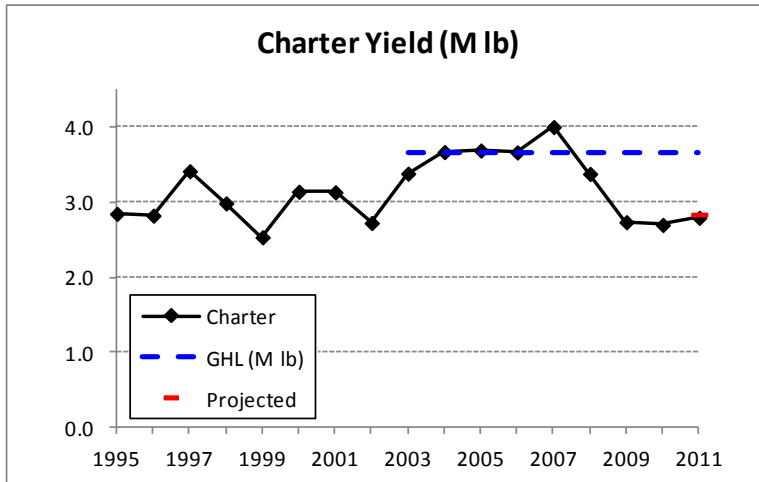
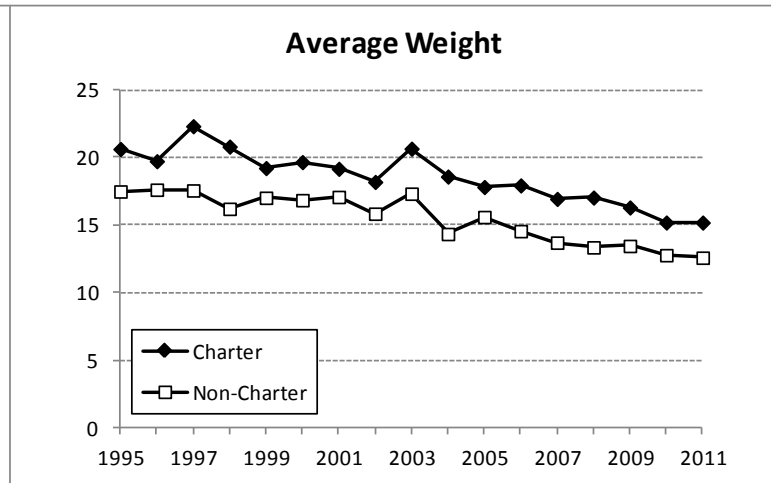
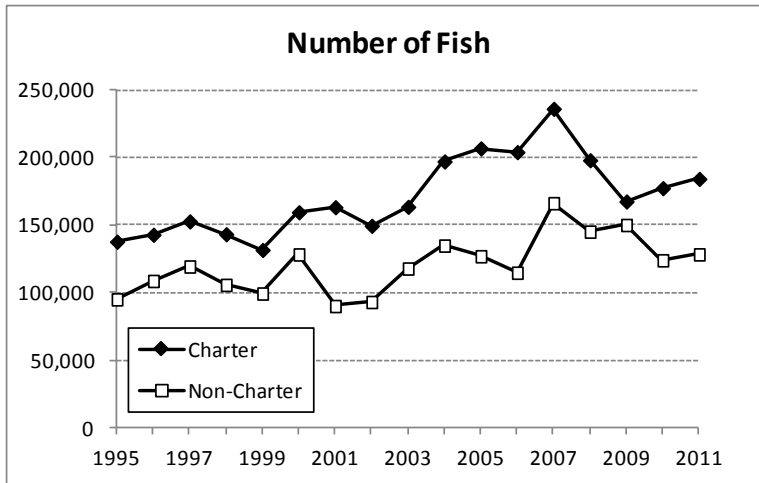
2011 yield estimates finalized (M lb)

Sector	Area 2C	Area 3A
Charter	0.344	2.793
Non-charter	0.685	1.615
Total	1.029	4.408

Area 2C



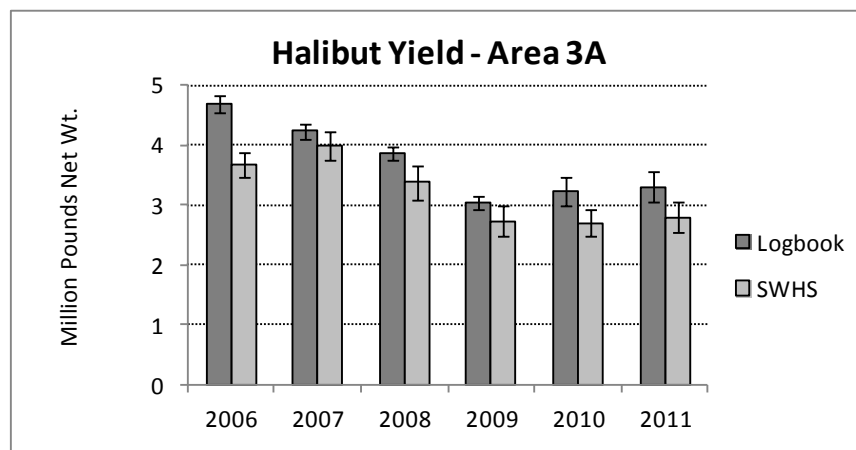
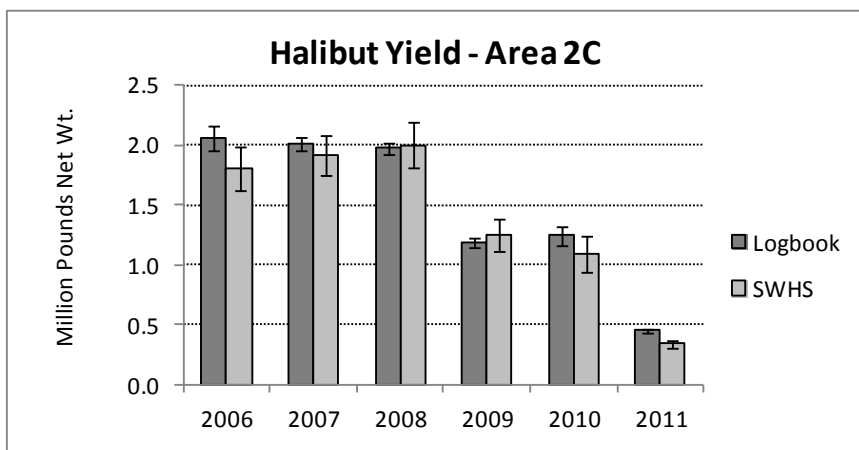
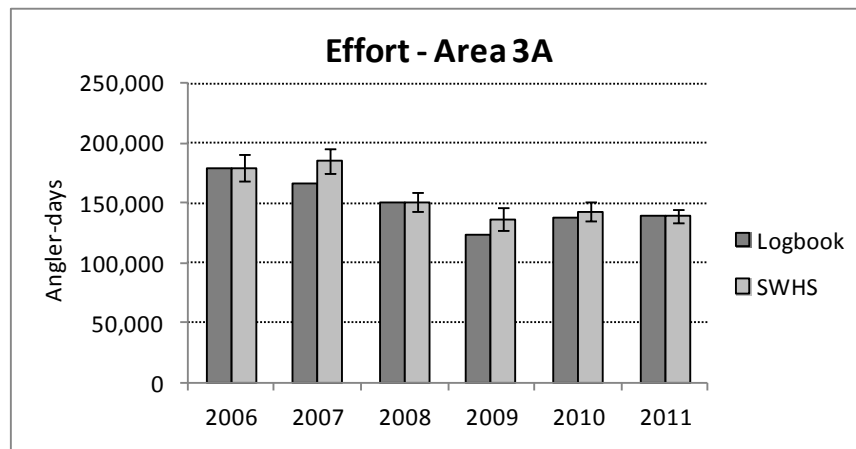
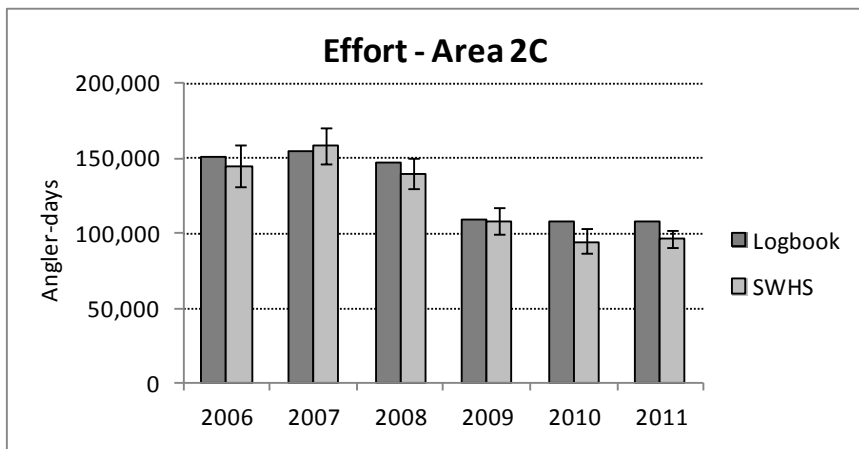
Area 3A



Crew Harvest - Area 3A

Year	Regulations	Crew	Clients	Total	Crew Harvest %
2006	No prohibition	27,704	238,189	265,893	10.4%
2007	State EO prohibited crew harvest 5/01-12/31	228	258,196	258,424	0.1%
2008	State EO prohibited crew harvest 5/24-9/01	1,269	231,363	232,632	0.5%
2009	State EO prohibited crew harvest 5/23-9/01	1,260	190,750	192,010	0.7%
2010	No prohibition	12,339	204,081	216,420	5.7%
2011	No prohibition	13,638	206,183	219,821	6.2%

Logbook versus SWHS



Acknowledgements

- Kathrin Sundet & Gretchen Jennings – Statewide Harvest Survey
- Dora Sigurdsson & Bob Powers – charter logbook
- Mike Jaenicke & Diana Tersteeg – Southeast creel data
- Barbi Failor & Willy Dunne – Southcentral creel data