

# Final 2012 Sport Halibut Harvest Estimates

## Alaska Department of Fish and Game

### 1. Area 2C Harvest:

Table 1.1. Area 2C sport halibut harvest estimates by sector and subarea, 2012.

Subarea	Charter			Non-Charter		
	Avg. Wt. (lb) <sup>a</sup>	No. Fish <sup>b</sup>	Yield (lb)	Avg. Wt. (lb) <sup>a</sup>	No. Fish <sup>b</sup>	Yield (lb)
Ketchikan	13.8	3,010	41,475	15.3	6,978	106,582
Prince of Wales Island	10.6	11,352	119,836	14.0	9,292	130,224
Petersburg/Wrangell	21.6	2,728	58,835	21.2	10,658	226,287
Sitka	13.3	16,300	216,000	16.7	6,005	100,031
Juneau/Haines/Skagway	13.7	3,724	50,946	12.3	11,350	139,606
Glacier Bay	22.2	5,322	118,277	26.4	10,413	274,717
Area 2C	14.3	42,436	605,369	17.9	54,696	977,447

<sup>a</sup>-Average net weight (headed and gutted), rounded to the nearest 0.1 lb.

<sup>b</sup>-Estimated number of fish harvested from the ADF&G Statewide Harvest Survey.

Table 1.2. Approximate 95% confidence intervals for yield estimates (million pounds).

Sector	Estimate	StdErr <sup>a</sup>	Confidence Interval
Charter	0.605	0.034	0.540-0.672
Noncharter	0.977	0.064	0.855-1.104
Overall	1.583	0.072	1.442-1.724

<sup>a</sup>-Standard errors; preliminary estimates.

Table 1.3. Comparison of November 2012 yield projections to final estimates (million pounds).

Sector	Projection	Final	Projection Error (%)
Charter	0.645	0.605	+6.5%
Noncharter	0.761	0.977	-22.2%
Overall	1.405	1.583	-11.2%

Table 1.4. History of Area 2C charter regulations.

Year	Charter Regulations
1995-2005	Two-fish bag limit (no size restrictions), no limit on crew retention.
2006	Two-fish bag limit (no size limit), state EO prohibiting crew harvest 5/26-12/31.
2007	Two-fish bag limit (1 under 32" eff. 6/1), no crew retention 5/1-12/31 (State EO and Federal Rule).
2008	Two-fish bag limit (1 under 32"), except one-fish bag limit Jun 1-10 (halted by injunction).
2009	One fish (no size limit), no harvest by skipper & crew, line limit (effective June 5).
2010	One fish (no size limit), no harvest by skipper & crew, line limit.
2011	One fish with maximum size limit of 37", no harvest by skipper and crew, line limit.
2012	U45"O68" reverse slot limit, no harvest by skipper and crew, line limit.

Table 1.5. Area 2C sport halibut harvest history by sector.

Year	Charter				Non-Charter			Total Sport Harvest		
	No. Fish	Avg. Wt. (lb)	Yield (M lb)	GHL (M lb)	No. Fish	Avg. Wt. (lb)	Yield (M lb)	No. Fish	Avg. Wt. (lb)	Yield (M lb)
1995	49,615	19.9	0.986	No GHL	39,707	19.3	0.765	89,322	19.6	1.751
1996	53,590	22.1	1.187		41,307	22.8	0.943	94,897	22.4	2.129
1997	51,181	20.2	1.034		53,205	21.4	1.139	104,386	20.8	2.172
1998	54,364	29.1	1.584		42,580	21.5	0.917	96,944	25.8	2.501
1999	52,735	17.8	0.939		44,301	20.4	0.904	97,036	19.0	1.843
2000	57,208	19.7	1.130		54,432	20.6	1.121	111,640	20.2	2.251
2001	66,435	18.1	1.202		43,519	16.6	0.721	109,954	17.5	1.923
2002	64,614	19.7	1.275		40,199	20.3	0.814	104,813	19.9	2.090
2003	73,784	19.1	1.412	1.432	45,697	18.5	0.846	119,481	18.9	2.258
2004	84,327	20.7	1.750	1.432	62,989	18.8	1.187	147,316	19.9	2.937
2005	102,206	19.1	1.952	1.432	60,364	14.0	0.845	162,570	17.2	2.798
2006	90,471	19.9	1.804	1.432	50,520	14.3	0.723	140,991	17.9	2.526
2007	109,835	17.5	1.918	1.432	68,498	16.5	1.131	178,333	17.1	3.049
2008	102,965	19.4	1.999	0.931	66,296	19.1	1.265	169,261	19.3	3.264
2009	53,602	23.3	1.249	0.788	65,549	17.3	1.133	119,151	20.0	2.383
2010	41,202	26.4	1.086	0.788	52,896	16.7	0.885	94,098	20.9	1.971
2011	36,545	9.4	0.344	0.788	42,202	16.2	0.685	78,747	13.1	1.029
2012	42,436	14.3	0.605	0.931	54,696	17.9	0.977	97,132	16.3	1.583

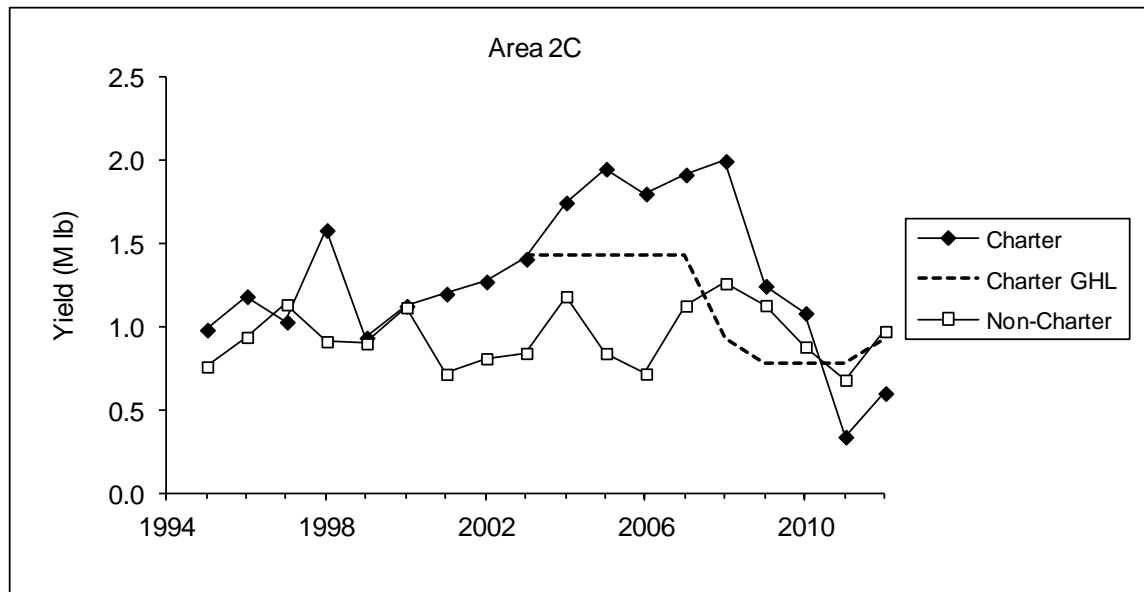


Figure 1.1. Charter and non-charter halibut yield (M lb) and charter Guideline Harvest Level (GHL) in Area 2C since 1995.

## 2. Area 3A Harvest:

Table 2.1. Area 3A sport halibut harvest estimates by sector and subarea, 2012.

Subarea	Charter			Non-Charter		
	Avg. Wt. (lb) <sup>a</sup>	No. Fish <sup>b</sup>	Yield (lb)	Avg. Wt. (lb) <sup>a</sup>	No. Fish <sup>b</sup>	Yield (lb)
Central Cook Inlet	11.8	44,171	521,706	10.8	29,556	318,725
Lower Cook Inlet	11.9	69,734	832,795	10.3	46,525	477,074
Kodiak	13.2	13,007	171,611	14.5	10,138	146,989
North Gulf Coast	12.7	32,727	414,199	11.0	10,787	118,390
Eastern PWS	21.2	5,067	107,491	16.8	7,613	127,786
Western PWS	19.6	4,009	78,763	16.6	8,134	134,970
Yakutat	32.0	4,007	128,389	29.0	606	17,559
Glacier Bay	34.1	860	29,307	--	--	--
Area 3A	13.2	173,582	2,284,261	11.8	113,359	1,341,494

<sup>a</sup>-Average net weight (headed and gutted), rounded to the nearest 0.1 lb.

<sup>b</sup>-Estimated number of fish harvested from the ADF&G Statewide Harvest Survey.

Table 2.2. Approximate 95% confidence intervals for yield estimates (million pounds).

Sector	Estimate	StdErr	Confidence Interval
Charter	2.284	0.087	2.117-2.457
Non-Charter	1.341	0.067	1.212-1.475
Overall	3.626	0.110	3.411-3.841

Table 2.3. Comparison of November 2012 yield projections to final estimates (million pounds).

Sector	Projection	Final	Projection Error (%)
Charter	2.375	2.284	+4.0%
Non-Charter	1.563	1.341	+16.5%
Overall	3.938	3.626	+8.6%

Table 2.4. History of Area 3A charter regulations.

Year	Charter Regulations
1995-2006	Two-fish bag limit (no size limit), no limit on crew retention
2007	Two-fish bag limit (no limit), state EO prohibiting crew harvest 5/1-12/31.
2008	Two-fish bag limit (no limit), state EO prohibiting crew harvest 5/24-9/1.
2009	Two-fish bag limit (no size limit), state EO prohibiting crew harvest 5/23-9/1.
2010-2012	Two-fish bag limit (no size limit), no limit on crew retention

Table 2.5. Area 3A sport halibut harvest history by sector.

Year	Charter				Non-Charter			Total Sport Harvest		
	No. Fish	Avg. Wt. (lb)	Yield (M lb)	GHL (M lb)	No. Fish	Avg. Wt. (lb)	Yield (M lb)	No. Fish	Avg. Wt. (lb)	Yield (M lb)
1995	137,843	20.6	2.845	No GHL	95,206	17.5	1.666	233,049	19.4	4.511
1996	142,957	19.7	2.822		108,812	17.6	1.918	251,769	18.8	4.740
1997	152,856	22.3	3.413		119,510	17.6	2.100	272,366	20.2	5.514
1998	143,368	20.8	2.985		105,876	16.2	1.717	249,244	18.9	4.702
1999	131,726	19.2	2.533		99,498	17.0	1.695	231,224	18.3	4.228
2000	159,609	19.7	3.140		128,427	16.9	2.165	288,036	18.4	5.305
2001	163,349	19.2	3.132		90,249	17.1	1.543	253,598	18.4	4.675
2002	149,608	18.2	2.724		93,240	15.9	1.478	242,848	17.3	4.202
2003	163,629	20.7	3.382	3.650	118,004	17.3	2.046	281,633	19.3	5.427
2004	197,208	18.6	3.668	3.650	134,960	14.4	1.937	332,168	16.9	5.606
2005	206,902	17.8	3.689	3.650	127,086	15.6	1.984	333,988	17.0	5.672
2006	204,115	17.9	3.664	3.650	114,887	14.6	1.674	319,002	16.7	5.337
2007	236,133	16.9	4.002	3.650	166,338	13.7	2.281	402,471	15.6	6.283
2008	198,108	17.0	3.378	3.650	145,286	13.4	1.942	343,394	15.5	5.320
2009	167,599	16.3	2.734	3.650	150,205	13.5	2.023	317,804	15.0	4.758
2010	177,460	15.2	2.698	3.650	124,088	12.8	1.587	301,548	14.2	4.285
2011	184,293	15.2	2.793	3.650	128,464	12.6	1.615	312,757	14.1	4.408
2012	173,582	13.2	2.284	3.103	113,359	11.8	1.341	286,941	12.6	3.626

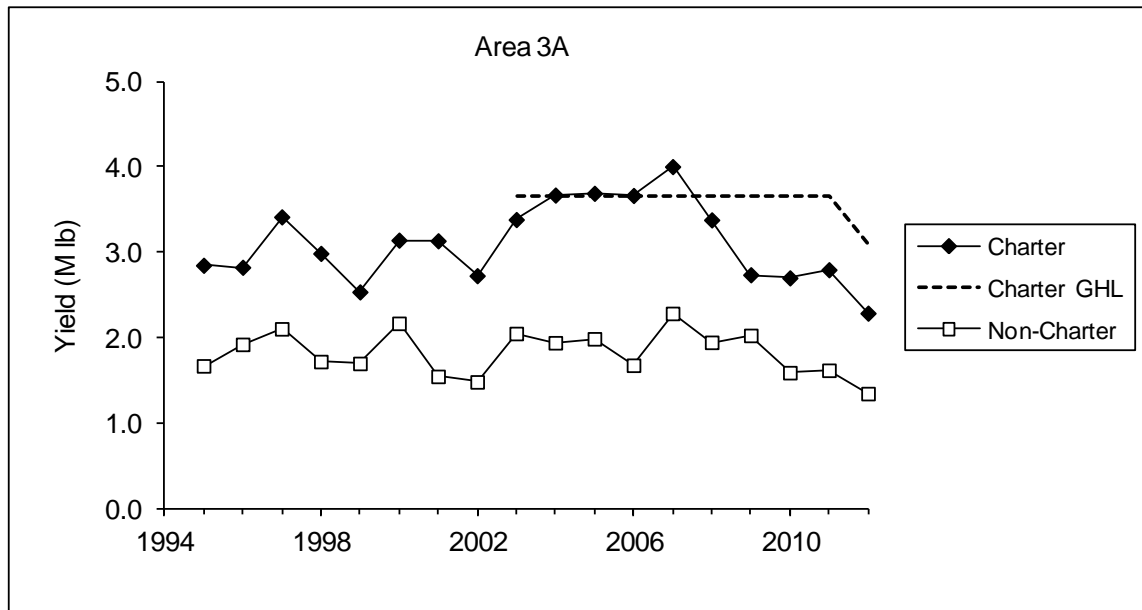


Figure 2.1. Charter and non-charter halibut yield (M lb) and charter Guideline Harvest Level (GHL) in Area 3A since 1995.

### 3. Comparison of Logbook and Statewide Harvest Survey Estimates

Table 3.1. Comparison of estimates of charter halibut harvest biomass (yield) based on numbers of fish from logbooks and estimated via the ADF&G Statewide Harvest Survey (SWHS), 2006-2012. Logbook numbers include harvest by clients, comps, and crew.

Area	Year	Logbook		Statewide Harvest Survey	
		Yield (M lb)	StdErr <sup>a</sup>	Yield (M lb)	StdErr
2C	2006	2.063	0.052	1.804	0.089
	2007	2.015	0.028	1.918	0.085
	2008	1.974	0.025	1.999	0.099
	2009	1.187	0.022	1.249	0.071
	2010	1.249	0.040	1.086	0.077
	2011	0.452	0.005	0.344	0.015
	2012	0.728	0.025	0.605	0.034
3A	2006	4.689	0.072	3.664	0.108
	2007	4.229	0.059	4.002	0.120
	2008	3.865	0.063	3.378	0.142
	2009	3.044	0.055	2.734	0.133
	2010	3.238	0.123	2.698	0.116
	2011	3.308	0.133	2.793	0.128
	2012	2.802	0.087	2.284	0.086

<sup>a</sup>-Standard errors for Area 2C are preliminary.

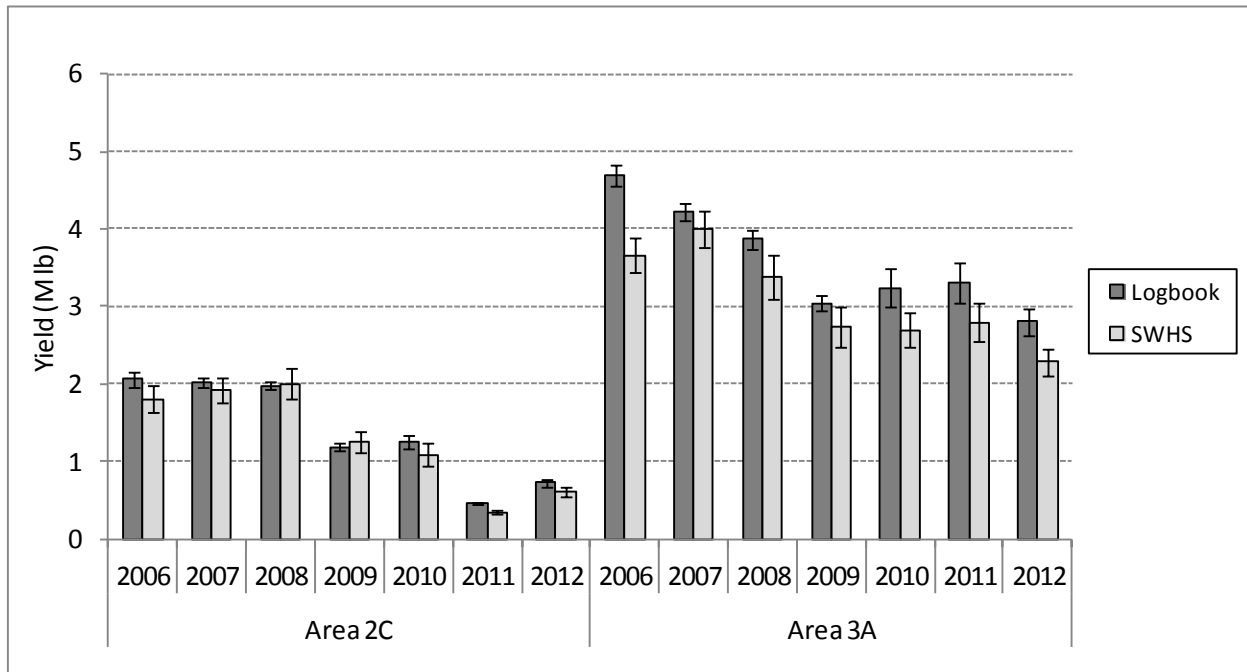


Figure 3.1. Comparison of logbook- and SWHS-based estimates of charter halibut yield in Areas 2C and 3A (with approx 95% confidence intervals).