

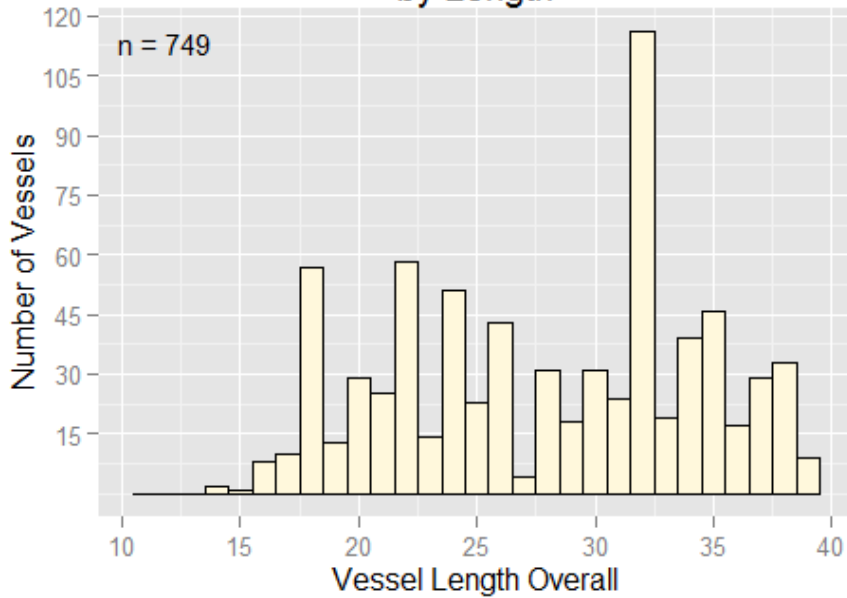
2013-2015 Under 40' Fixed Gear Fleet Profile

- Under 40' profiles** Goal: generate base-line profile of the under 40' fixed gear fleet, and identify vessel characteristics such as length or number of trips per year which can be used to stratify under 40' fleet for cost effective at-sea monitoring pilot work.

Source: NMFS Catch Accounting System(CAS)

1.1.a. Histograms of the number of vessels vs. size for the under 40' fleet

**Figure 1. Fixed Gear Vessels <40' in 2013-2015
by Length**



**Figure 2. Fixed Gear Vessels <40' in 2013-2015
by Area, Year, and Length**

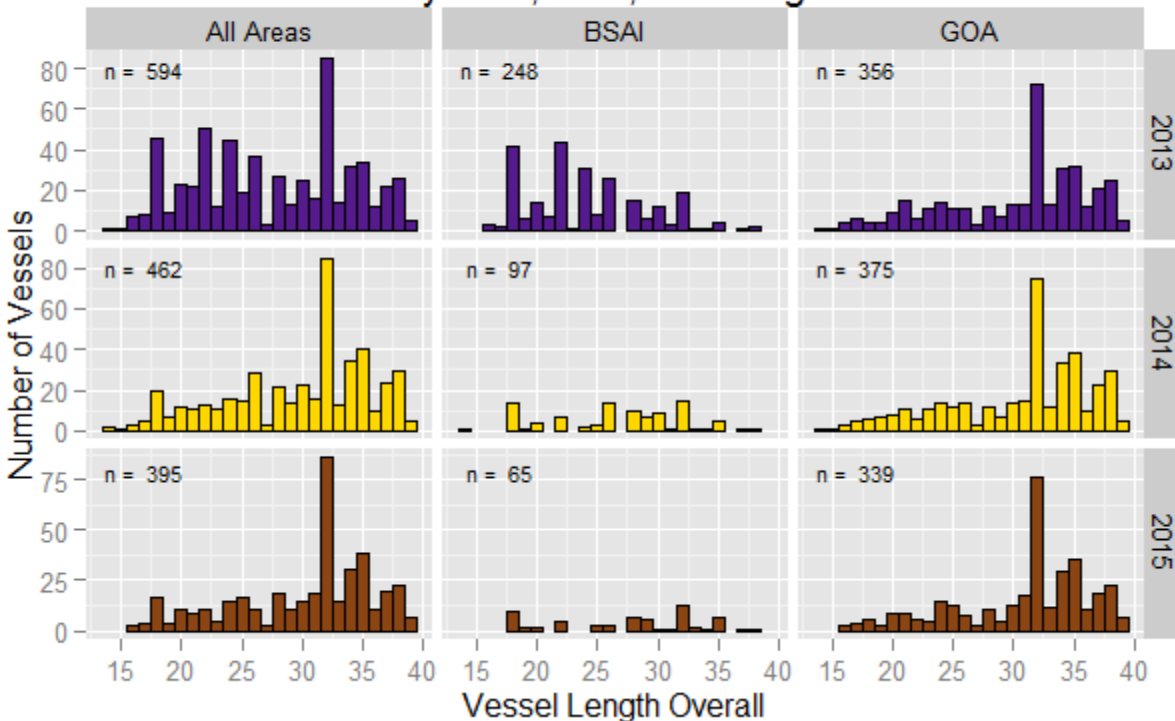


Figure 3. Fixed Gear Vessels <40' in 2013-2015 by Area, Gear, and Length

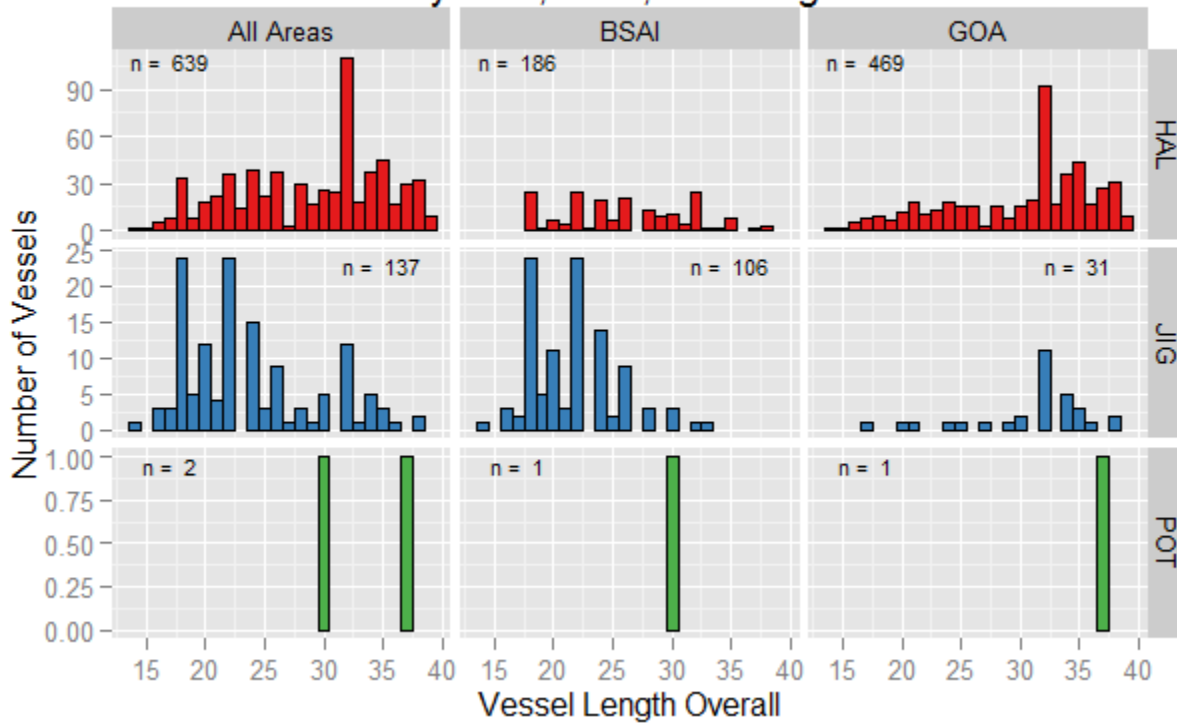
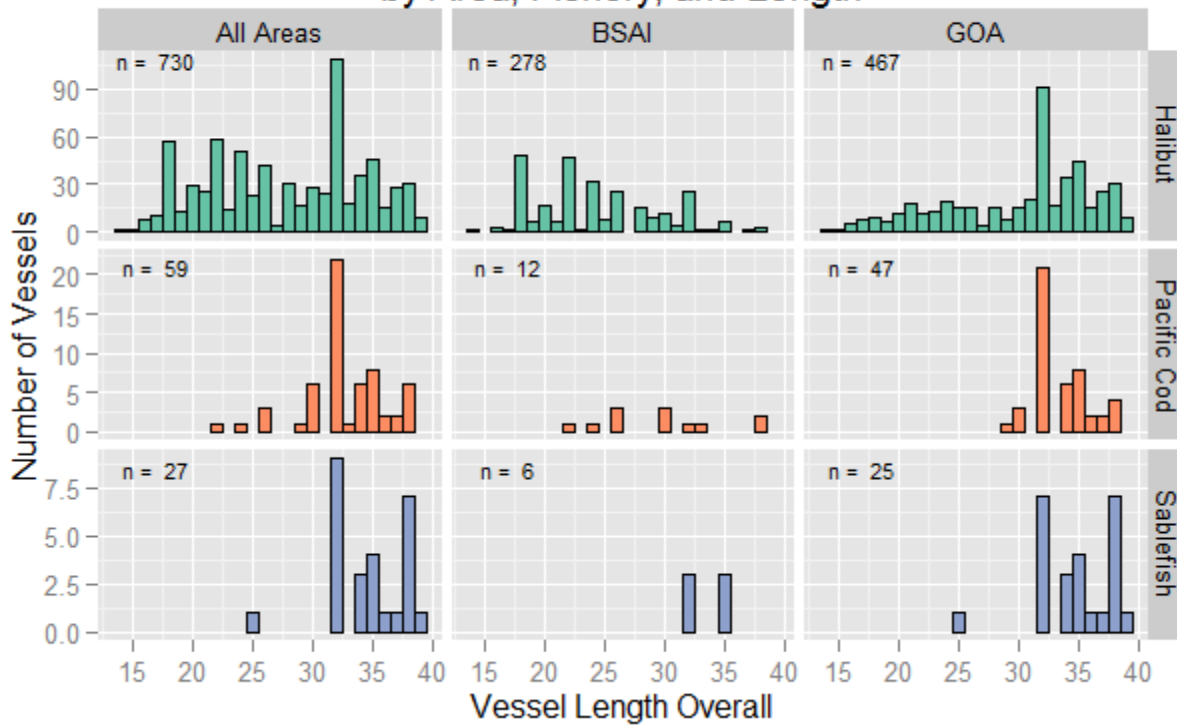


Figure 4. Fixed Gear Vessels <40' in 2013-2015 by Area, Fishery, and Length



Note: Fishery is based on the trip target identified in CAS.

1.1.b. Histograms of the number of vessels vs. size for the fixed gear fleet

Figure 5. Fixed Gear Vessels by Length Category, 2013-2015

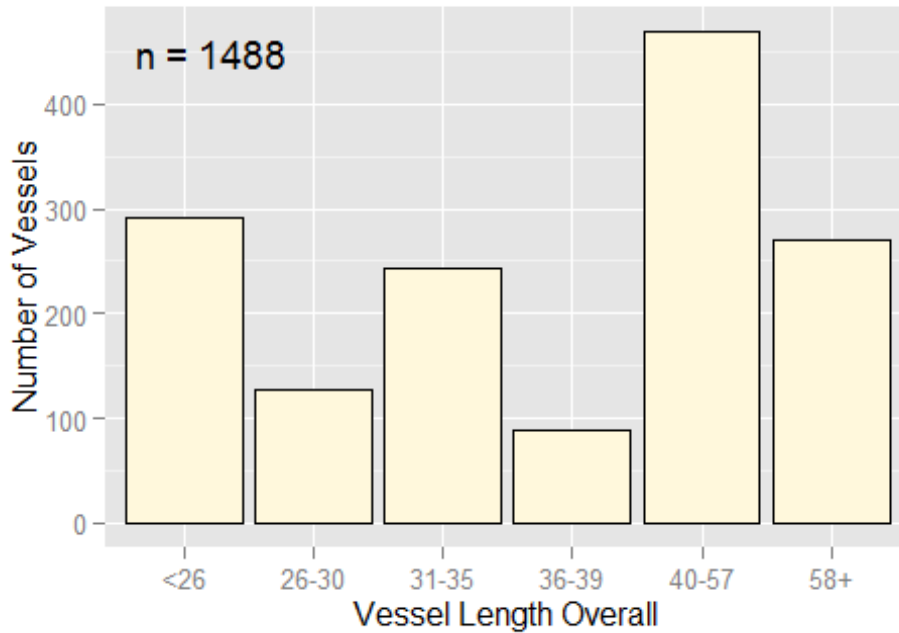


Figure 6. Fixed Gear Vessels in 2013-2015 by Area, Year, and Length

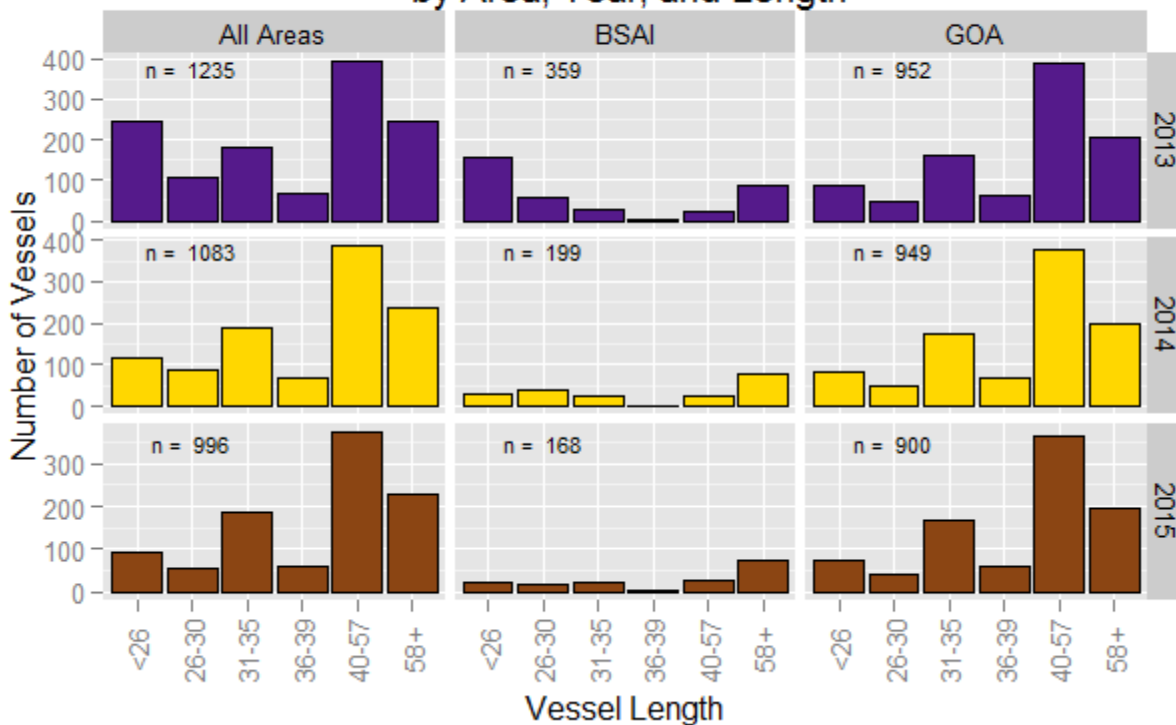


Figure 7. Fixed Gear Vessels in 2013-2015
by Area, Gear, and Length Category

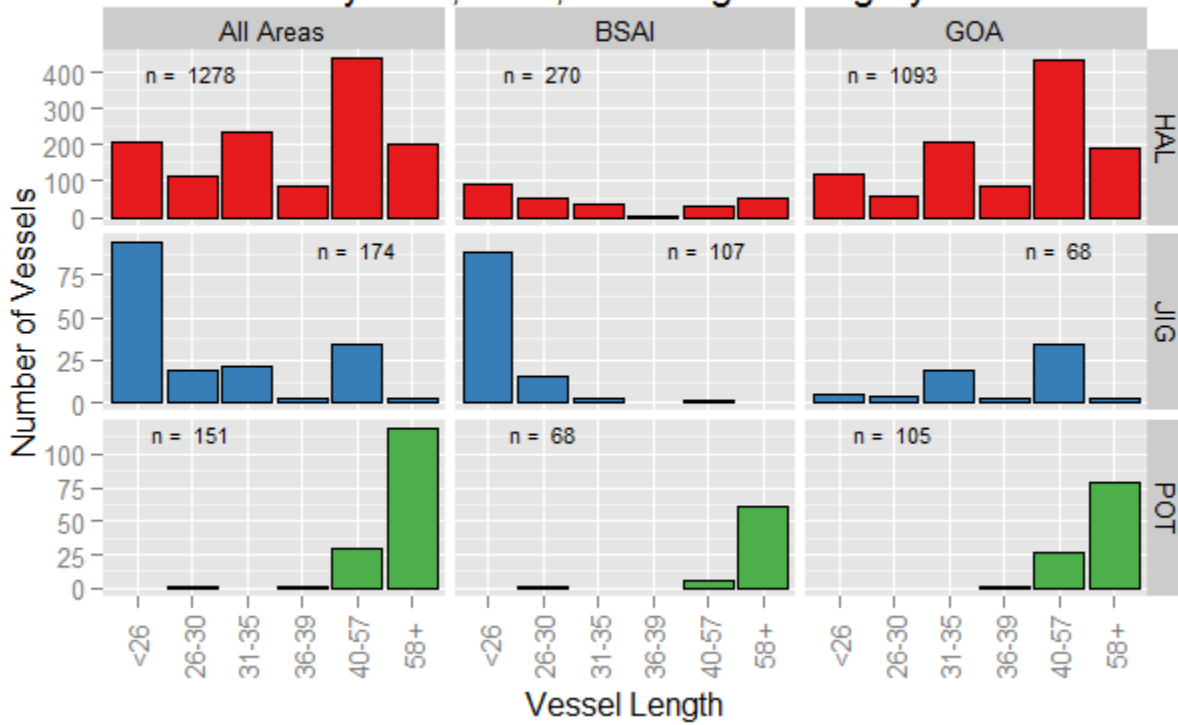
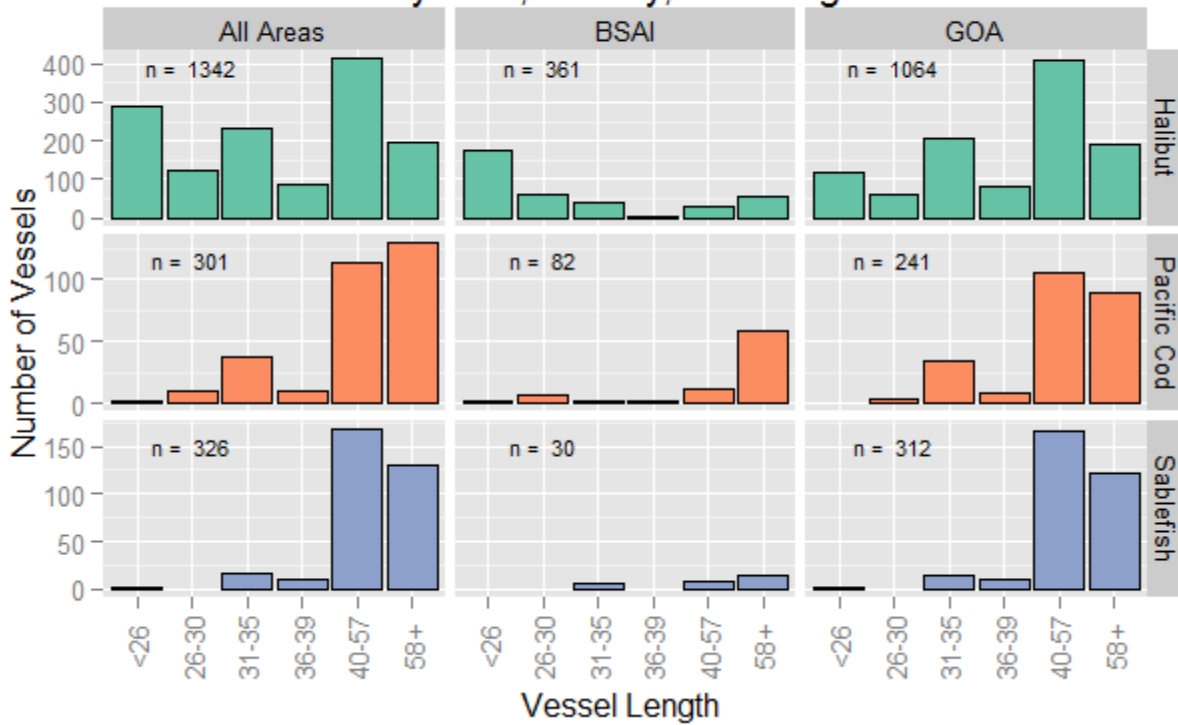


Figure 8. Fixed Gear Vessels in 2013-2015
by Area, Fishery, and Length



Note: Fishery is based on the trip target identified in CAS.

1.2. Vessel size vs. landed weight Evaluate % of landed weight by fishery (sablefish, halibut, P.cod) associated with the following size groupings: less than 26'LOA; 26'-30'; 30'-35'; 35'-39'; 40'to 57.5'; and 58+. *Note: Fishery is based on the trip target identified in CAS.*

Halibut Fishery

Table 1. Percent of the Total Retained Catch of All Species in the 2015 Halibut Fishery, by Gear

Gear	Retained Catch		Vessel
	Metric Tons	Percent	Count
HAL	10,680	99.9 %	868
JIG	7	0.1 %	7
ALL	10,687	100.0%	875

Table 2. Percent of the Total Retained Catch of All Species in the 2015 Hook-and-Line Halibut Fishery, by Area and Vessel Length

Gear	Area	Vessel Length	Retained Catch		Vessel
			Metric Tons	Percent	Count
HAL	All Areas	<26	151	1.4 %	92
		26-30	196	1.8 %	56
		31-35	1,258	11.8 %	175
		36-39	205	1.9 %	57
		40-57	3,982	37.3 %	320
		58+	4,888	45.8 %	168
		ALL	10,680	100.0%	868
		BSAI	<26	48	2.6 %
	26-30		79	4.2 %	17
	31-39*		219	11.7 %	24
	40-57		540	28.8 %	25
	58+		988	52.7 %	41
	ALL		1,874	100.0%	129
	GOA	<26	103	1.2 %	71
		26-30	117	1.3 %	39
		31-39*	1,245	14.2 %	215
		40-57	3,441	39.1 %	311
		58+	3,899	44.3 %	162
ALL		8,806	100.0%	798	

* In order to maintain confidentiality, the 31-35' vessel length category has been combined with the 36-39' vessel length category.

Pacific Cod Fishery

Table 3. Percent of the Total Retained Catch of All Species in the 2015 Fixed Gear Pacific Cod Fishery, by Gear

Gear	Retained Catch		Vessel
	Metric Tons	Percent	Count
HAL	7,571	15.9 %	75
JIG	215	0.5 %	22
POT	39,816	83.6 %	108
ALL	47,602	100.0%	203

Table 4. Percent of the Total Retained Catch of All Species in the 2015 Pacific Cod Fishery, by Area and Vessel Length

Gear	Area	Vessel Length	Retained Catch		Vessel
			Metric Tons	Percent	Count
HAL	All Areas	26-35*	1,248	16.5 %	15
		36-39	311	4.1 %	4
		40-58+**	6,012	79.4 %	56
		ALL	7,571	100.0%	75
	BSAI	40-58+**	625	100.0%	4
		ALL	625	100.0%	4
	GOA	26-35*	1,248	18 %	15
		36-39	311	4.5 %	4
		40-57	4,899	70.5 %	47
		58+	488	7 %	5
	ALL	6,947	100.0%	71	
	POT	All Areas	36-57***	3,599	9 %
58+			36,217	91 %	89
ALL			39,816	100.0%	108
BSAI		40-57	1,182	5.5 %	3
		58+	20,368	94.5 %	40
		ALL	21,550	100.0%	43
GOA	36-57***	2,417	13.3 %	16	
	58+	15,849	86.8 %	59	
	ALL	18,265	100.0%	75	

* In order to maintain confidentiality, the 26-30' vessel length category has been combined with the 31-35' vessel length category.

** In order to maintain confidentiality, the 40-57' vessel length category has been combined with the 58'+ vessel length category.

*** In order to maintain confidentiality, the 36-39' vessel length category has been combined with the 40-57' vessel length category.

Sablefish Fishery

Table 5. Percent of the Total Retained Catch of All Species in the 2015 Fixed Gear Sablefish Fishery, by Gear

Gear	Retained Catch		Vessel
	Metric Tons	Percent	Count
HAL	9,582	98.8 %	260
POT	120	1.2 %	3
ALL	9,702	100.0%	263

Table 6. Percent of the Total Retained Catch of All Species in the 2015 Fixed Gear Sablefish Fishery, by Area and Vessel Length

Gear	Area	Vessel Length	Retained Catch		Vessel Count	
			Metric Tons	Percent		
HAL	All Areas	<26, 31-35*	127	1.3 %	11	
		36-39	108	1.1 %	5	
		40-57	3,125	32.6 %	135	
		58+	6,222	64.9 %	109	
		ALL	9,582	100.0%	260	
	BSAI	31-35	32	9.2 %	4	
		40-57	141	40 %	5	
		58+	179	50.8 %	3	
		ALL	352	100.0%	12	
	GOA	<26, 31-35*	95	1 %	11	
		36-39	108	1.2 %	5	
		40-57	2,985	32.3 %	133	
		58+	6,043	65.5 %	106	
		ALL	9,230	100.0%	255	
	POT	All Areas	58+	120	100.0%	3
			ALL	120	100.0%	3
BSAI		58+	120	100.0%	3	
		ALL	120	100.0%	3	

* In order to maintain confidentiality, the <26' vessel length category has been combined with the 31-35' vessel length category.

1.3. Histogram of Number of Trips by size grouping less than 26'LOA; 26'-30'; 30'-35'; 35'-39'; 40'to 57.5'; and 58+.

Figure 9. Number and Proportion of Trips by Area and Vessel Length Category for 2015 Fixed Gear Vessels

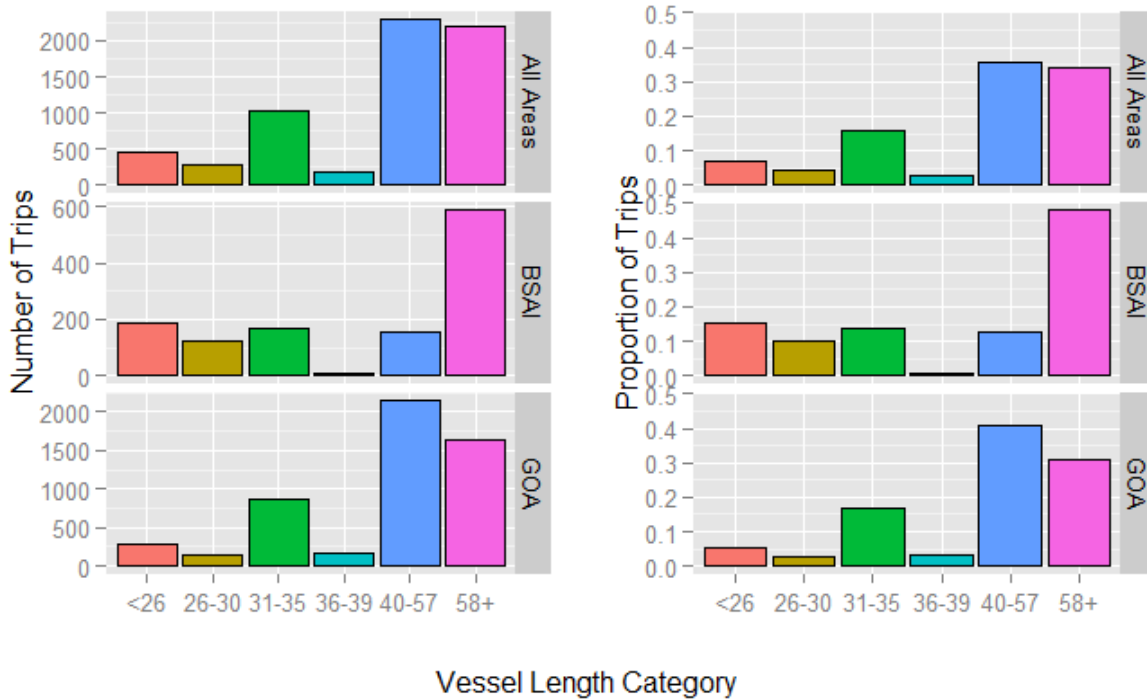


Figure 10. Number and Proportion of Trips by Gear and Vessel Length Category for 2015 Fixed Gear Vessels

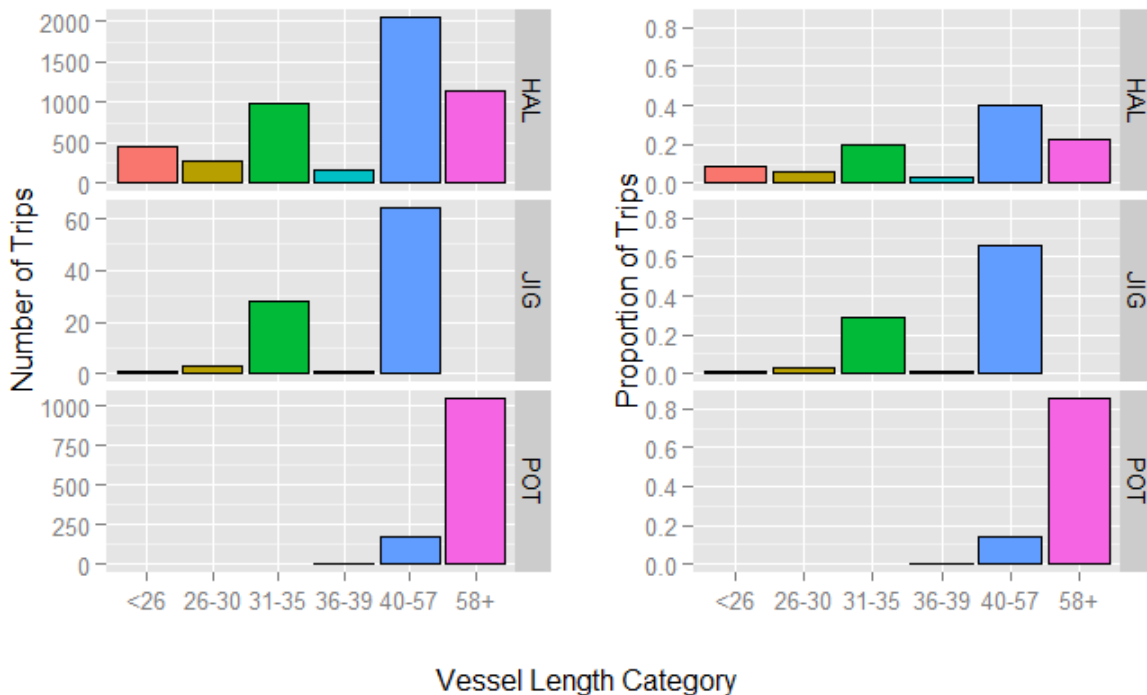


Figure 11. Number and Proportion of Trips by Fishery and Vessel Length Category for 2015 Fixed Gear Vessels

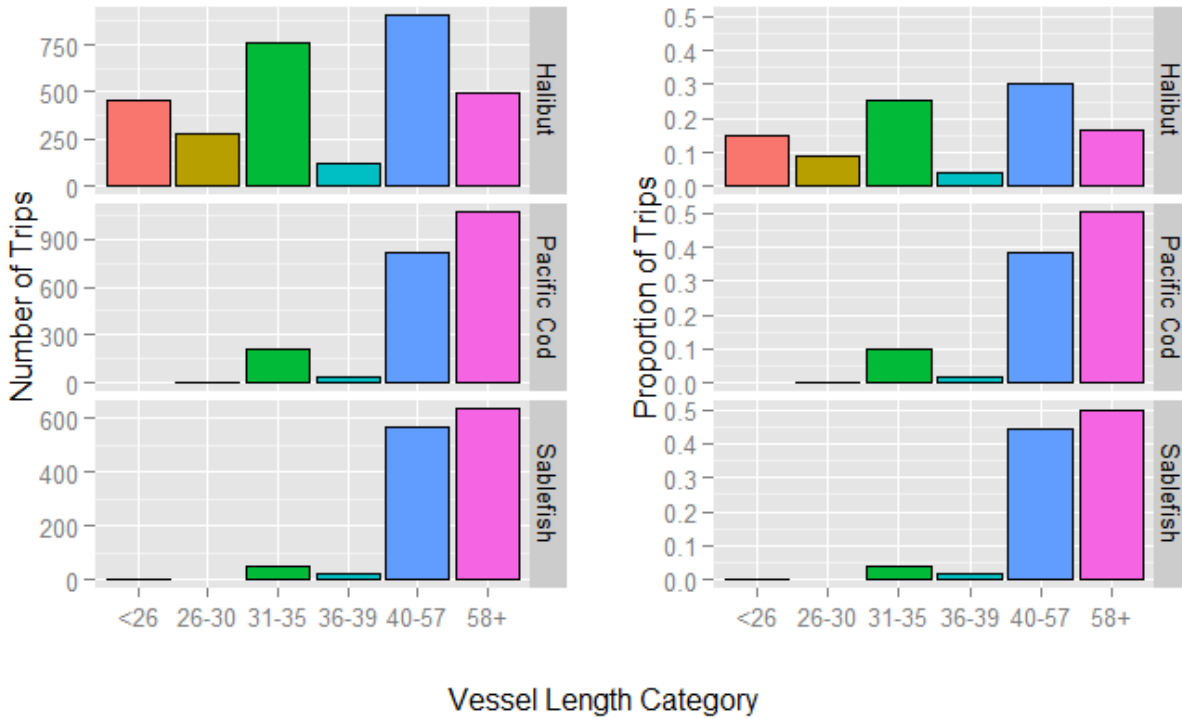


Figure 12. Number of Trips per Year by Vessel for Fixed Gear Vessels <40' LOA in 2013-2015

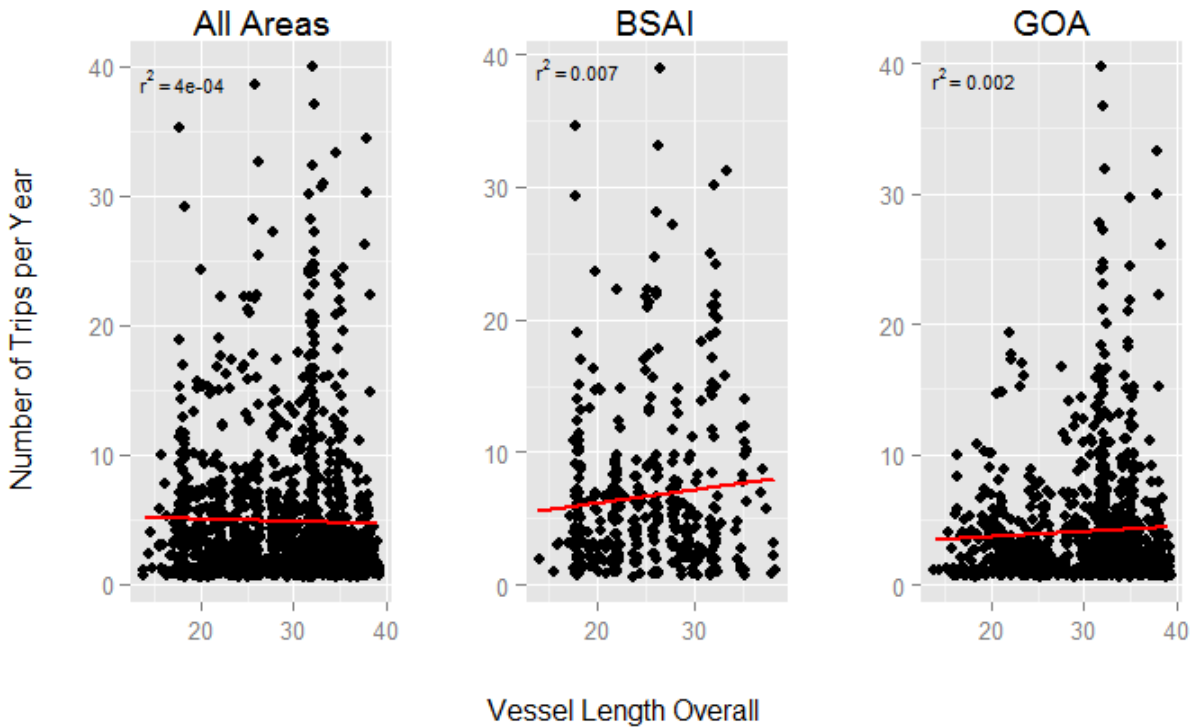


Figure 13. Number of Trips per Year by Vessel
for Fixed Gear Vessels in 2013-2015

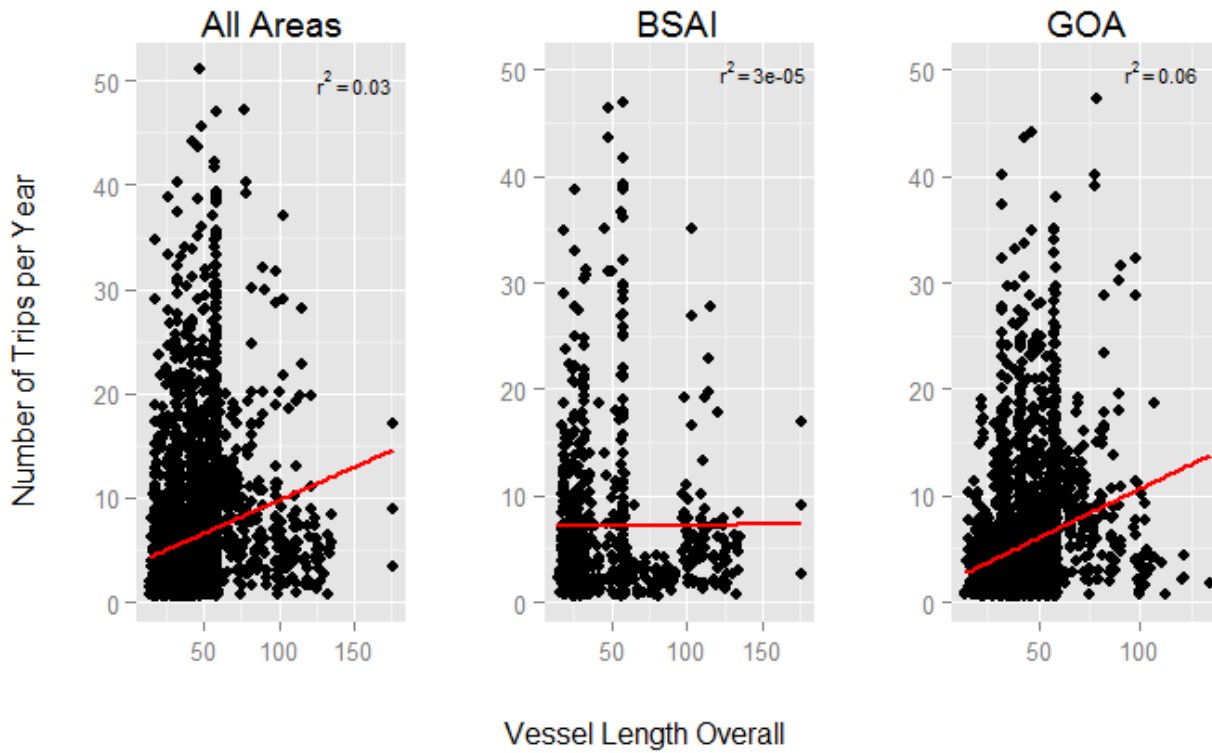


Table 7. Average Trip Length in Days for Fixed Gear Vessels,
by Vessel Length and Year in 2013-2015

Vessel Length	Average Days per Trip		
	2013	2014	2015
<26	1.7	2.0	2.2
26-30	1.8	2.0	2.2
31-35	3.2	3.2	3.1
36-39	3.7	3.8	3.9
40-57	4.1	3.9	4.0
58+	5.2	4.7	4.6

Note: Trip length is defined as the difference between the fishing start date and landing date (or first landing date in the event of partial deliveries) plus 1.

Table 8. Average Trip Length in Days for Fixed Gear Vessels, by Vessel Length and Area in 2013-2015

Vessel Length	Average Days per Trip		
	All Areas	BSAI	GOA
<26	1.9	1.7	2.3
26-30	2.0	1.6	2.5
31-35	3.2	2.5	3.4
36-39	3.8	3.7	3.8
40-57	4.0	5.2	3.9
58+	4.9	5.1	4.8

Note: Trip length is defined as the difference between the fishing start date and landing date (or first landing date in the event of partial deliveries) plus 1.

Table 9. Average Trip Length in Days for Fixed Gear Vessels, by Vessel Length and Gear in 2013-2015

Vessel Length	Average Days per Trip		
	HAL	JIG	POT
<26	2.0	1.5	NA
26-30	2.0	1.6	3.0
31-35	3.2	2.9	NA
36-39	3.8	2.3	2.6
40-57	4.2	3.1	2.5
58+	5.9	4.5	3.5

Note: Trip length is defined as the difference between the fishing start date and landing date (or first landing date in the event of partial deliveries) plus 1.

Table 10. Average Trip Length in Days for Fixed Gear Vessels, by Vessel Length and Fishery in 2013-2015

Vessel Length	Average Days per Trip		
	Halibut	Pacific Cod	Sablefish
<26	1.9	1.5	1.3
26-30	2.0	1.7	NA
31-35	3.1	3.2	5.0
36-39	3.6	3.2	5.6
40-57	4.4	3.2	4.5
58+	6.1	3.4	6.1

Note: Trip length is defined as the difference between the fishing start date and landing date (or first landing date in the event of partial deliveries) plus 1.

1.4. Number of trips per vessel vs. landed weight evaluate percent of landed weight by vessels taking two or less trips/year, 3-5 trips/year, and greater than 6 trips/year, in total, associated with the following size groupings: less than 26'LOA; 26'-30'; 30'-35'; 35'-39'; 40'to 57.5'; and 58+.

Figure 14. Number of Fixed Gear Vessels in 2015 by Vessel Length, Area, and Number of Trips per Year

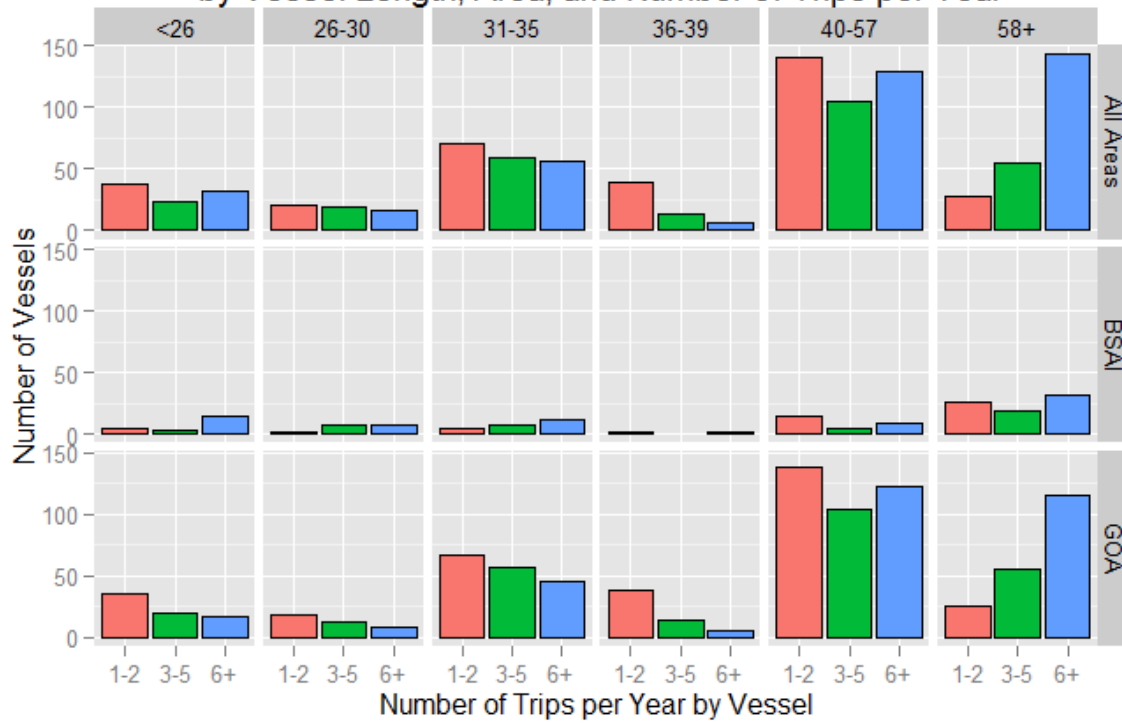


Figure 15. Number of Fixed Gear Vessels in 2015 by Vessel Length, Gear, and Number of Trips per Year

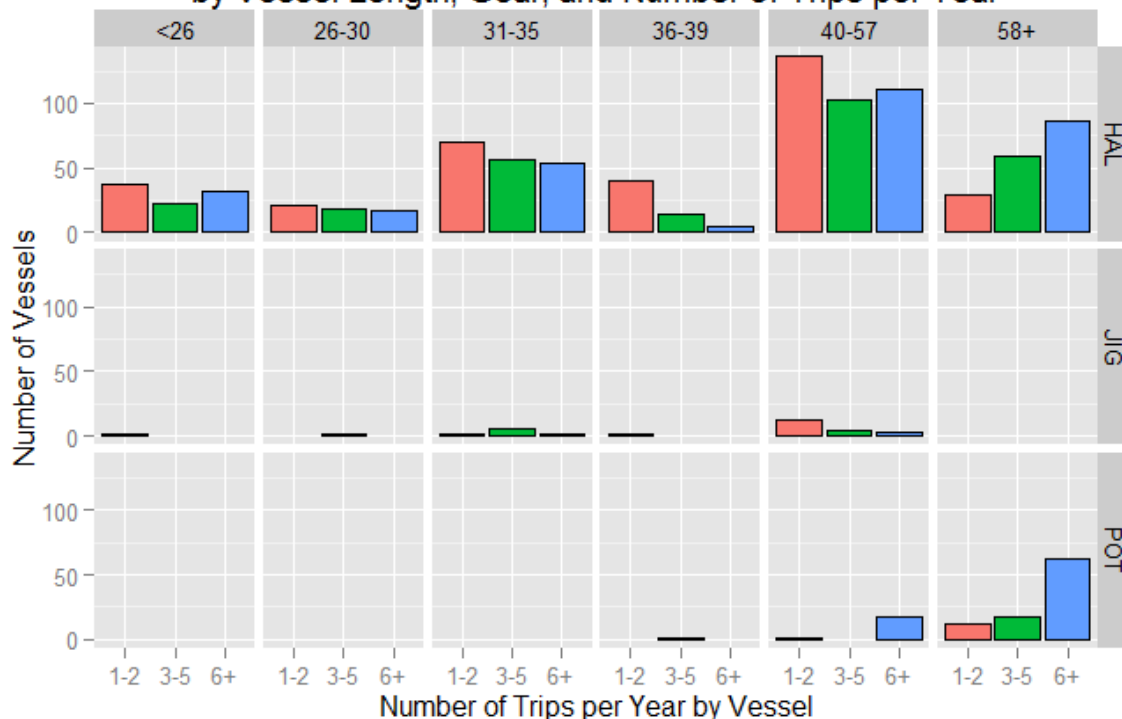
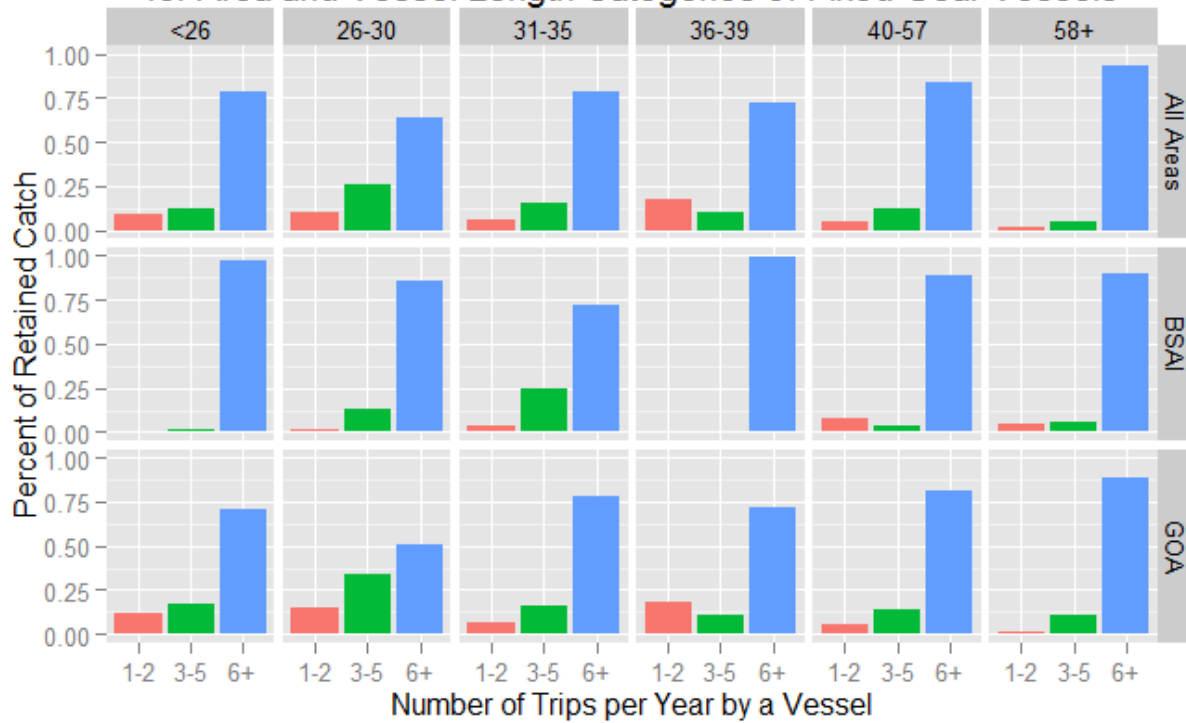


Figure 16. Percent of Retained Catch in 2015
by Vessels based on their Number of Trips per Year
for Area and Vessel Length Categories of Fixed Gear Vessels



1.5. Primary Ports Identify primary landing ports associated with top 2 quartiles of under 40' fleet by the following criteria: vessel size, landed weight, and # of trips.

Table 11. Top 10 Ports per Vessel Length Category across 2013-2015 based on the Number of Landings by Fixed Gear Vessels in the Vessel Length Category

Years	Vessel Length	Port	Landing Count	Vessel Count
2013-2015	<26	Savoonga	418	20
2013-2015	<26	Sitka	224	39
2013-2015	<26	Yakutat	220	11
2013-2015	<26	Tununak	145	31
2013-2015	<26	St. Paul	141	6
2013-2015	<26	Other Alaska	88	24
2013-2015	<26	Toksook Bay	79	21
2013-2015	<26	Petersburg	78	11
2013-2015	<26	Kodiak	74	16
2013-2015	<26	Atka	74	5
2013-2015	26-30	St. Paul	286	6
2013-2015	26-30	Other Alaska	214	27
2013-2015	26-30	Petersburg	144	8
2013-2015	26-30	Togiak	118	12
2013-2015	26-30	Wrangell	84	11
2013-2015	26-30	Kodiak	51	5
2013-2015	26-30	Sitka	47	10
2013-2015	26-30	Yakutat	38	4
2013-2015	26-30	Homer	36	5
2013-2015	26-30	Mekoryuk	31	12
2013-2015	31-35	Kodiak	797	52
2013-2015	31-35	St. Paul	457	10
2013-2015	31-35	Homer	336	44
2013-2015	31-35	Yakutat	218	7
2013-2015	31-35	Petersburg	180	25
2013-2015	31-35	Sitka	179	20
2013-2015	31-35	Juneau Borough	144	22
2013-2015	31-35	Cordova	105	22
2013-2015	31-35	Hoonah	103	22
2013-2015	31-35	Akutan, Akutan Bay	84	10

(cont'd)

Table 11 (cont'd). Top 10 Ports per Vessel Length Category across 2013-2015 based on the Number of Landings by Fixed Gear Vessels in the Vessel Length Category

Years	Vessel Length	Port	Landing Count	Vessel Count
2013-2015	36-39	Kodiak	153	11
2013-2015	36-39	Sitka	61	11
2013-2015	36-39	Sand Point	47	6
2013-2015	36-39	Homer	42	5
2013-2015	36-39	Ketchikan	36	7
2013-2015	36-39	Wrangell	32	9
2013-2015	36-39	Cordova	29	6
2013-2015	36-39	Juneau Borough	24	9
2013-2015	36-39	Petersburg	23	7
2013-2015	36-39	Hoonah	23	6
2013-2015	40-57	Kodiak	1,498	112
2013-2015	40-57	Sitka	1,053	101
2013-2015	40-57	Seward	767	78
2013-2015	40-57	Homer	578	81
2013-2015	40-57	Sand Point	418	51
2013-2015	40-57	Juneau Borough	407	66
2013-2015	40-57	Dutch Harbor/ Unalaska	374	26
2013-2015	40-57	Petersburg	322	56
2013-2015	40-57	King Cove	297	21
2013-2015	40-57	Wrangell	155	40
2013-2015	58+	Kodiak	1,766	111
2013-2015	58+	Dutch Harbor/ Unalaska	1,086	83
2013-2015	58+	Sand Point	705	67
2013-2015	58+	Seward	680	87
2013-2015	58+	Akutan, Akutan Bay	597	54
2013-2015	58+	Homer	350	66
2013-2015	58+	King Cove	281	41
2013-2015	58+	Sitka	278	44
2013-2015	58+	Petersburg	220	35
2013-2015	58+	Yakutat	201	54

Note: Other Alaska reflects Alaska landing locations that do not have a location code or port code or are a tender delivery outside of a port with an existing port code.

Table 12. Top 10 Ports for the Trips per Year per Vessel Category in 2013-2015 based on the Number of Landings by Fixed Gear Vessels in the Trips per Year by a Vessel Category

Years	Trips per Year per Vessel	Port	Landing Count	Vessel Count
2013-2015	1-2	Sitka	112	51
2013-2015	1-2	Petersburg	83	35
2013-2015	1-2	Wrangell	70	28
2013-2015	1-2	Kodiak	65	31
2013-2015	1-2	Hoonah	61	24
2013-2015	1-2	Homer	60	26
2013-2015	1-2	Juneau Borough	53	23
2013-2015	1-2	Cordova	48	20
2013-2015	1-2	Ketchikan	39	14
2013-2015	1-2	Other Alaska	33	21
2013-2015	3-5	Sitka	223	41
2013-2015	3-5	Kodiak	171	37
2013-2015	3-5	Juneau Borough	134	24
2013-2015	3-5	Wrangell	117	18
2013-2015	3-5	Homer	111	22
2013-2015	3-5	Other Alaska	87	22
2013-2015	3-5	Petersburg	87	18
2013-2015	3-5	Hoonah	85	18
2013-2015	3-5	Togiak	78	12
2013-2015	3-5	Yakutat	64	13
2013-2015	6+	St. Paul	891	21
2013-2015	6+	Kodiak	839	36
2013-2015	6+	Yakutat	393	13
2013-2015	6+	Savoonga	389	18
2013-2015	6+	Homer	259	25
2013-2015	6+	Petersburg	255	14
2013-2015	6+	Other Alaska	194	27
2013-2015	6+	Sitka	176	15
2013-2015	6+	Atka	123	5
2013-2015	6+	Tununak	105	16

Note: Other Alaska reflects Alaska landing locations that do not have a location code or port code or are a tender delivery outside of a port with an existing port code.