

# **Year end Report of The FCA Offshore Rockfish Cooperative**

**Submitted to:**

**Regional Administrator  
NMFS Alaska  
P.O. Box 21668  
Juneau, Alaska 99802**

# TABLE OF CONTENTS

	Page
I. INTRODUCTION .....	3
II. COOPERATIVE MEMBERSHIP .....	4
III. COOPERATIVE MANAGEMENT – MONITORING .....	4
IV. CO-OP ALLOCATIONS, TRANSFERS AND PERFORMANCE .....	6
V. WESTERN GULF OF ALASKA (WGOA) SIDEBOARDS .....	7
VI. CO-OP PROHIBITED SPECIES CATCH .....	7
VII. PROGRAM SIDEBOARDS .....	7
VIII. PENALTIES/CIVIL ACTIONS .....	7

## **Section I**

### **INTRODUCTION**

The Council adopted the proposed Central GOA Rockfish Program on June 14, 2010, to replace the Pilot Program, which expired on December 31, 2011. The final rule implementing Amendment 88, the Rockfish Program, became effective on December 27, 2011. The CGOA Rockfish Program is similar to the Pilot Program, but does incorporate some changes, such as:

1. Uses different qualifying years for eligibility for QS.
2. Uses a different suite of years to determine sideboard limits and the allocation of QS

The CGOA Rockfish Program takes over the management of three primary rockfish species in the Central Gulf of Alaska (CGOA): Pacific ocean perch (POPA), northern rockfish (NORK), and dusky rockfish (DUSK). The CGOA Rockfish Program also allows for the formation of rockfish fishing cooperatives in the catcher vessel (CV) and catcher-processor (CP) sectors.

During the 2017 fishing season FCA Cooperative performed quota transfers with the Gulf of Alaska Rockfish Best Use Cooperative.

Each cooperative received an annual harvest share allocation based on the qualified harvest history of its members (combined vessel quota shares or QS). In addition to the allocation of primary rockfish species (POPA, NORK, and DUSK), catcher processor cooperatives also received allocations of secondary species, which included sablefish, thornyhead, shortraker, roughey rockfish and halibut PSC mortality. The catcher processor (CP) vessel co-ops did not receive allocations of Pacific cod. The CP cod was managed as a maximum retainable amount (MRA). Allocations to both the inshore and catcher processor sectors were based on the average percentages of retained catch and halibut PSC mortality usage of these species in the target rockfish fisheries during the qualifying period. These allocations are distributed to the cooperative members based on the amount of primary rockfish that the cooperative member held.

2017 marks the sixth year of the CGOA Rockfish Program, and in compliance with Amendment 88, this annual report is submitted to the Council as a summary of harvests, transfers, and cooperative performance during the 2017 rockfish fishing season in the Central Gulf of Alaska (CGOA).

## **Section II**

### **COOPERATIVE MEMBERSHIP**

The 2017 FCA Cooperative consisted of five members, Alaska Spirit, Alaska Victory, Seafisher, Araho, and one American Seafoods LLP; the Alaska Spirit and Alaska Victory actively fished in the Rockfish Program.

## **Section III**

### **COOPERATIVE MANAGEMENT- MONITORING**

The FCA Cooperative was represented and managed by Bill McGill of The Fishing Company of Alaska, Inc. in cooperation and coordination with the other offshore cooperative, Gulf of Alaska Rockfish Best Use Cooperative, inshore participants, and the National Marine Fisheries Service (in-season management).

It was the 2017 FCA Cooperative harvesting strategy to manage the harvesting in the central GOA utilizing the Alaska Spirit and Alaska Victory to take the quota.

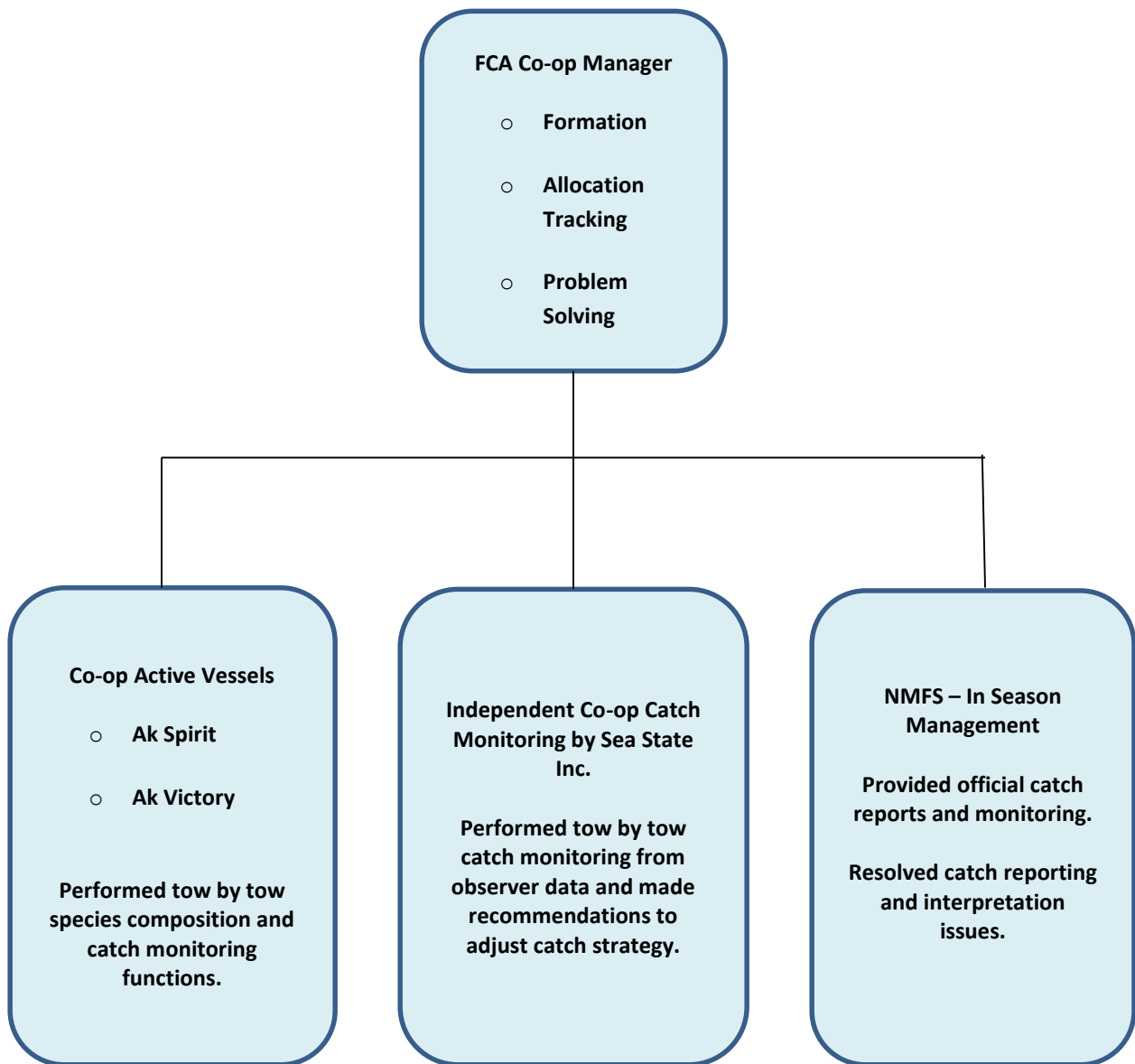
Based on our fishing experience in the GOA cooperative programs, FCA Cooperative developed an effective catch monitoring program and employed fishing techniques that were intended to maximize harvest and minimize PSC bycatch in the CGOA without exceeding any species or PSC allocations.

#### **Vessel Catch-Monitoring**

All of the FCA Cooperative vessels use onboard catch monitoring systems that allow them to compute and monitor catch on a tow by tow basis based on real time hail estimates, species composition, and observer information. Each vessel's accounting is compared to catch reports compiled by an independent catch monitoring company, Sea State, Inc., who utilized the most current official NMFS observer catch information. The comparative data was then transmitted to the vessels. Any discrepancies between vessel catch data and that compiled by Sea State were rectified.

In addition, a third check of catch data accuracy was made when the co-op manager compared the vessel and Sea State catch numbers with the NMFS account balance.

Figure 1. Schematic of Fishing Co. of Alaska Rockfish Cooperative Operations and Management.



## Section IV CO-OP ALLOCATIONS, TRANSFERS and PERFORMANCE

FCA Cooperative allocations and transfers for the 2017 season are summarized by species in Table 1.

**Table 1 Central Gulf of Alaska Allocations and Transfers IN and OUT of Cooperative by Species.**

NAME	FCA Allocation	Transferred In from or Out to the coop listed	In Transfers	Out Transfers	Total QS	Catch	CQ Remaining	Percent Harvested
CGOA Dusky (PSR)	469.400	Gulf of Alaska Best Use Cooperative	6.500	0	475.900	466.555	9.345	98.036%
CGOA Northern	637.443	Gulf of Alaska Best Use Cooperative	0	20.585	616.858	559.355	57.503	90.678%
CGOA POP	3,917.709		0	0	3,917.709	3,899.714	17.995	99.541%
CGOA Rougheye	242.401	Gulf of Alaska Best Use Cooperative	0	53.790	188.611	77.546	111.065	41.114%
CGOA Sablefish	92.407	Gulf of Alaska Best Use Cooperative	0	12.712	79.695	76.006	3.689	95.371%
CGOA Shortraker	70.220	Gulf of Alaska Best Use Cooperative	0	7.256	62.964	42.498	20.466	67.496%
CGOA Thornyhead	152.700	Gulf of Alaska Best Use Cooperative	0	39.026	113.674	96.765	16.909	85.125%
CGOA Halibut - PSC	43.217	Gulf of Alaska Best Use Cooperative	0	2.572	40.645	29.051	11.594	71.475%
GOA DW Complex Halibut SB	14.381		0	0	14.381	0	14.381	0%
GOA SW Complex Halibut SB	0		0	0	0	0	0	0%

**63 Chinook salmon and 49 non-chinook were taken during the 2017 Rockfish Program fishery.**

**Section V**  
**WESTERN GULF OF ALASKA (WGOA) SIDEBOARDS**

**Table 2 Western GOA Sideboard Species**

Species Group	Area	Sideboard Percentage	Total CP Sideboard Limit (mt)	FCA Co-op Sideboard Limit (mt)	FCA Catch (mt)	FCA Balance (mt)	FCA % Remaining
Northern Rockfish	WG	94.62	321	303.701	0	303.701	100%
Pacific Ocean Perch	WG	73.35	1,356	994.286	0	994.286	100%
Dusky (PSR)	WG	95.40	114	108.975	0	108.975	100%

**Section VI**  
**CO-OP CENTRAL GOA PROHIBITED SPECIES CATCH (PSC)**

The FCA co-op was initially allocated 43.217 mt of halibut PSC and used 29.051 mts.

**Section VII**  
**PROGRAM SIDEBOARDS**

The Rockfish Program established sideboard limitations (not allocations) that limited LLP holders participating in the program from expanding their harvests in other fisheries. These sideboard limitations apply only in July, historically the most active month for rockfish fishing.

This fishery opened under an industry agreement that further limited catch of the sideboard species.

**Section VIII**  
**PENALTIES/CIVIL ACTIONS**

There were no NMFS enforcement actions or other sanctions taken against the FCA cooperative fishing in the RP.