

Year end Report of The FCA Offshore Rockfish Cooperative

Submitted to:

**Regional Administrator
NMFS Alaska
P.O. Box 21668
Juneau, Alaska 99802**

The Fishing Company of Alaska, Inc.

580 NACHES AVE SW, SUITE 100 • RENTON, WASHINGTON 98057
PHONE (425) 738-5205 • FAX (425) 988-2144

TABLE OF CONTENTS

| | Page |
|--|------|
| I. INTRODUCTION | 3 |
| II. COOPERATIVE MEMBERSHIP | 4 |
| III. COOPERATIVE MANAGEMENT – MONITORING | 4 |
| IV. CO-OP ALLOCATIONS, TRANSFERS AND PERFORMANCE | 7 |
| V. WESTERN GULF OF ALASKA (WGOA) SIDEBOARDS | 8 |
| VI. CO-OP PROHIBITED SPECIES CATCH | 8 |
| VII. PROGRAM SIDEBOARDS | 8 |
| VIII. PENALTIES/CIVIL ACTIONS | 8 |

Section I

INTRODUCTION

The Council adopted the proposed Central GOA Rockfish Program on June 14, 2010, to replace the Pilot Program, which expired on December 31, 2011. The final rule implementing Amendment 88, the Rockfish Program, became effective on December 27, 2011. The CGOA Rockfish Program is similar to the Pilot Program, but does incorporate some changes, such as:

1. Uses different qualifying years for eligibility for QS.
2. Uses a different suite of years to determine sideboard limits and the allocation of QS

The CGOA Rockfish Program takes over the management of three primary rockfish species in the Central Gulf of Alaska (CGOA): Pacific ocean perch (POPA), northern rockfish (NORK), and dusky rockfish (DUSK). The CGOA Rockfish Program also allows for the formation of rockfish fishing cooperatives in the catcher vessel (CV) and catcher-processor (CP) sectors.

During the 2016 fishing season FCA cooperative performed quota transfers with the Gulf of Alaska Rockfish Best Use Cooperative.

Each cooperative received an annual harvest share allocation based on the qualified harvest history of its members (combined vessel quota shares or QS). In addition to the allocation of primary rockfish species (POPA, NORK, and DUSK), catcher processor cooperatives also received allocations of secondary species, which included sablefish, thornyhead, shortraker, roughey rockfish and halibut PSC mortality. The catcher processor (CP) vessel co-ops did not receive allocations of Pacific cod. The CP cod was managed as a maximum retainable amount (MRA). Allocations to both the inshore and catcher processor sectors were based on the average percentages of retained catch and halibut PSC mortality usage of these species in the target rockfish fisheries during the qualifying period. These allocations are distributed to the cooperative members based on the amount of primary rockfish that the cooperative member held.

2016 marks the fifth year of the CGOA Rockfish Program, and in compliance with Amendment 88, this annual report is submitted to the Council as a summary of harvests, transfers, and cooperative performance during the 2016 rockfish fishing season in the Central Gulf of Alaska (CGOA).

Section II COOPERATIVE MEMBERSHIP

The 2016 FCA Cooperative consisted of three member vessels, Alaska Spirit (LLP #3043), Alaska Victory (LLP #2080), and Alaska Warrior (LLP #2083; the Alaska Spirit actively fished in the Rockfish Program.

Member Licenses

| Vessel Name | ADF&G | USCG | LLP |
|----------------|-------|--------|------|
| Alaska Spirit | 59870 | 554913 | 3043 |
| Alaska Victory | 61083 | 569752 | 2080 |
| Alaska Warrior | 56965 | 590350 | 2083 |

Section III COOPERATIVE MANAGEMENT- MONITORING

The FCA Cooperative was represented and managed by Bill McGill of The Fishing Company of Alaska, Inc. in cooperation and coordination with the other offshore cooperative, Gulf of Alaska Rockfish Best Use Cooperative, inshore participants, and the National Marine Fisheries Service (in-season management).

It was FCA's 2016 cooperative harvesting strategy to manage the harvesting in the central GOA utilizing the Alaska Spirit and Alaska Victory to take the quota.

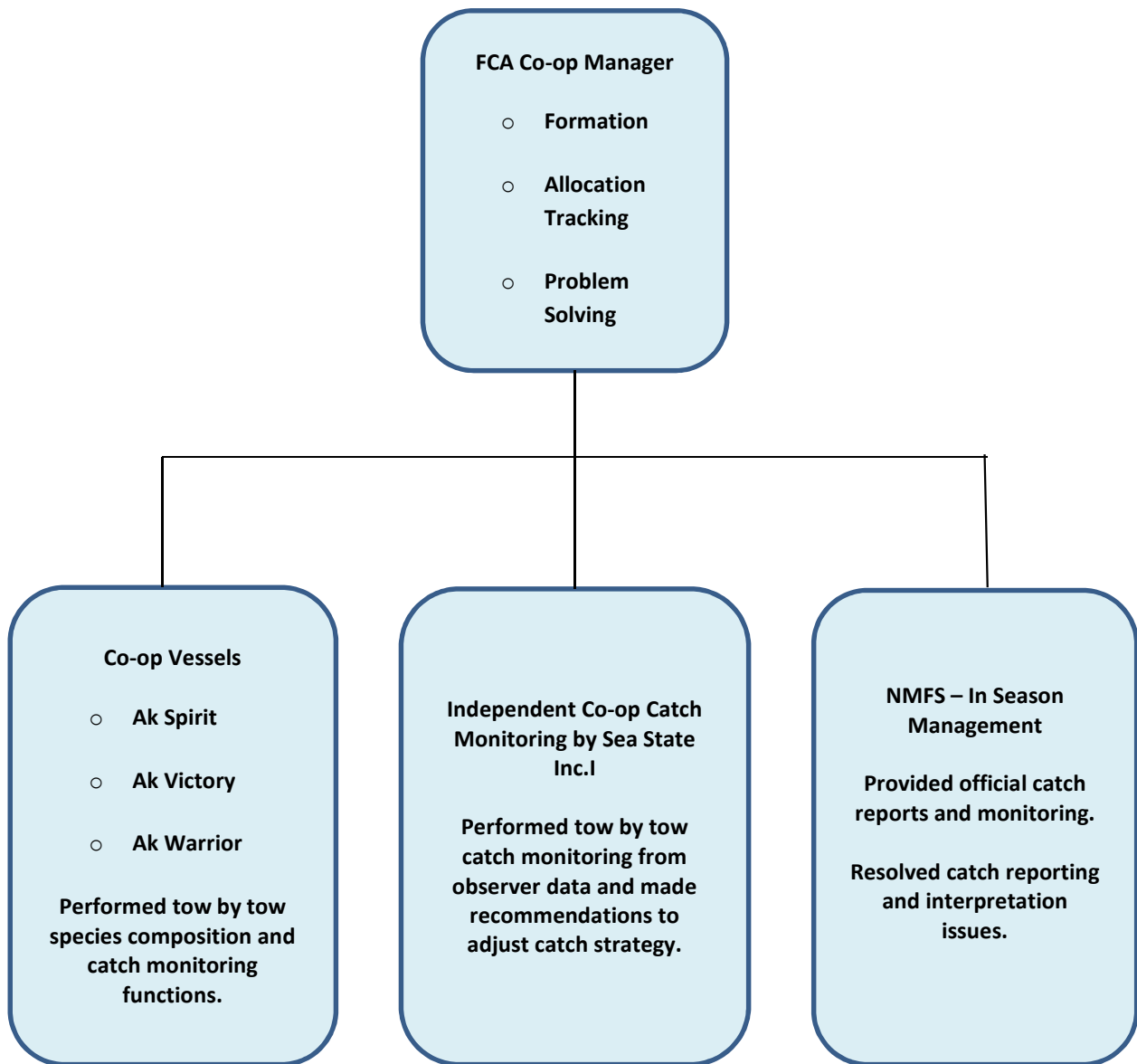
Based on our fishing experience in the GOA cooperative programs, FCA Cooperative developed an effective catch monitoring program and employed fishing techniques that were intended to maximize harvest and minimize PSC bycatch in the CGOA without exceeding any species or PSC allocations.

Vessel Catch-Monitoring

All of the FCA Cooperative vessels use onboard catch monitoring systems that allow them to compute and monitor catch on a tow by tow basis based on real time hail estimates, species composition, and observer information. Each vessel's accounting is compared to catch reports compiled by an independent catch monitoring company, Sea State, Inc., who utilized the most current official NMFS observer catch information. The comparative data was then transmitted to the vessels. Any discrepancies between vessel catch data and that compiled by Sea State were rectified.

In addition, a third check of catch data accuracy was made when the co-op manager compared the vessel and Sea State catch numbers with the NMFS account balance.

Figure 1. Schematic of Fishing Co. of Alaska Rockfish Cooperative Operations and Management.



Section IV CO-OP ALLOCATIONS, TRANSFERS and PERFORMANCE

FCA Cooperative allocations and transfers for the 2016 season are summarized by species in Table 1.

Table 1 Central Gulf of Alaska Allocations and Transfers IN and OUT of Cooperative by Species.

| NAME | FCA Allocation | Transferred In from or Out to the coop listed | In Transfers | Out Transfers | Total QS | Catch | CQ Remaining | Percent Harvested |
|---------------------------|----------------|---|--------------|---------------|-----------|-----------|--------------|-------------------|
| CGOA Dusky (PSR) | 291.253 | | 0 | 0 | 291.253 | 242.734 | 48.519 | 83.3% |
| CGOA Northern | 422.206 | Gulf of Alaska Best Use Cooperative | 0 | 31.500 | 390.706 | 390.296 | 0.410 | 99.9% |
| CGOA POP | 3,837.285 | Gulf of Alaska Best Use Cooperative | 0 | 10.000 | 3,827.285 | 3,826.951 | 0.334 | 99.9% |
| CGOA Roughey | 197.678 | GOA BUC | 0 | 68.450 | 129.228 | 33.802 | 95.426 | 26.2% |
| CGOA Sablefish | 67.066 | Gulf of Alaska Best Use Cooperative | 0 | 21.200 | 45.866 | 45.591 | 0.275 | 99.4% |
| CGOA Shortraker | 57.184 | | 0 | 0 | 57.184 | 38.950 | 18.234 | 68.1% |
| CGOA Thornyhead | 124.351 | Gulf of Alaska Best Use Cooperative | 0 | 93.859 | 30.492 | 22.046 | 8.446 | 72.3% |
| CGOA Halibut - PSC | 35.194 | | 0 | 0 | 35.194 | 16.219 | 18.975 | 46.1% |
| GOA DW Complex Halibut SB | 9.343 | | 0 | 0 | 9.633 | 0.909 | 8.434 | 9.7% |
| GOA SW Complex Halibut SB | 0 | | 0 | 0 | 0 | 0 | 0 | 0% |

No Chinook were taken during the 2015 Rockfish Program fishery.

Section V
WESTERN GULF OF ALASKA (WGOA) SIDEBOARDS

Table 2 Western GOA Sideboard Species

| Species Group | Area | Sideboard Percentage | Total CP Sideboard Limit (mt) | FCA Co-op Sideboard Limit (mt) | FCA Catch (mt) | FCA Balance (mt) | FCA % Remaining |
|---------------------|------|----------------------|-------------------------------|--------------------------------|----------------|------------------|-----------------|
| Northern Rockfish | WG | 87.89 | 911 | 298.414 | 44.536 | 253.878 | 14.9% |
| Pacific Ocean Perch | WG | 61.49 | 1,165 | 851.602 | 820.878 | 30.724 | 96.4% |
| Dusky (PSR) | WG | 92.31 | 214 | 115.464 | 45.864 | 69.600 | 39.7% |

Section VI
CO-OP CENTRAL GOA PROHIBITED SPECIES CATCH (PSC)

The FCA co-op was initially allocated 35.194 mts of halibut PSC and used 16.219 mts.

Section VII
PROGRAM SIDEBOARDS

The Rockfish Program established sideboard limitations (not allocations) that limited LLP holders participating in the program from expanding their harvests in other fisheries. These sideboard limitations apply only in July, historically the most active month for rockfish fishing.

This fishery opened under an industry agreement that further limited catch of the sideboard species.

Section VIII
PENALTIES/CIVIL ACTIONS

There were no NMFS enforcement actions or other sanctions taken against the FCA cooperative fishing in the RP.