

ANNUAL REPORT OF THE
WESTWARD FLEET COOPERATIVE
YEAR 2012

PREPARED FOR:

NORTH PACIFIC FISHERY MANAGEMENT COUNCIL

MARCH 15, 2013

PREPARED BY:

NATURAL RESOURCES CONSULTANTS, INC.
SEATTLE, WASHINGTON

POINT OF CONTACT:

STEVE HUGHES (206) 285-3480

**ANNUAL REPORT OF THE
WESTWARD FLEET COOPERATIVE
YEAR 2012**

**Presented to the
North Pacific Fishery Management Council
MARCH 15, 2013**

TABLE OF CONTENTS

	Page
INTRODUCTION	1
WESTWARD FLEET MEMBER VESSELS AND CO-OP MANAGEMENT.....	1
WFC BERING SEA POLLOCK ALLOCATION, TRANSFERS AND CATCH	3
OUTSIDE WESTWARD PROCESSOR DELIVERIES.....	4
BYCATCH IN THE BERING SEA POLLOCK FISHERY	4
SIDEBOARD LIMITATIONS, ALLOCATIONS AND CATCHES	5
DIRECTED BERING SEA COD AND GULF POLLOCK FISHERY	5
CATCHES BY GULF SIDEBOARD EXEMPT MEMBER VESSELS.....	6
WFC PROHIBITED SPECIES AND ALL SIDEBOARD CATCH TOTALS	6
WFC MONITORING AND ENFORCEMENT	7
EXHIBITS	8-20
ATTACHMENT 1	

LIST OF EXHIBITS

	Page
Exhibit 1. Schematic of Westward Fleet Cooperative operations, 2012.....	8
Exhibit 2. Percent distribution of 2012 Bering Sea “inshore pollock allocation” between the seven inshore AFA pollock cooperatives.....	9
Exhibit 3. Westward Fleet Cooperative member vessel initial pollock allocations expressed as a percentage of the co-op total, as a percentage of the Bering Sea inshore directed pollock fishery, and in metric tons for 2012.	10
Exhibit 4. Westward Fleet Cooperative member vessel final Bering Sea directed pollock allocations for 2012 after within co-op transfers and trades.....	11
Exhibit 5. Comparison of Westward Fleet Cooperative member vessels directed Bering Sea pollock catches with final allocations, 2012.	12
Exhibit 6. Directed pollock fishing catch and bycatch and PSC's for the Westward Fleet Cooperative member vessels, 2012.....	13
Exhibit 7. BSAI sideboard limits and aggregate catch by the Westward Fleet Cooperative member vessels, 2012.	14
Exhibit 8. GOA sideboard limits and aggregate catch by the Westward Fleet Cooperative member vessels, 2012.	15
Exhibit 9. Comparison of Westward Fleet Cooperative member vessels directed Bering Sea Pacific cod catches with final allocations, 2012.	16
Exhibit 10. Directed Pacific cod fishing catch and bycatch for the Westward Fleet Cooperative member vessels, 2012.	17
Exhibit 11. Transfers of Westward Fleet Cooperative Gulf of Alaska pollock sideboard limits to other catcher vessel co-ops, 2012.	18
Exhibit 12. Westward Fleet Cooperative vessel-by-vessel prohibited species catch, 2012.	19
Exhibit 13. Westward Fleet Cooperative vessel-by-vessel sideboard species catch (landed and discarded), 2012.....	20

**ANNUAL REPORT OF THE
WESTWARD FLEET COOPERATIVE
YEAR 2012**

**Presented to the
North Pacific Fishery Management Council
March 15, 2013**

INTRODUCTION

Westward Fleet Cooperative (WFC) is pleased to submit this document and results of their 2012 Bering Sea fishery to the North Pacific Fishery Management Council (NPFMC) in compliance with annual reporting requirements of the 1998 American Fisheries Act (AFA).

Year 2012 was the thirteenth year of WFC operations under the AFA. The Westward fleet was managed and operated during 2012 following the successful model established during the previous twelve year's fisheries—basically without change. This document format and 13 exhibits herein reporting WFC co-op members, management, allocations, catches, sideboard limits, prohibited species catches and enforcement is also consistent with WFC's earlier years reporting to the NPFMC. We believe this reporting format and detail is both in keeping with AFA reporting requirements and provides easy comparison to the prior year results.

WESTWARD FLEET MEMBER VESSELS AND CO-OP MANAGEMENT

Managing members representing 10 catcher vessels signed their WFC co-op membership agreement addendum for the 2012 fishing year on December 1, 2011, which enabled them to operate under the laws of the AFA in a fishery cooperative delivering pollock to Westward Seafood Inc., through the 2012 fishing season (Attachment 1) under terms of these agreements. The 2012 managing member owners and their respective vessels are listed below:

F. Gregory Baker, Managing Member

- Viking Limited Partnership F/V *Viking* 130 ft LOA
- Alaskan Command LLC, F/V *Alaskan Command* 185 ft LOA
- Westward Limited Partnership, F/V *Westward I* 127 ft LOA
- Pacific Knight LLC, F/V *Pacific Knight* 165 ft LOA
- Ocean Dynasty Limited Partnership, F/V *Chelsea K* 149 ft LOA

John and Robert Dooley, Managing Member

- Pacific Prince LLC, F/V *Pacific Prince* 148 ft LOA
- Caitlin Ann LLC, F/V *Caitlin Ann* 104 ft LOA

Dan Green, Managing Member, Wa'atch, Inc.

- F/V *Alyeska* 125 ft LOA

Bob Desautel, Managing Member, Dona Martita LLC

- F/V *Arctic Wind* 123 ft LOA
- F/V *Bering Defender*¹ 165 ft LOA

Co-op management and administration continued during 2012 basically unchanged from management and administration of the prior co-op years (Exhibit 1). Mr. Robert Dooley continued to serve as the president of WFC and Mr. Tim Cusick served as the co-op coordinator. Coordination of information on allocations, transfers, pollock catches, sideboard catches and prohibited species catches between the Westward plant in Dutch Harbor, the member vessels, Sea State, the Inter co-op Manager and the National Marine Fisheries Service all continued during 2012 as established in year 2000 and as conducted in 2001 through 2011.

¹ The F/V *Doña Martita* was rebuilt and renamed the F/V *Bering Defender*. The WFC harvest schedule in Attachment 1 identifies the vessel as *Doña Martita* but all 2012 fishing was conducted by the vessel renamed F/V *Bering Defender*.

WFC BERING SEA POLLOCK ALLOCATION, TRANSFERS AND CATCH

In 2012, the initial pollock allocation to WFC represented 18.183% of the AFA inshore-directed pollock allocation. WFC was the third largest tonnage co-op of the seven AFA inshore co-ops (Exhibit 2). WFC's 10 member vessels received AFA Bering Sea pollock allocations that totaled 96,196 mt. This co-op allocation was distributed among the 10 member vessels. Exhibit 3 provides details of the 10 vessel's initial pollock allocations. Individual vessel Bering Sea pollock allocations are expressed in tonnage, expressed as a percentage of the WFC total allocation and expressed as a percentage of the 2012 inshore directed pollock fishery.

Within the WFC, all of the 10 member vessels transferred pollock allocations among themselves. Two member vessels, *F/V Pacific Knight*, and *F/V Alyeska* transferred all of their allocation to other member vessels and remained inactive in the Bering pollock fishery during 2012. Exhibit 4 identifies the transfers of Bering Sea pollock within the co-op by member vessel and the resulting final allocations to member vessels after transfers were completed. The final allocations shown in Exhibit 4 represented tonnages of Bering Sea pollock available to member vessels for harvesting during the 2012 fishing seasons.

Individual WFC member vessels directed Bering Sea pollock catches by the eight vessels that operated are provided in Exhibit 5 and are compared to their respective final pollock allocations. The WFC total directed Bering Sea pollock catch of their co-op's allocation totaled 96,195.744 mt. Of this total catch, 90,481.182 mt was delivered by WFC vessels and 5,714.562 mt was delivered by four non-WFC vessels (Amendment 69 contract delivery). WFC total pollock deliveries were 99.99% of WFC pollock allocation.

OUTSIDE WESTWARD PROCESSOR DELIVERIES

Member vessels delivered 99.80% of WFC pollock catch to the co-op's affiliated processor - Westward Seafoods, Inc. Two non-WFC vessels (F/V Destination and F/V Morning Star) which were fishing under contract for WFC (Am 69 agreement) delivered pollock to other processors (125.645 mt and 69.853 mt to Alyeska and Unisea, respectively). Accordingly, WFC member vessels were in compliance with AFA Section (210)(b)(6), which provides that up to 10% of the pollock harvested within a co-op, can be delivered to processors other than the co-op's affiliated processor.

BYCATCH IN THE BERING SEA POLLOCK FISHERY

Bycatch of other groundfish, herring, halibut, crab and salmon from the directed Bering Sea pollock fishery is detailed by member vessel in Exhibit 6. Pollock represented 99.0% of the catch of pollock plus all other groundfish.

Vessel-level detail of salmon bycatch in the directed Bering Sea pollock fishery is reported for WFC in 2012 to meet additional reporting requirements implemented in 2008 under Amendment 84 (salmon bycatch ICA). Specifically, Exhibit 6 summarizes the seasonal (A and B) catches of Chinook and chum salmon (other salmon), and the number of appearances of each vessel on the "dirty 20" lists for both salmon species. To appear on the "dirty 20" list, a vessel must have exceeded the salmon bycatch base rate for that weekly period and have been among the top 20 vessels with the highest salmon bycatch rate for that weekly period.

Additional salmon bycatch measures were in effect under Amendment 91 in 2011. We have been advised that further details of salmon bycatch in 2012 (including the effectiveness of reduction measures) are to be provided in a Chinook salmon IPA annual report and the non-Chinook salmon ICA annual report – both of which are prepared at the Interco-op level.

SIDEBOARD LIMITATIONS, ALLOCATIONS AND CATCHES

The laws of the AFA place limits on AFA qualified catcher vessels whereby their harvest of groundfish other than Bering Sea pollock is limited to historic levels. Halibut bycatch (PSC) is also limited through the co-op sideboard allocations. By AFA definition, all catch of groundfish sideboard species made by non-exempt AFA catcher vessels, whether as targeted catch or incidental catch, are to be deducted from the sideboard limits. These are reported in the final harvest specifications for both the BSAI and GOA (76 FR 11139, 76 FR 11111) and are intended to be a cap on all catches of these species.

Initial BSAI sideboard limits for all AFA CV cooperatives totaled 55,058 mt for all sideboard species. Of this total, only BSAI Pacific cod was allocated further to AFA co-ops and the allocation to WFC vessels totaled 2,067 mt and no Pacific cod was transferred from WFC to other co-ops. A total of 2,593 mt of BSAI sideboard species were caught by WFC vessels and 1,134 mt of WFC allocated sideboards were left unharvested (Exhibit 7). Aggregate differences between catch and sideboard limits for all AFA CV cooperatives will be reported in the Interco-op Report.

Initial GOA sideboard limits for all AFA CV cooperatives totaled 45,525 mt for all sideboard species. Primarily pollock and Pacific cod were allocated further to AFA co-ops and this allocation to WFC vessels totaled 4,614 mt. Of this total, 636 mt were transferred from WFC to other co-ops leaving 3,978 mt of sideboard available to WFC vessels (Exhibit 8). WFC member vessels did not conduct fisheries for pollock or for other species of groundfish in the GOA management region and all GOA sideboard limits were left unharvested.

DIRECTED BERING SEA COD AND GULF POLLOCK FISHERY

WFC's directed Bering Sea Pacific cod allocations, transfers and catches for 2011 are presented in Exhibit 9 by member vessel. Member vessel directed Bering

Sea Pacific cod allocations totaled 3,203.00 mt of which 1,219.65 mt were harvested by WFC co-op vessels. Only two member vessels participated in the WFC directed Bering Sea Pacific cod harvest. A total of 1,983.35 mt of the final WFC cod allocation remained unharvested.

Bycatch of other groundfish, halibut, herring, crab and salmon in the WFC directed Bering Sea cod fishery is detailed in Exhibit 10. Cod comprised 69.9% of the cod plus other groundfish catch in WFC's directed Bering Sea cod fishery.

As earlier noted in Exhibit 8, WFC's Gulf of Alaska pollock and cod sideboard allocations totaled 4,614 mt and consisted of 3,686 mt Area 610 pollock, 454 mt of Area 620 pollock, 182 mt of Area 630 pollock and 292 mt of Area 640 pollock. Of this total, there were 636 mt transferred to other co-ops as reported in Exhibit 11. WFC member vessels did not fish Gulf of Alaska pollock in 2011 leaving 3,978 mt of Gulf of Alaska pollock un-harvested and un-transferred to other co-ops.

CATCHES BY GULF SIDEBOARD EXEMPT MEMBER VESSELS

No WFC vessels are qualified as Gulf of Alaska sideboard exempt.

WFC PROHIBITED SPECIES AND ALL SIDEBOARD CATCH TOTALS

WFC member vessel prohibited species catch totals for halibut, herring, Bristol Bay red king crab, *bairdi* Tanner crab, other Tanner crab, Chinook salmon and other salmon are provided in Exhibit 12. WFC member vessels' total catch (landings and discards) for all BSAI sideboard species by area and vessel is shown in Exhibit 13.

WFC MONITORING AND ENFORCEMENT

All WFC directed Bering Sea pollock and cod catches, as well as sideboard catches and the halibut PSC were successfully managed and did not exceed allocations. The co-op was accordingly not required to take any enforcement actions.

Exhibit 1. Schematic of Westward Fleet Cooperative operations, 2012.

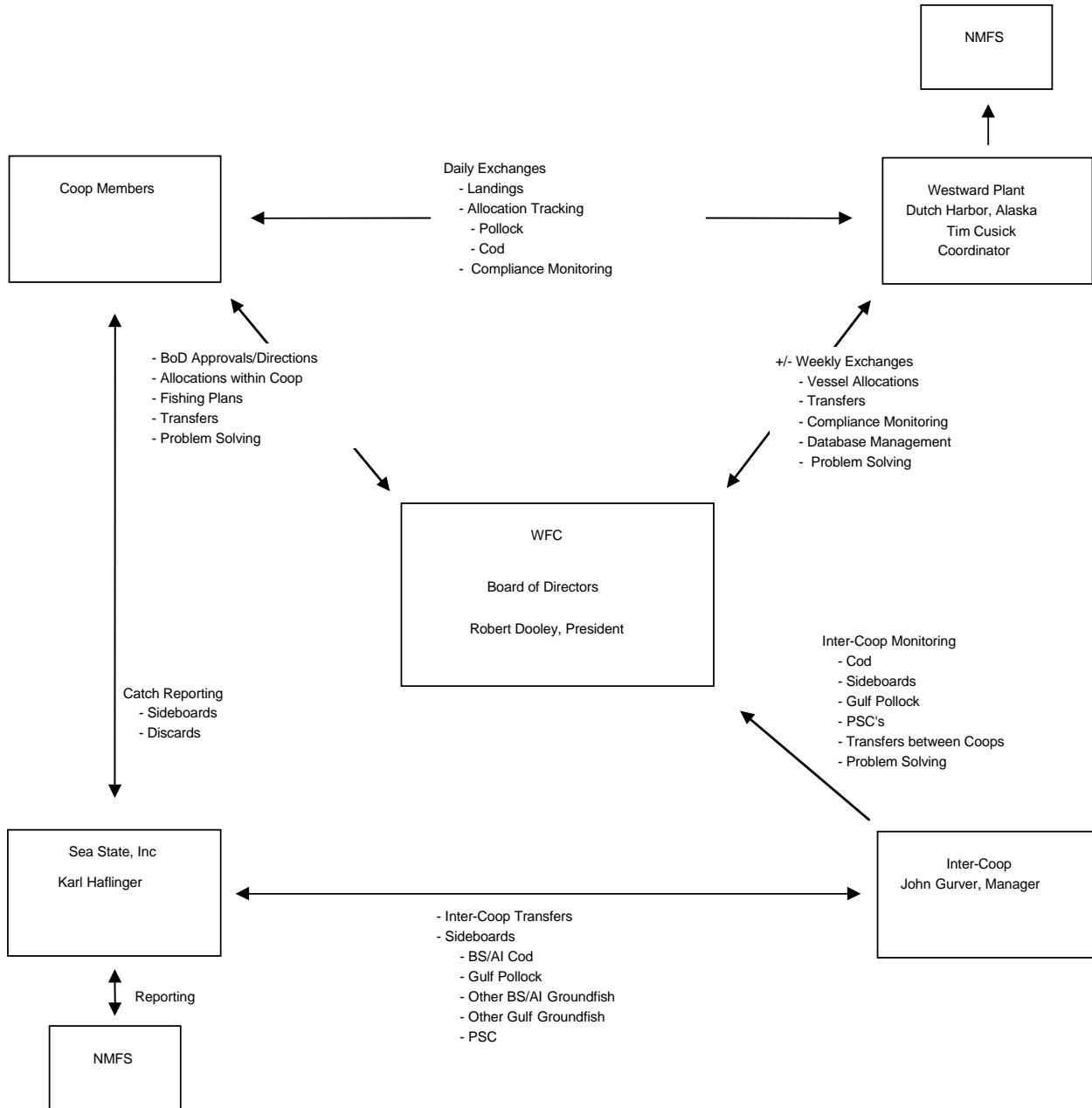


Exhibit 2. Percent distribution of 2012 Bering Sea "inshore pollock allocation" between the seven inshore AFA pollock cooperatives.

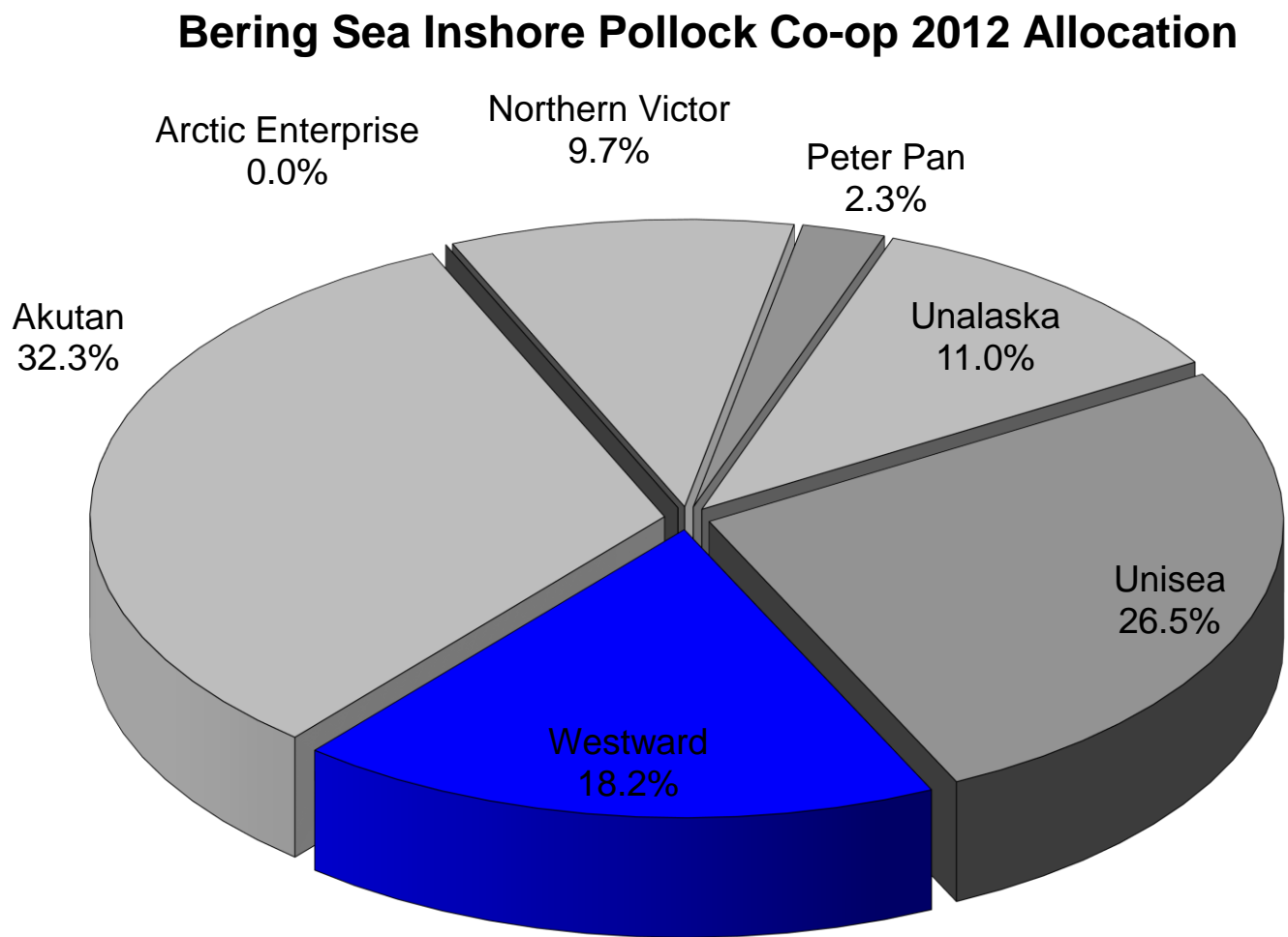


Exhibit 3. Westward Fleet Cooperative member vessel initial pollock allocations expressed as a percentage of the co-op total, as a percentage of the Bering Sea inshore directed pollock fishery, and in metric tons for 2012.

Member Vessels	% of Co-op Allocation	% of AFA Inshore Directed Pollock Fishery	Annual Allocation (MT)
Alaskan Command	2.056%	0.374%	1,977.309
Alyeska	6.652%	1.209%	6,398.477
Arctic Wind	6.074%	1.104%	5,843.137
Caitlin Ann	5.265%	0.957%	5,064.238
Chelsea K	25.589%	4.653%	24,615.979
Bering Defender	11.579%	2.105%	11,138.439
Pacific Knight	12.011%	2.184%	11,554.005
Pacific Prince	13.090%	2.380%	12,591.960
Viking	9.125%	1.659%	8,777.500
Westward 1	8.561%	1.557%	8,234.859
WFC Total	100.000%	18.183%	96,196.000 *

* Some totals are rounded. Vessel percentages are as published in WFC harvest schedule and final allocations are derived using harvest schedule percentages and the final cooperative pollock allocation posted at; <http://www.fakr.noaa.gov/sustainablefisheries/afa/12bsaicoopallocations.pdf>

Exhibit 4. Westward Fleet Cooperative member vessel final Bering Sea directed pollock allocations for 2012 after within co-op transfers and trades.

Member Vessels	Annual Allocation (MT)	Within Co-op Net Transfer In (+) MT & Out (-) MT	Within Co-op Trades In (+) MT & Out (-) MT	Final Pollock Allocation (MT)
Alaskan Command	1,977.309	+15,843.484	0.000	17,820.793
Alyeska	6,398.477	-6,398.477	0.000	0.000
Arctic Wind	5,843.137	+719.675	0.000	6,562.812
Caitlin Ann	5,064.238	+626.028	0.000	5,690.266
Chelsea K	24,615.979	-5,274.260	0.000	19,341.719
Bering Defender	11,138.439	-642.457	0.000	10,495.982
Pacific Knight	11,554.005	-11,554.005	0.000	0.000
Pacific Prince	12,591.960	+819.468	0.000	13,411.428
Viking	8,777.500	+3,691.784	0.000	12,469.285
Westward 1	8,234.859	+2,168.829	0.000	10,403.688
WFC Total	96,196.000 *	0.000	0.000	96,196.000 *

* Some totals are rounded.

Exhibit 5. Comparison of Westward Fleet Cooperative member vessels directed Bering Sea pollock catches with final allocations, 2012.

Member Vessels	Final Pollock Allocation (MT)	Directed Bering Sea Pollock Catch by Vessel (MT)	Difference Over (+) Under (-)
Alaskan Command	17,820.793	17,821.008	+0.215
Alyeska	0.000	0.000	0.000
Arctic Wind	6,562.812	6,562.669	-0.144
Caitlin Ann	5,690.266	5,690.429	+0.163
Chelsea K	19,341.719	19,342.184 *	+0.465
Bering Defender	10,495.982	10,495.601 *	-0.381
Pacific Knight	0.000	0.000	0.000
Pacific Prince	13,411.428	13,411.276	-0.152
Viking	12,469.285	12,469.030	-0.254
Westward 1	10,403.688	10,403.548	-0.140
WFC Total	96,196.000	96,195.744 **	-0.229

* Directed catch includes Amendment 69 contractual fishing amounts as reported by the Co-op where 5,588.917 mt of F/V Bering Defender allocation was delivered by two non-WFC vessels, and 125.645 mt of F/V Chelsea K allocation was delivered by one non-WFC vessel.

**Some totals are rounded

Exhibit 6. Directed pollock fishing catch and bycatch and PSC's for the Westward Fleet Cooperative member vessels, 2012.

Member Vessels	Directed Bering Sea Pollock Catch by Vessel (MT)	Other Groundfish (MT)	Herring (MT)	Halibut Mortality (MT)	Red King Crab (#)	<i>Bairdi</i> Tanner Crab (#)	<i>Other</i> Tanner Crab (#)	A Season**		B Season**	
								Chinook Salmon # (D2)	Other Salmon # (D2)	Chinook Salmon # (D2)	Other Salmon # (D2)
Alaskan Command	17,821.008	180.420	53	4	0	0	9	384 (0)	0 (0)	2 (0)	98 (1)
Alyeska	0.000	0.000	0	0	0	0	0	0 (0)	0 (0)	0 (0)	0 (0)
Arctic Wind	6,562.669	90.247	76	0	0	0	306	63 (0)	0 (0)	0 (0)	15 (0)
Caitlin Ann	5,690.429	82.656	20	1	0	0	0	43 (0)	0 (0)	7 (0)	54 (1)
Chelsea K*	19,342.184	150.914	236	2	0	0	12	245 (0)	0 (0)	1 (0)	116 (1)
Bering Defender*	10,495.601	11.677	306	1	0	0	0	5 (0)	0 (0)	1 (0)	94 (0)
Pacific Knight	0.000	0.000	0	0	0	0	0	0 (0)	0 (0)	0 (0)	0 (0)
Pacific Prince	13,411.276	197.366	6	1	0	0	0	198 (0)	0 (0)	0 (0)	52 (1)
Viking	12,469.030	121.170	92	3	0	0	0	127 (0)	0 (0)	0 (0)	32 (1)
Westward 1	10,403.548	145.289	71	3	0	0	0	140 (0)	0 (0)	0 (0)	122 (2)
WFC Total	96,195.744	979.739	858	15	0	0	327	1,205	0	11	583

Directed pollock catch totals are from Westward. All other PSCs and Other Groundfish are from Seastate.

* Catches from Amendment 69 contractual fishing by three other vessels are included in two WFC vessel totals.

** Chinook and other salmon counts per vessel by season and number of appearances of each vessel on the weekly "dirty 20" list (D2)

Exhibit 7. BSAI sideboard limits and aggregate catch by the Westward Fleet Cooperative member vessels, 2012.

BSAI Sideboard Species Limits from 2012 Final Specs Table 13 Area/Species/Season	Total AFA CV Sideboard Limit (mt)	Initial WFC** Sideboard Limit (mt)	Inter-Co-op Sideboard Transfer (mt)	Final Sideboard Limit (mt)***	WFC Co-op Catch (mt)	Difference Over "+" (mt) Under "-" (mt)
BSAI Pacific cod	44,344	3,201	0	3,201	2,067	-1,134
BS Sablefish	86	NA	NA	NA	0	NA
AI Sablefish	28	NA	NA	NA	0	NA
Eastern BSAI Atka mackerel	110	NA	NA	NA	1	NA
Central AI Atka mackerel	0	NA	NA	NA	0	NA
Western AI Atka mackerel	0	NA	NA	NA	0	NA
BSAI rock sole	2,649	NA	NA	NA	141	NA
BS Greenland turbot	342	NA	NA	NA	6	NA
AI Greenland turbot	42	NA	NA	NA	0	NA
BSAI arrowtooth flounder	1,466	NA	NA	NA	30	NA
BSAI Kamchatka flounder	1,038	NA	NA	NA	0	NA
BSAI Alaska plaice	900	NA	NA	NA	0	NA
BSAI other flatfish	120	NA	NA	NA	13	NA
BSAI flathead sole	1,539	NA	NA	NA	193	NA
BS Pacific ocean perch	485	NA	NA	NA	9	NA
Eastern AI Pacific ocean perch	39	NA	NA	NA	0	NA
Central AI Pacific ocean perch	11	NA	NA	NA	0	NA
Western AI Pacific ocean perch	0	NA	NA	NA	0	NA
BSAI northern rockfish	34	NA	NA	NA	0	NA
BSAI shortraker rockfish	1	NA	NA	NA	0	NA
EBS/EAI rougheye rockfish	1	NA	NA	NA	0	NA
CAI/WAI rougheye rockfish	1	NA	NA	NA	0	NA
BS other rockfish	2	NA	NA	NA	1	NA
AI other rockfish	5	NA	NA	NA	0	NA
BSAI squid	138	NA	NA	NA	24	NA
BSAI skates	1,336	NA	NA	NA	83	NA
BSAI sharks	11	NA	NA	NA	5	NA
BSAI octopuses	49	NA	NA	NA	0	NA
BSAI sculpins	281	NA	NA	NA	21	NA
Co-op All Species Sideboard Total	55,058	NA	0	NA	2,593	-1,134
PSC limited halibut for Bering Sea						
Directed cod fishery		38				

Note: Some totals are rounded. Catch totals are from Seastate data

Yellowfin sole exempted as sideboard species by 679.64(b)(6).

* WFC sideboard allocations are made from total AFA CV sideboard limit when a directed fishery may occur - for 2012 this was for Pacific cod only as directed fishing is prohibited (see Table 13, 77FR10669) for all BSAI sideboard species except Pacific cod and yellowfin sole (see note* above).

** Final sideboard limit totals may also include amounts withheld for bycatch requirements.

Exhibit 8. GOA sideboard limits and aggregate catch by the Westward Fleet Cooperative member vessels, 2012.

GOA Sideboard Species Limits from 2012 Final Specs Table 19*	Total AFA CV Sideboard Limit (mt)	Initial WFC* Sideboard Limit (mt)	Inter-Co-op Sideboard Transfer (mt)	Final Sideboard Limit (mt)**	WFC Co-op Catch (mt)	Difference Over "+-" (mt) Under "-" (mt)
Area 610 "A" season pollock	3,505	706	0	706	0	-706
Area 620 "A" season pollock	1,636	139	-139	0	0	0
Area 630 "A" season pollock	1,174	40	-40	0	0	0
Area 610 "B" season pollock	3,505	706	0	706	0	-706
Area 620 "B" season pollock	2,010	171	-171	0	0	0
Area 630 "B" season pollock	525	18	-18	0	0	0
Area 610 "C" season pollock	5,647	1,137	0	1,137	0	-1,137
Area 620 "C" season pollock	850	72	-72	0	0	0
Area 630 "C" season pollock	1,822	62	-62	0	0	0
Area 610 "D" season pollock	5,647	1,137	0	1,137	0	-1,137
Area 620 "D" season pollock	850	72	-72	0	0	0
Area 630 "D" season pollock	1,822	62	-62	0	0	0
Area 640 Annual pollock	1,134	292	0	292	0	-292
Area 650 Annual pollock	3,766	NA	NA	NA	0	NA
Western "A" season GOA Pacific cod	1,679	0	0	0	0	0
Central "A" season GOA Pacific cod	1,773	0	0	0	0	0
Western "B" season GOA Pacific cod	1,119	0	0	0	0	0
Central "B" season GOA Pacific cod	1,182	0	0	0	0	0
Eastern Annual GOA Pacific cod	16	NA	NA	NA	0	NA
Western GOA sablefish	0	0	0	0	0	0
Central GOA sablefish	74	NA	NA	NA	0	NA
Eastern GOA sablefish	12	NA	NA	NA	0	NA
Western GOA shallow-water flatfish	207	NA	NA	NA	0	NA
Central GOA shallow-water flatfish	1,057	0	0	0	0	0
Eastern GOA shallow-water flatfish	73	NA	NA	NA	0	NA
Western GOA deep-water flatfish	0	0	0	0	0	0
Central GOA deep-water flatfish	149	0	0	0	0	0
Eastern GOA deep-water flatfish	34	NA	NA	NA	0	NA
Western GOA rex sole	1	NA	NA	NA	0	NA
Central GOA rex sole	246	0	0	0	0	0
Eastern GOA rex sole	5	NA	NA	NA	0	NA
Western GOA arrowtooth flounder	30	NA	NA	NA	0	NA
Central GOA arrowtooth flounder	2,100	0	0	0	0	0
Eastern GOA arrowtooth flounder	3	NA	NA	NA	0	NA
Western GOA flathead sole	31	NA	NA	NA	0	NA
Central GOA flathead sole	328	0	0	0	0	0
Eastern GOA flathead sole	6	NA	NA	NA	0	NA
Western GOA Pacific ocean perch	5	NA	NA	NA	0	NA
Central GOA Pacific ocean perch	842	NA	NA	NA	0	NA
Eastern GOA Pacific ocean perch	166	NA	NA	NA	0	NA
Western GOA northern rockfish	1	NA	NA	NA	0	NA
Central GOA northern rockfish	93	NA	NA	NA	0	NA
Western GOA shortraker rockfish	0	NA	NA	NA	0	NA
Central GOA shortraker rockfish	10	NA	NA	NA	0	NA
Eastern GOA shortraker rockfish	6	NA	NA	NA	0	NA
Western GOA other rockfish	0	NA	NA	NA	0	NA
Central GOA other rockfish	103	NA	NA	NA	0	NA
Eastern GOA other rockfish	0	NA	NA	NA	0	NA
Western GOA pelagic shelf rockfish	0	NA	NA	NA	0	NA
Central GOA pelagic shelf rockfish	0	NA	NA	NA	0	NA
Eastern GOA pelagic shelf rockfish	6	NA	NA	NA	0	NA
Western GOA rougheye rockfish	0	NA	NA	NA	0	NA
Central GOA rougheye rockfish	20	NA	NA	NA	0	NA
Eastern GOA rougheye rockfish	4	NA	NA	NA	0	NA
SEO GOA demersal shelf rockfish	1	NA	NA	NA	0	NA
Western GOA thornyhead rockfish	4	NA	NA	NA	0	NA
Central GOA thornyhead rockfish	21	NA	NA	NA	0	NA
Eastern GOA thornyhead rockfish	21	NA	NA	NA	0	NA
GOA Atka mackerel	62	NA	NA	NA	0	NA
Western GOA big skates	3	NA	NA	NA	0	NA
Central GOA big skates	11	NA	NA	NA	0	NA
Eastern GOA big skates	9	NA	NA	NA	0	NA
Western GOA longnose skates	0	NA	NA	NA	0	NA
Central GOA longnose skates	12	NA	NA	NA	0	NA
Eastern GOA longnose skates	4	NA	NA	NA	0	NA
GOA other skates	13	NA	NA	NA	0	NA
GOA squids	7	NA	NA	NA	0	NA
GOA sharks	38	NA	NA	NA	0	NA
GOA octopuses	9	NA	NA	NA	0	NA
GOA sculpins	36	NA	NA	NA	0	NA
Co-op All Species Sideboard Total	45,525	4,614	-636	3,978	0	-3,978

Note: Some totals are rounded. Catch totals are from WFC & Seastate data.

* WFC sideboard allocations are made from total AFA CV sideboard limit (Table 19, 77FR15194) when a directed fishery may occur.

** Final sideboard limit totals may also include amounts withheld for bycatch requirements.

Exhibit 9. Comparison of Westward Fleet Cooperative member vessels directed Bering Sea Pacific cod catches with final allocations, 2012.

Member Vessels	Initial Coop Cod Allocation (MT)	Within Coop Net Transfer In (+) & Out (-)	InterCoop Transfers (MT) In (+), Out (-)	Westward Coop Final Adjusted Cod Allocation (MT)	Directed Bering Sea Cod Catch by Vessel (MT)	Difference Over (+) Under (-)
Alaskan Command	0.00	0.00	0.00	0.00	0.00	0.00
Alyeska	0.00	0.00	0.00	0.00	0.00	0.00
Arctic Wind	524.12	+41.00	0.00	565.12	565.11	-0.01
Caitlin Ann	535.55	+119.00	0.00	654.55	654.54	-0.01
Chelsea K	95.96	0.00	0.00	95.96	0.00	-95.96
Bering Defender	466.26	-41.00	0.00	425.26	0.00	-425.26
Pacific Knight	206.37	0.00	0.00	206.37	0.00	-206.37
Pacific Prince	497.22	-119.00	0.00	378.22	0.00	-378.22
Viking	453.37	0.00	0.00	453.37	0.00	-453.37
Westward 1	424.14	0.00	0.00	424.14	0.00	-424.14
WFC Total	3,203.00	0.00	0.00	3,203.00	1,219.65	-1,983.35

Exhibit 10. Directed Pacific cod fishing catch and bycatch for the Westward Fleet Cooperative member vessels, 2012.

Member Vessels	Directed Bering Sea Cod Catch by Vessel (MT)	Other Groundfish Catch (MT)	Halibut Mortality (MT)	Herring Catch (MT)	Red King Catch (#)	<i>Bairdi</i> Tanner Catch (#)	Other Tanner Catch (#)	Chinook Salmon (#)	Other Salmon (#)
Alaskan Command	0.000	0.000	0	0	0	0	0	0	0
Alyeska	0.000	0.000	0	0	0	0	0	0	0
Arctic Wind	565.108	222.575	20	0	0	126	612	0	0
Caitlin Ann	654.543	301.403	10	0	0	0	171	0	0
Chelsea K	0.000	0.000	0	0	0	0	0	0	0
Bering Defender	0.000	0.000	0	0	0	0	0	0	0
Pacific Knight	0.000	0.000	0	0	0	0	0	0	0
Pacific Prince	0.000	0.000	0	0	0	0	0	0	0
Viking	0.000	0.000	0	0	0	0	0	0	0
Westward 1	0.000	0.000	0	0	0	0	0	0	0
WFC Total	1,219.651	523.978	30	0	0	126	783	0	0

Pacific cod catch totals are from Westward. All other PSCs and Other Groundfish are from Seastate.

Exhibit 11. Transfers of Westward Fleet Cooperative Gulf of Alaska pollock and cod sideboard limits to other catcher vessel co-ops, 2012.

Gulf Area/Season	Transfers To	Transfer Amount (MT)
Pollock 620 A Season	Unalaska	139.000
Pollock 620 B Season	Unalaska	171.000
Pollock 620 C Season	Unalaska	72.000
Pollock 620 D Season	Unalaska	72.000
Pollock 630 A Season	Unalaska	40.000
Pollock 630 B Season	Unalaska	18.000
Pollock 630 C Season	Unalaska	62.000
Pollock 630 D Season	Unalaska	62.000
Total GOA Transfers		636.000

Exhibit 12. Westward Fleet Cooperative vessel-by-vessel prohibited species catch, 2012.

Member Vessels	Total Halibut Mortality (MT)	Total Herring Catch (MT)	Total Red King Crab (#)	Total Bairdi Tanner Crab (#)	Total Other Tanner Crab (#)	Total Chinook Salmon (#)	Total Other Salmon (#)
Alaskan Command	4	53	0	0	9	384	98
Alyeska	0	0	0	0	0	0	0
Arctic Wind	20	76	0	126	918	63	15
Caitlin Ann	11	20	0	0	171	43	54
Chelsea K	2	236	0	0	12	245	116
Bering Defender	1	306	0	0	0	5	94
Pacific Knight	0	0	0	0	0	0	0
Pacific Prince	1	6	0	0	0	198	52
Viking	3	92	0	0	0	127	32
Westward 1	3	71	0	0	0	140	122
WFC Total	46	858	0	126	1,109	1,205	583

Exhibit 13. Westward Fleet Cooperative vessel-by-vessel sideboard species catch (landed and discarded), 2012.

GF Spp/Area	AK Command	Alyeska	Arctic Wind	Caitlin Ann	Chelsea K	Ber. Defender	Pac. Knight	Pac. Prince	Viking	Westward I	Grand Total	
Landed Catch (mt)	Pcod BSAI	75	0	712	860	94	20	0	145	71	87	2,064
	Flathead BSAI	41	0	17	20	30	12	0	20	29	17	187
	Rocksole BSAI	42	0	8	14	9	18	0	5	3	3	103
	Skates BSAI	9	0	7	9	6	7	0	8	7	15	69
	Arrowtooth BSAI	3	0	4	1	2	1	0	3	4	6	25
	Squid BSAI	0	0	0	2	0	0	0	9	4	10	24
	Oflats BSAI	3	0	0	1	1	0	0	1	1	3	10
	Sculpins BSAI	2	0	0	1	1	0	0	1	0	1	6
	Turbot BS	1	0	0	0	1	2	0	0	0	0	5
	POP BS	0	0	0	0	0	0	0	2	0	1	4
	Yellowfin BSAI	0	0	0	0	1	0	0	0	1	0	2
	Sharks BSAI	0	0	0	0	0	0	0	0	0	0	1
	Mackerel BS/541	0	0	0	0	0	0	0	0	0	0	1
	ORockfish BS	0	0	0	0	0	0	0	0	0	0	0
	Northern BSAI	0	0	0	0	0	0	0	0	0	0	0
	Octopus BSAI	0	0	0	0	0	0	0	0	0	0	0
	Shorotraker BSAI	0	0	0	0	0	0	0	0	0	0	0
	AKPlaice BSAI	0	0	0	0	0	0	0	0	0	0	0
	Kamchatka BSAI	0	0	0	0	0	0	0	0	0	0	0
Discarded Catch (mt)	Pcod BSAI	0	0	1	2	0	0	0	0	0	0	3
	Flathead BSAI	0	0	3	4	0	0	0	0	0	0	7
	Rocksole BSAI	0	0	17	21	0	0	0	0	0	0	38
	Skates BSAI	1	0	4	4	2	2	0	0	1	1	14
	Arrowtooth BSAI	0	0	2	3	0	0	0	0	0	0	5
	Squid BSAI	0	0	0	0	0	0	0	0	0	0	0
	Oflats BSAI	0	0	1	1	0	0	0	0	0	0	3
	Sculpins BSAI	0	0	7	8	0	0	0	0	0	0	15
	Turbot BS	0	0	0	0	0	0	0	0	0	0	0
	POP BS	1	0	0	0	1	0	0	1	1	1	5
	Yellowfin BSAI	0	0	0	0	0	0	0	0	0	0	0
	Sharks BSAI	1	0	0	0	1	0	0	1	1	0	4
	Mackerel BS/541	0	0	0	0	0	0	0	0	0	0	1
	ORockfish BS	0	0	0	0	0	0	0	0	0	0	0
	Northern BSAI	0	0	0	0	0	0	0	0	0	0	0
	Octopus BSAI	0	0	0	0	0	0	0	0	0	0	0
	Shorotraker BSAI	0	0	0	0	0	0	0	0	0	0	0
	AKPlaice BSAI	0	0	0	0	0	0	0	0	0	0	0
	Kamchatka BSAI	0	0	0	0	0	0	0	0	0	0	0

Note:

Total landings and discards of BSAI sideboard species by vessel are provided by Seastate and represent all directed or incidental catch (both landings and discards) taken in all WFC fishing in 2012. Yellowfin sole is shown but is not a sideboard species in 2012.

ATTACHMENT 1

WFC MEMBERSHIP AGREEMENT 2012 ADDENDUM

WESTWARD FLEET COOPERATIVE

MEMBERSHIP AGREEMENT

2012 ADDENDUM

Each of the undersigned hereby acknowledges and agrees that the terms and conditions of the Westward Fleet Cooperative Membership Agreement dated as of December 23, 1999, as amended by that First Amendment to Membership Agreement dated as of January 15, 2004, that Membership Agreement Addendum dated as of November 16, 2010, and that Membership Agreement Addendum dated as of November 28, 2011 shall be in full force and effect among the undersigned for the year 2012, and that Exhibit A attached hereto supersedes Exhibit A to the Membership Agreement and to all prior amendments and addenda thereto.

In addition, each of the undersigned hereby certifies that the vessel on behalf of which it is executing this Addendum: (i) delivered more pollock to Westward Seafoods, Inc. than to any other AFA inshore processor in the last year in which the vessel engaged in directed fishing for pollock in the BSAI for delivery to the inshore sector; (ii) is a qualified catcher vessel; (iii) is otherwise eligible to fish for groundfish in the BSAI; (iv) has an AFA catcher vessel permit with an inshore endorsement; and (v) has no permit sanctions or other type of sanctions against it that would prevent it from fishing for groundfish in the BSAI.

Dated effective as of December 1, 2011.

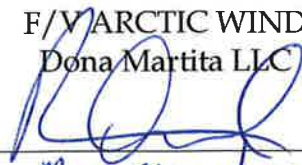
F/V ALASKAN COMMAND
Alaskan Command L.L.C.

By: 
Its: ENGINEERING MANAGER

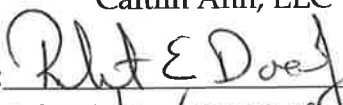
F/V ALYESKA
Wa'atch, Inc.

By: 
Its: POA

F/V ARCTIC WIND
Dona Martita LLC

By: 
Its: My Member

F/V CAITLIN ANN
Caitlin Ann, LLC


By: 
Its: member/manager

[SIGNATURES CONTINUE ON PAGE 2]


F/V CHELSEA K
Ocean Dynasty Limited Partnership

By: 
Its: ENGINEERING MANAGER

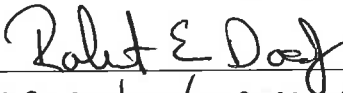
F/V DONA MARTITA
Dona Martita LLC

By: 
Its: My Member

F/V PACIFIC KNIGHT
Pacific Knight LLC

By: 
Its: ENGINEERING MANAGER

F/V PACIFIC PRINCE
Pacific Prince, LLC

By: 
ITS: member/manager

F/V VIKING
Viking Limited Partnership

By: 
Its: ENGINEERING MANAGER

F/V WESTWARD 1
Westward Limited Partnership

By: 
Its: ENGINEERING MANAGER

WESTWARD FLEET COOPERATIVE

By: 
Its: EXECUTIVE DIRECTOR

WESTWARD FLEET COOPERATIVE
EXHIBIT A TO 2012 ADDENDUM

BERING SEA/ ALEUTIAN ISLANDS POLLOCK FISHERY
HARVEST SCHEDULE

<i>Member</i>	<i>Vessel</i>	<i>Percentage of Allocation</i>
Alaskan Command L.L.C.	ALASKAN COMMAND	2.056%
Wa'atch, Inc.	ALYESKA	6.652%
Dona Martita LLC	ARCTIC WIND	6.074%
Caitlin Ann, LLC	CAITLIN ANN	5.265%
Ocean Dynasty Limited Partnership	CHELSEA K	25.589%
Dona Martita LLC	DONA MARTITA	11.579%
Pacific Knight LLC	PACIFIC KNIGHT	12.011%
Pacific Prince, LLC	PACIFIC PRINCE	13.090%
Viking Limited Partnership	VIKING	9.125%
Westward Limited Partnership	WESTWARD 1	8.561%
TOTAL		100.000%