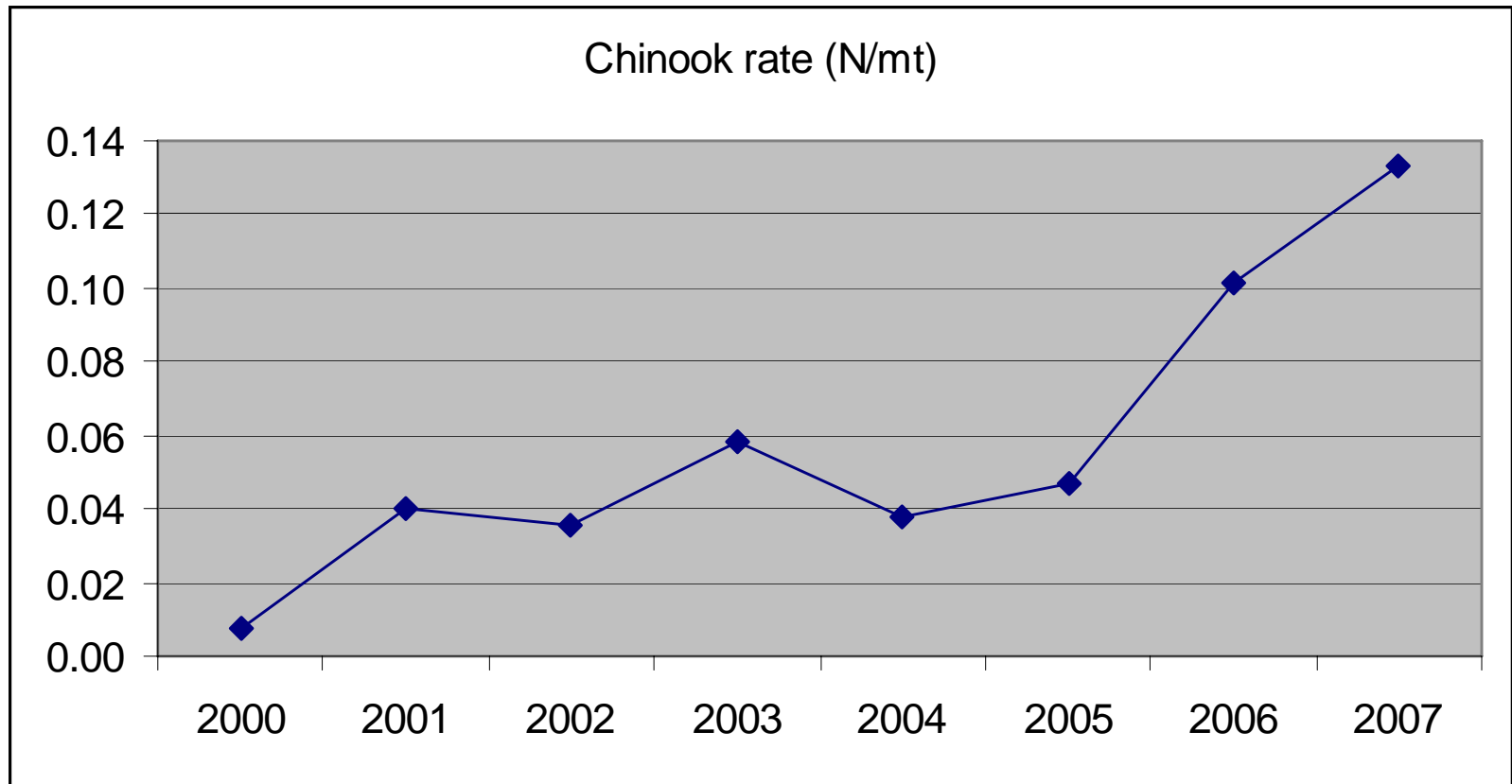


Intercoop salmon avoidance program, 2007 A season

Karl Haflinger Sea State

John Gruver, UCB

Chinook bycatch rate, pollock A season through 3/15, 2000 - 2007

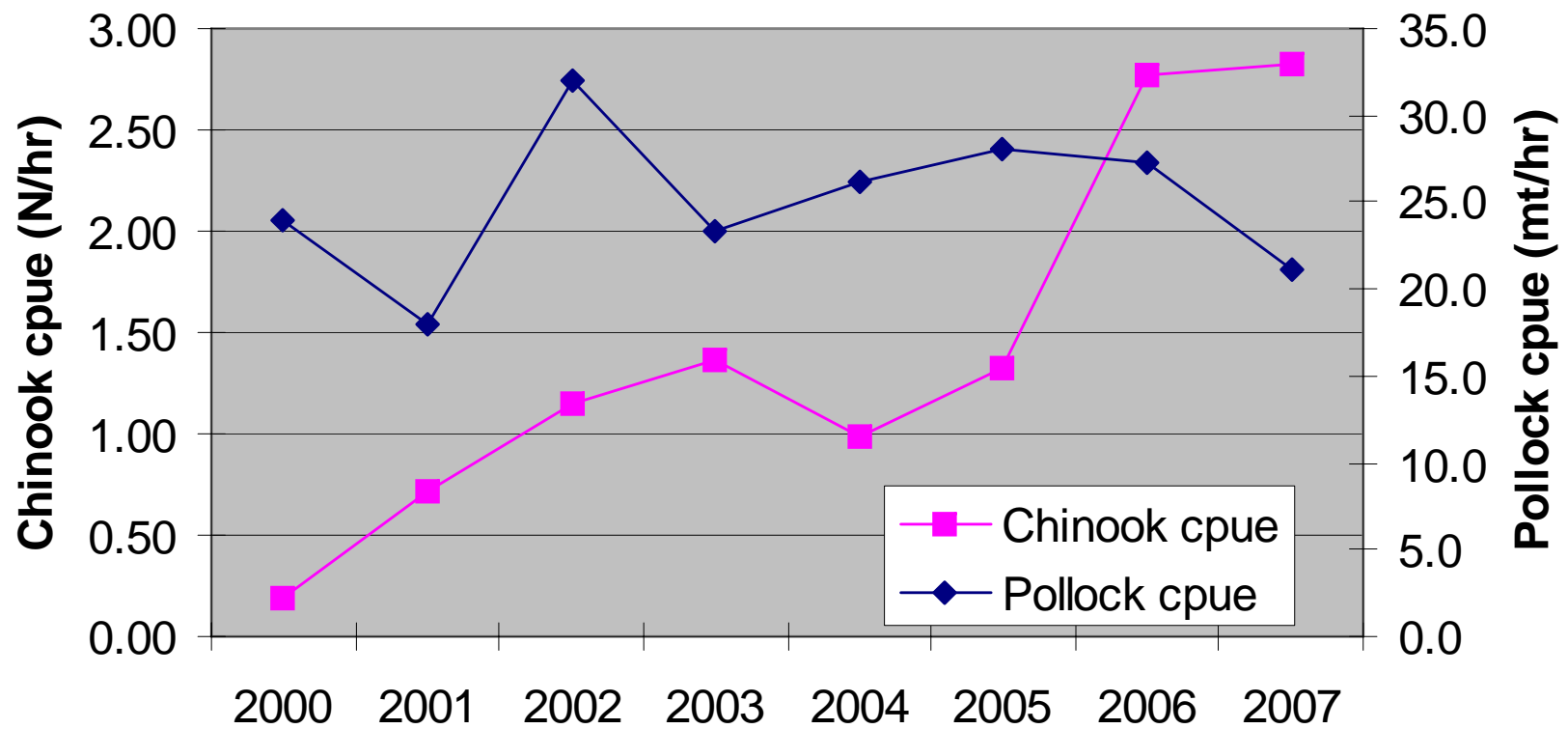


Source: NMFS observer data, Sea State database

Catch and bycatch statistics through March 15, 2000
 - 2007 seasons

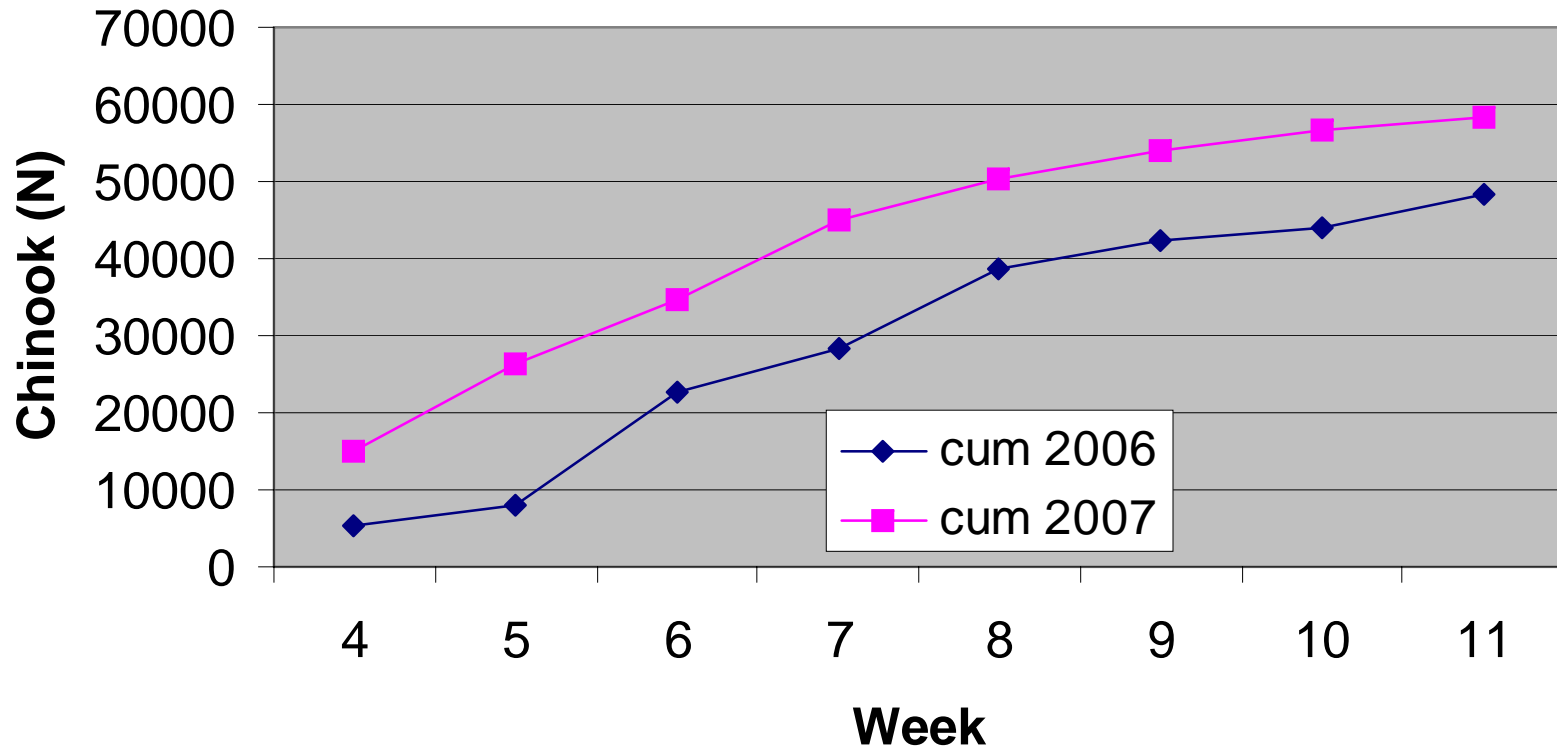
| Year | Pollock | Chinook | Chinook rate (N/mt) | Chinook cpue | Pollock cpue |
|--|---------|---------|---------------------------|-----------------|-----------------|
| 2000 | 313,784 | 2,448 | 0.01 | 0.19 | 24.0 |
| 2001 | 348,405 | 13,912 | 0.04 | 0.72 | 18.0 |
| 2002 | 459,074 | 16,450 | 0.04 | 1.14 | 31.9 |
| 2003 | 436,983 | 25,620 | 0.06 | 1.36 | 23.3 |
| 2004 | 468,512 | 17,627 | 0.04 | 0.98 | 26.1 |
| 2005 | 486,251 | 22,850 | 0.05 | 1.32 | 28.1 |
| 2006 | 489,247 | 49,508 | 0.10 | 2.77 | 27.3 |
| 2007 | 439,037 | 58,529 | 0.13 | 2.82 | 21.1 |
| Source: NMFS observer data, Sea State database | | | | | |

Chinook and pollock cpue through 3/15, 2000 - 2007



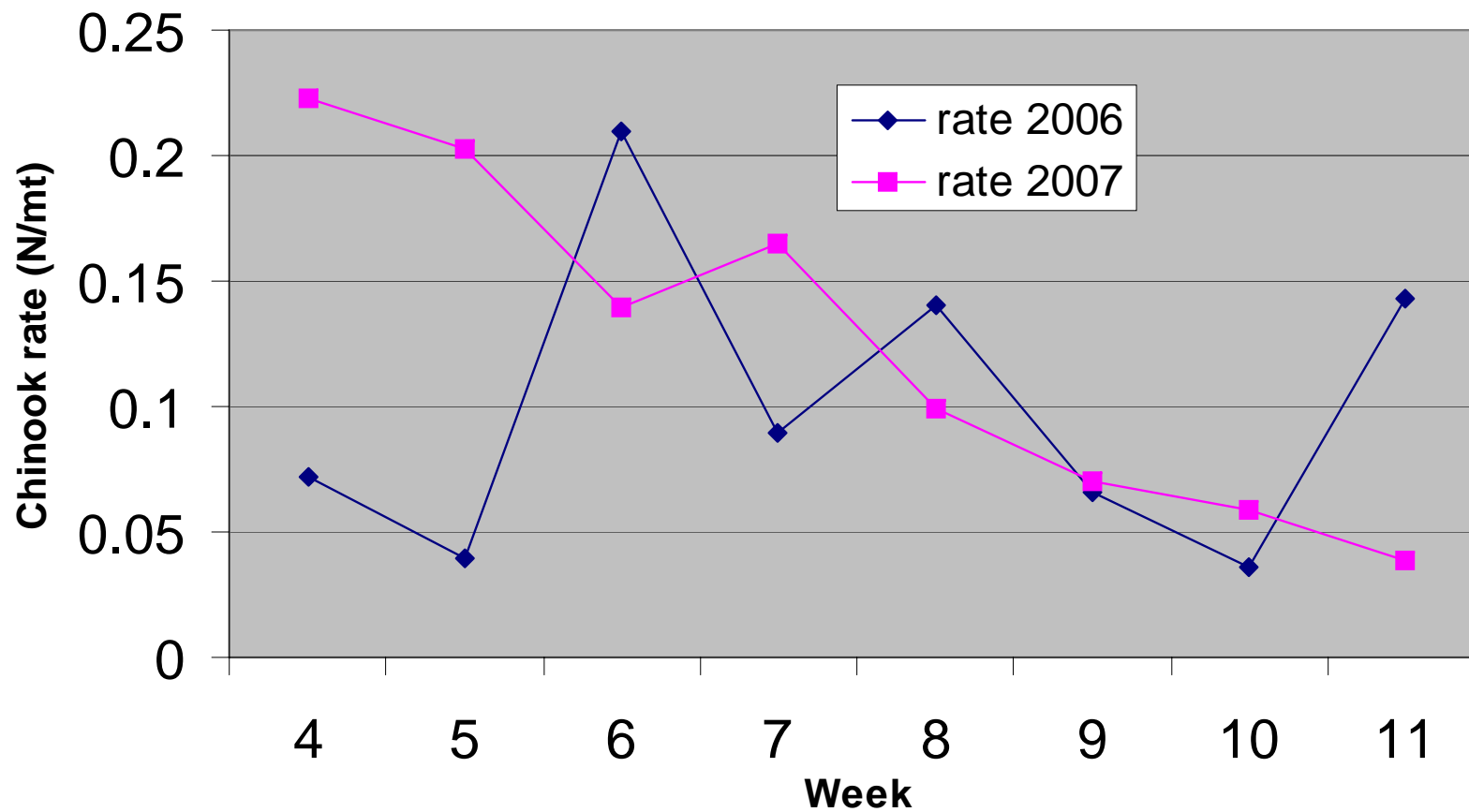
Source: NMFS observer data, Sea State database

Cumulative chinook catch by week, 2006 - 2007 A season



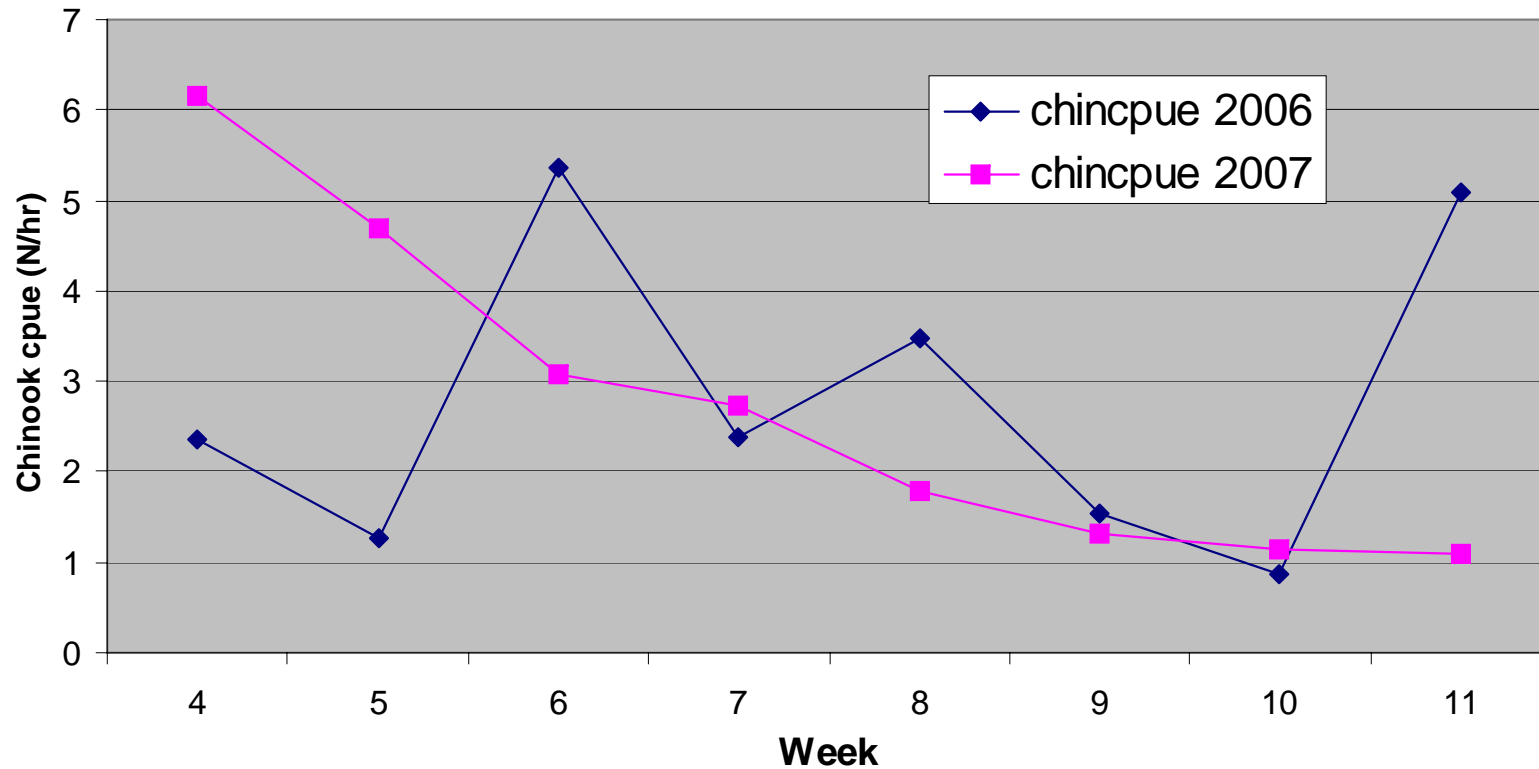
Source: NMFS observer data, Sea State database

Chinook rate by week, 2006 - 2007 A season

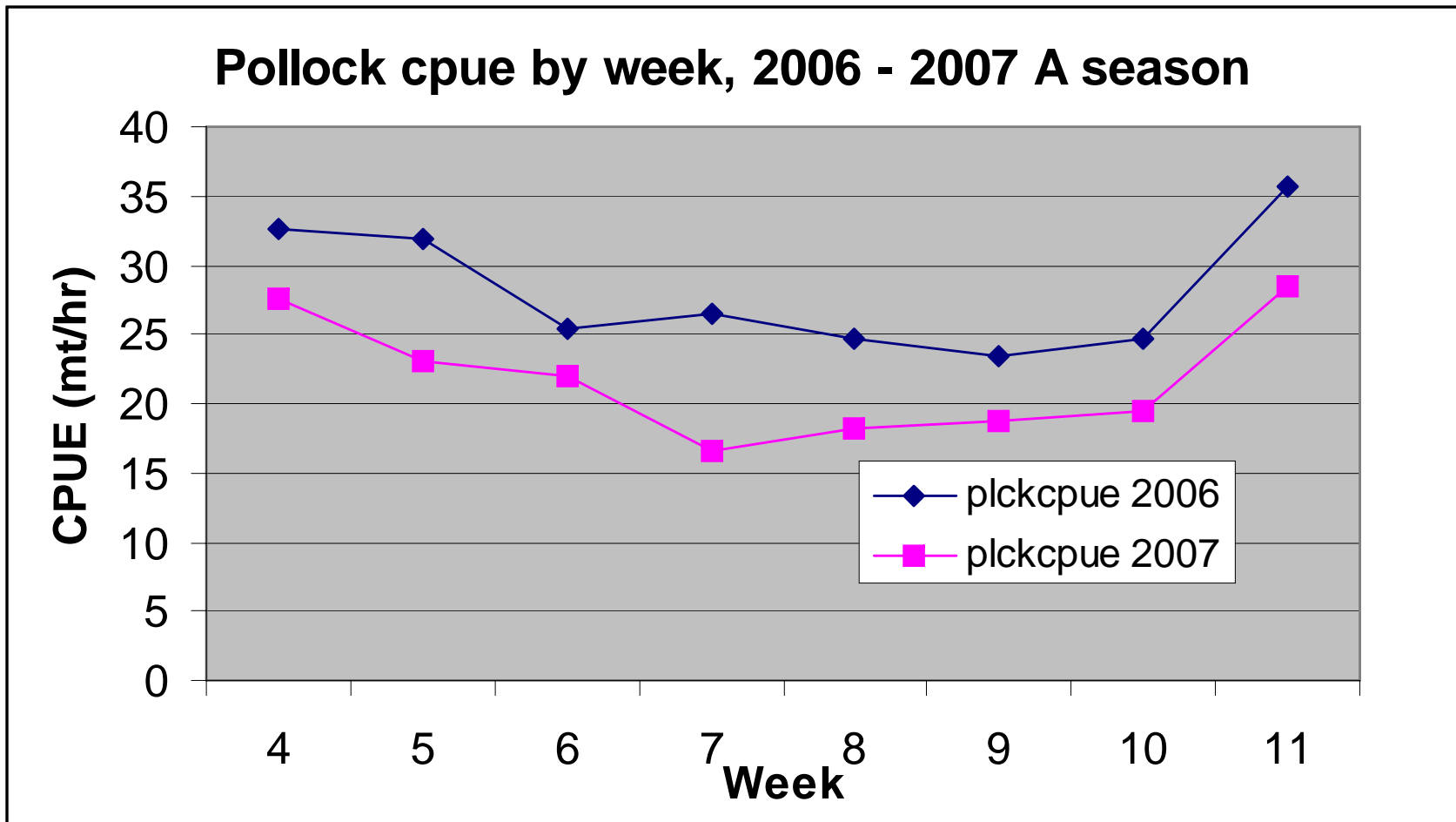


Source: NMFS observer data, Sea State database

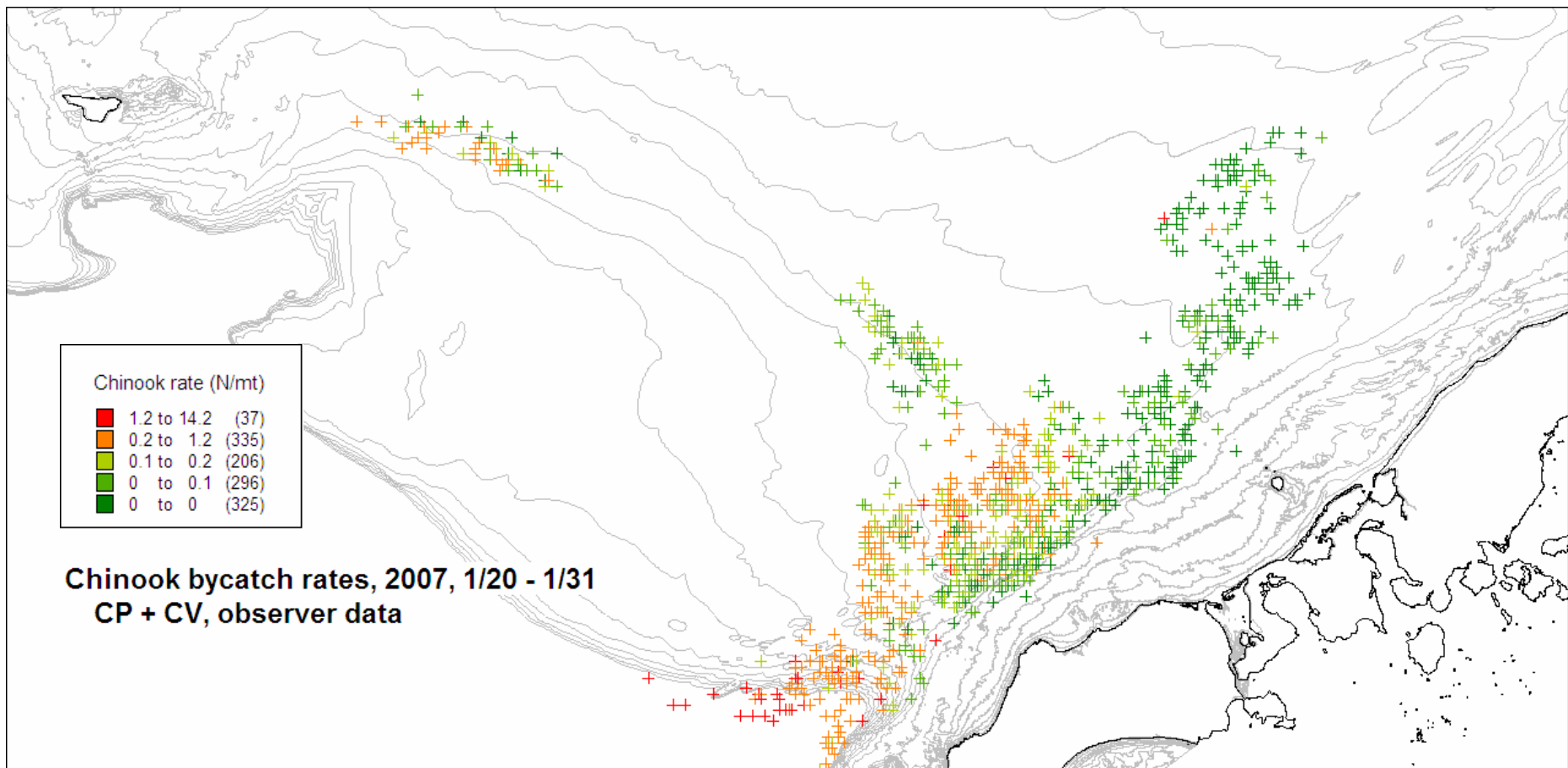
Chinook cpue by week, 2006 - 2007 A season

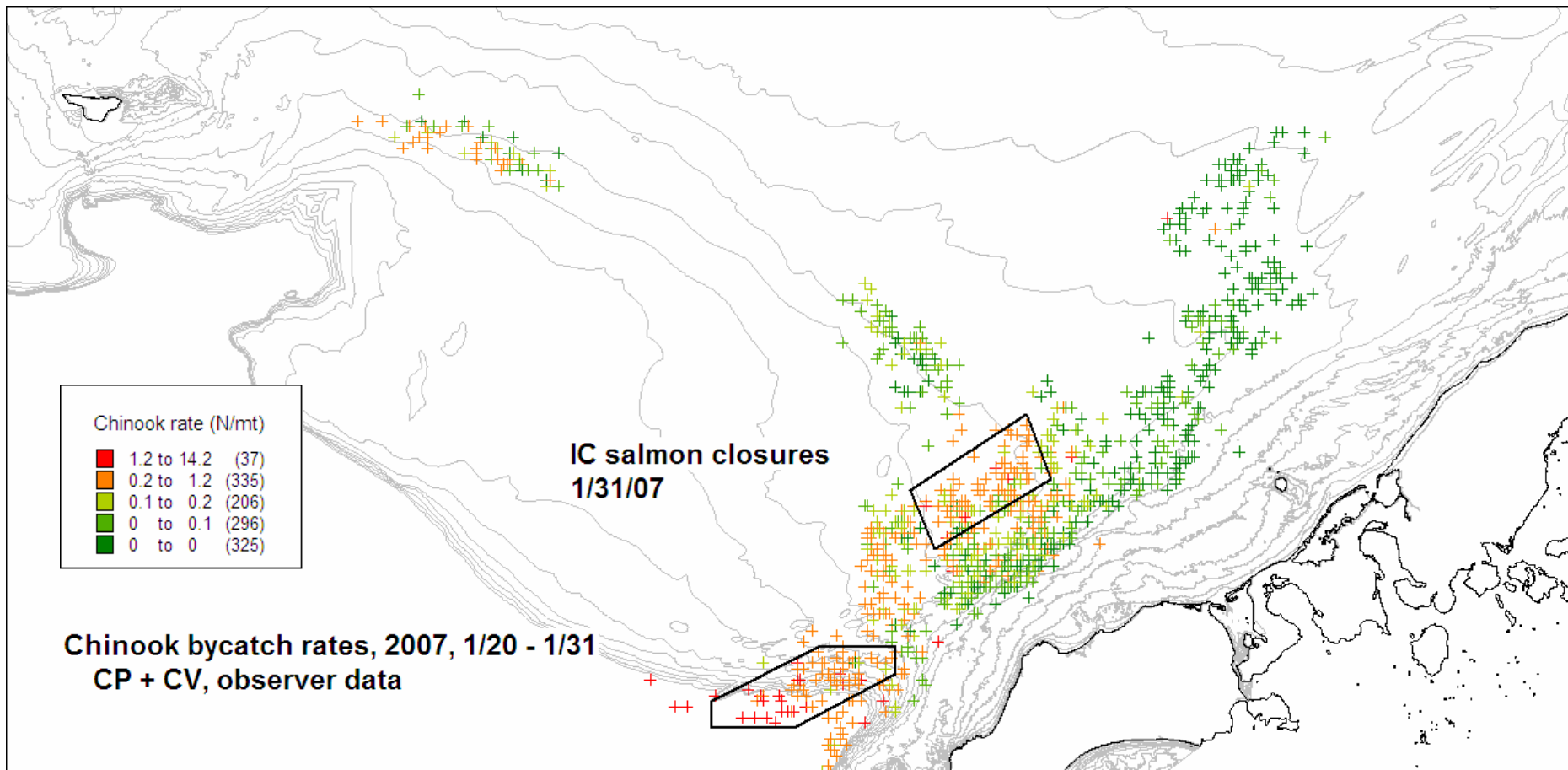


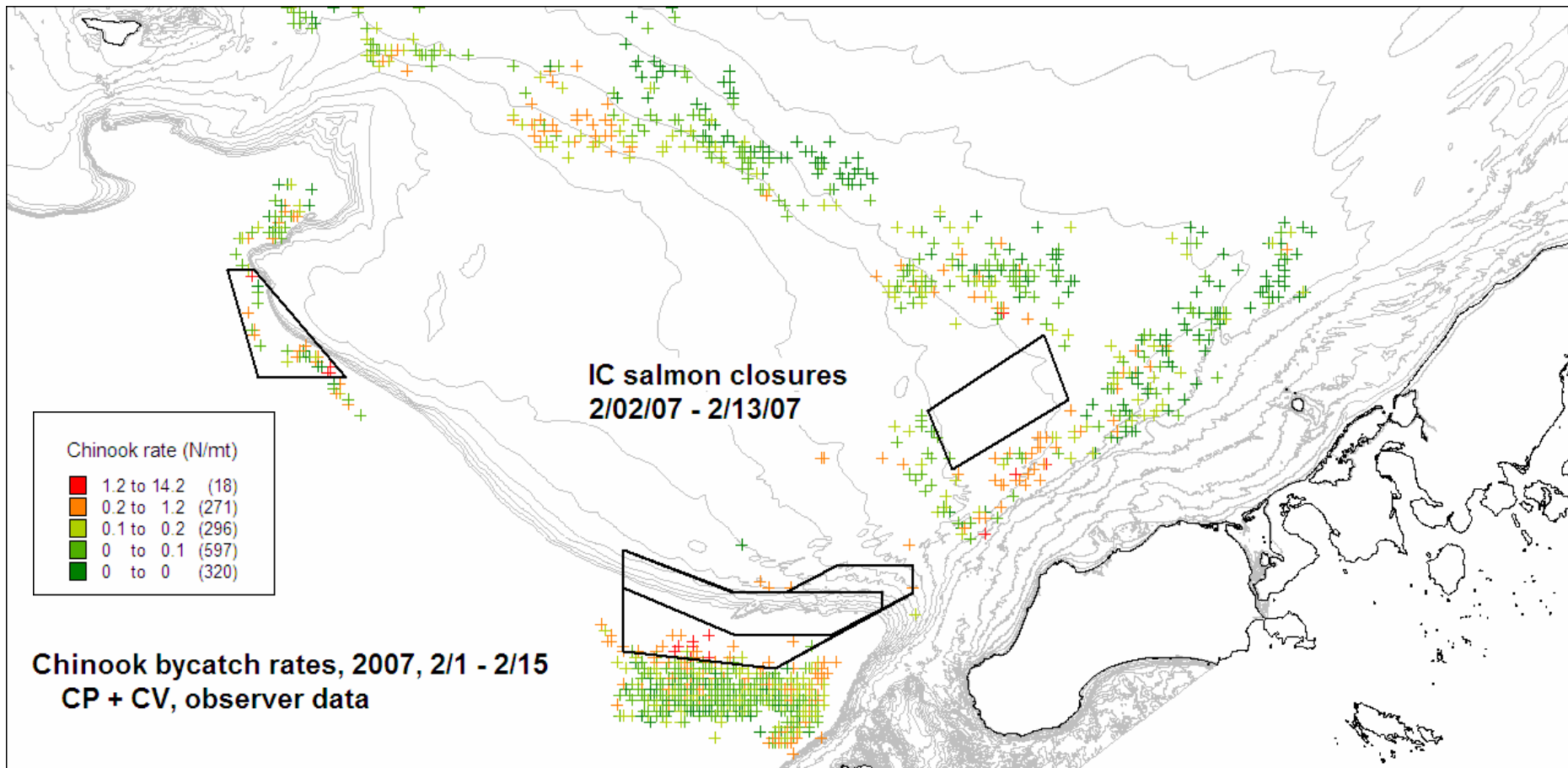
Source: NMFS observer data, Sea State database

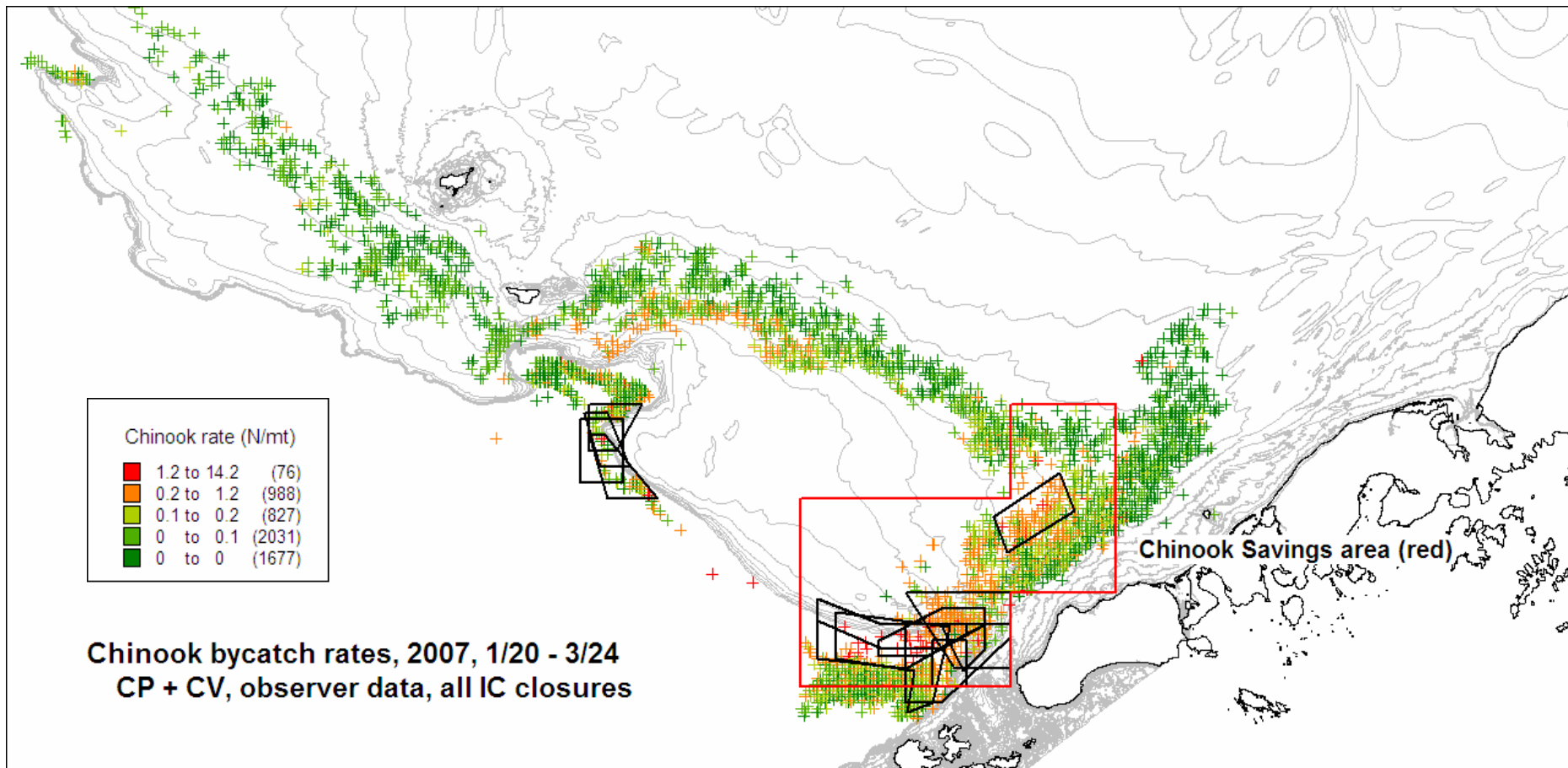


Source: NMFS observer data, Sea State database





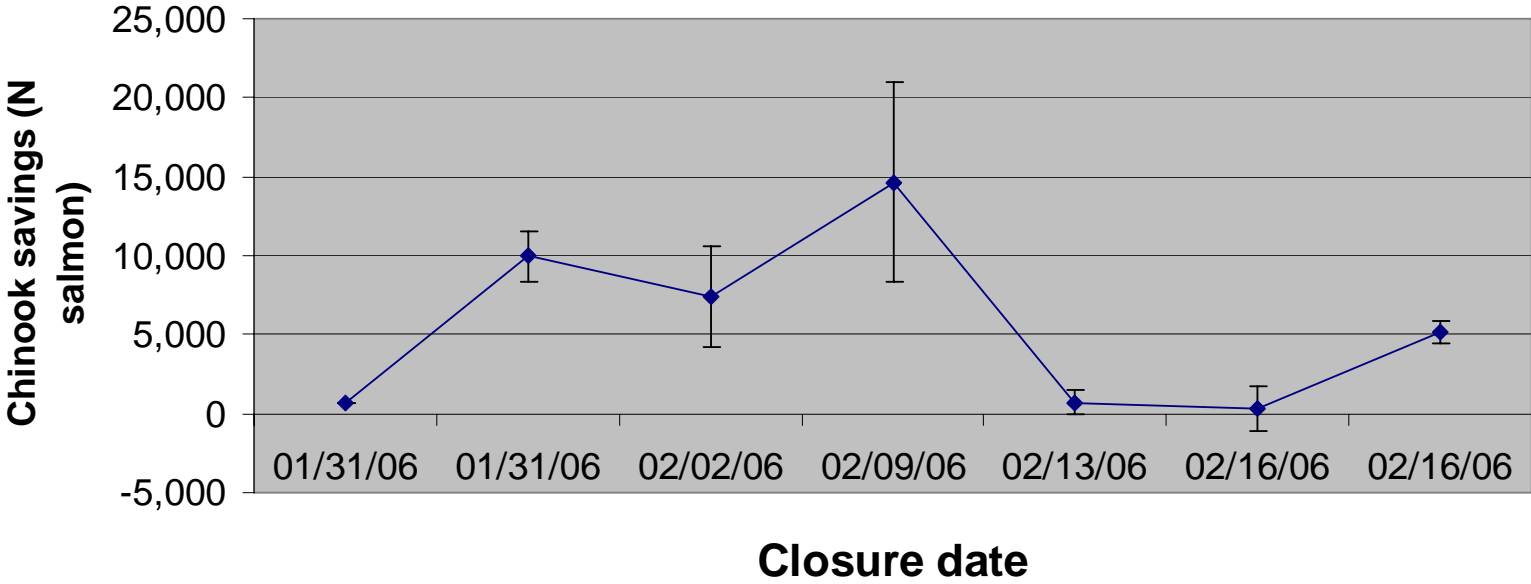




Estimated chinook savings from vessels with observer data that fished inside and outside closures using 5 day window before and after closures

| Closure date | Pollock after closure | Chinook after closure | Estimated chinook bycatch if no closure | Std err of estimate | Chinook saved (estimated - actual) |
|---------------|-----------------------|-----------------------|---|---------------------|------------------------------------|
| 01/31/06 | 810 | 111 | 782 | 10 | 672 |
| 01/31/06 | 11,286 | 1,189 | 11,161 | 815 | 9,972 |
| 02/02/06 | 12,352 | 3,517 | 10,908 | 1,637 | 7,391 |
| 02/09/06 | 22,305 | 3,930 | 18,559 | 3,226 | 14,629 |
| 02/13/06 | 3,795 | 561 | 1,282 | 409 | 721 |
| 02/16/06 | 6,947 | 1,214 | 1,514 | 739 | 300 |
| 02/16/06 | 28,858 | 3,007 | 8,142 | 380 | 5,135 |
| Totals | 86,353 | 13,529 | 52,349 | | 38,820 |

Estimated salmon savings by closure from vessels tracked fishing inside and outside closures, based on observer data using a 5 day window before and after closures



Pacific Prince EFP fishing tracks, 3/12 - 3/22

