

Year end Report of The FCA Offshore Rockfish Cooperative

Submitted to:

**Regional Administrator
NMFS Alaska
P.O. Box 21668
Juneau, Alaska 99802**

The Fishing Company of Alaska, Inc.

580 NACHES AVE SW, SUITE 100 • RENTON, WASHINGTON 98057
PHONE (425) 738-5205 • FAX (425) 988-2144

TABLE OF CONTENTS

	Page
I. INTRODUCTION	3
II. COOPERATIVE MEMBERSHIP	4
III. COOPERATIVE MANAGEMENT – MONITORING	4
IV. CO-OP ALLOCATIONS, TRANSFERS AND PERFORMANCE	7
V. WESTERN GULF OF ALASKA (WGOA) SIDEBOARDS	8
VI. CO-OP PROHIBITED SPECIES CATCH	8
VII. PROGRAM SIDEBOARDS	8
VIII. PENALTIES/CIVIL ACTIONS	9

Section I

INTRODUCTION

The Council adopted the proposed Central GOA Rockfish Program on June 14, 2010, to replace the Pilot Program, which expired on December 31, 2011. The final rule implementing Amendment 88, the Rockfish Program, became effective on December 27, 2011. The CGOA Rockfish Program is similar to the Pilot Program, but does incorporate some changes, such as:

1. Uses different qualifying years for eligibility for QS.
2. Uses a different suite of years to determine sideboard limits and the allocation of QS

The CGOA Rockfish Program takes over the management of three primary rockfish species in the Central Gulf of Alaska (CGOA): Pacific ocean perch (POP), northern rockfish (NR), and pelagic shelf rockfish (PSR). The CGOA Rockfish Program also allows for the formation of rockfish fishing cooperatives in the catcher vessel (CV) and catcher-processor (CP) sectors.

During the 2015 fishing season FCA cooperative performed quota transfers with the Gulf of Alaska Rockfish Best Use Cooperative.

Each cooperative received an annual harvest share allocation based on the qualified harvest history of its members (combined vessel quota shares or QS). In addition to the allocation of primary rockfish species (POP, NR, and PSR), catcher processor cooperatives also received allocations of secondary species, which included sablefish, thornyhead, shortraker, roughey rockfish and halibut PSC mortality. The catcher processor (CP) vessel co-ops did not receive allocations of Pacific cod. The CP cod was managed as a maximum retainable amount (MRA). Allocations to both the inshore and catcher processor sectors were based on the average percentages of retained catch and halibut PSC mortality usage of these species in the target rockfish fisheries during the qualifying period. These allocations are distributed to the cooperative members based on the amount of primary rockfish that the cooperative member held.

2015 marks the fourth year of the CGOA Rockfish Program, and in compliance with Amendment 88, this annual report is submitted to the Council as a summary of harvests, transfers, and cooperative performance during the 2015 rockfish fishing season in the Central Gulf of Alaska (CGOA).

Section II COOPERATIVE MEMBERSHIP

The 2015 FCA Cooperative consisted of three member vessels, Alaska Spirit (LLP #3043), Alaska Victory (LLP #2080), and Alaska Warrior (LLP #2083; the Alaska Spirit actively fished in the Rockfish Program.

Member Licenses

Vessel Name	ADF&G	USCG	LLP
Alaska Spirit	59870	554913	3043
Alaska Victory	61083	569752	2080
Alaska Warrior	56965	590350	2083

Section III COOPERATIVE MANAGEMENT- MONITORING

The FCA Cooperative was represented and managed by Bill McGill of The Fishing Company of Alaska, Inc. in cooperation and coordination with the other offshore cooperative, Gulf of Alaska Rockfish Best Use Cooperative, inshore participants, and the National Marine Fisheries Service (in-season management).

It was FCA's 2015 cooperative harvesting strategy to manage the harvesting in the central GOA utilizing the Alaska Spirit and Alaska Victory to take the quota. It was later determined that the Alaska Spirit would take the co-op fish in the central GOA.

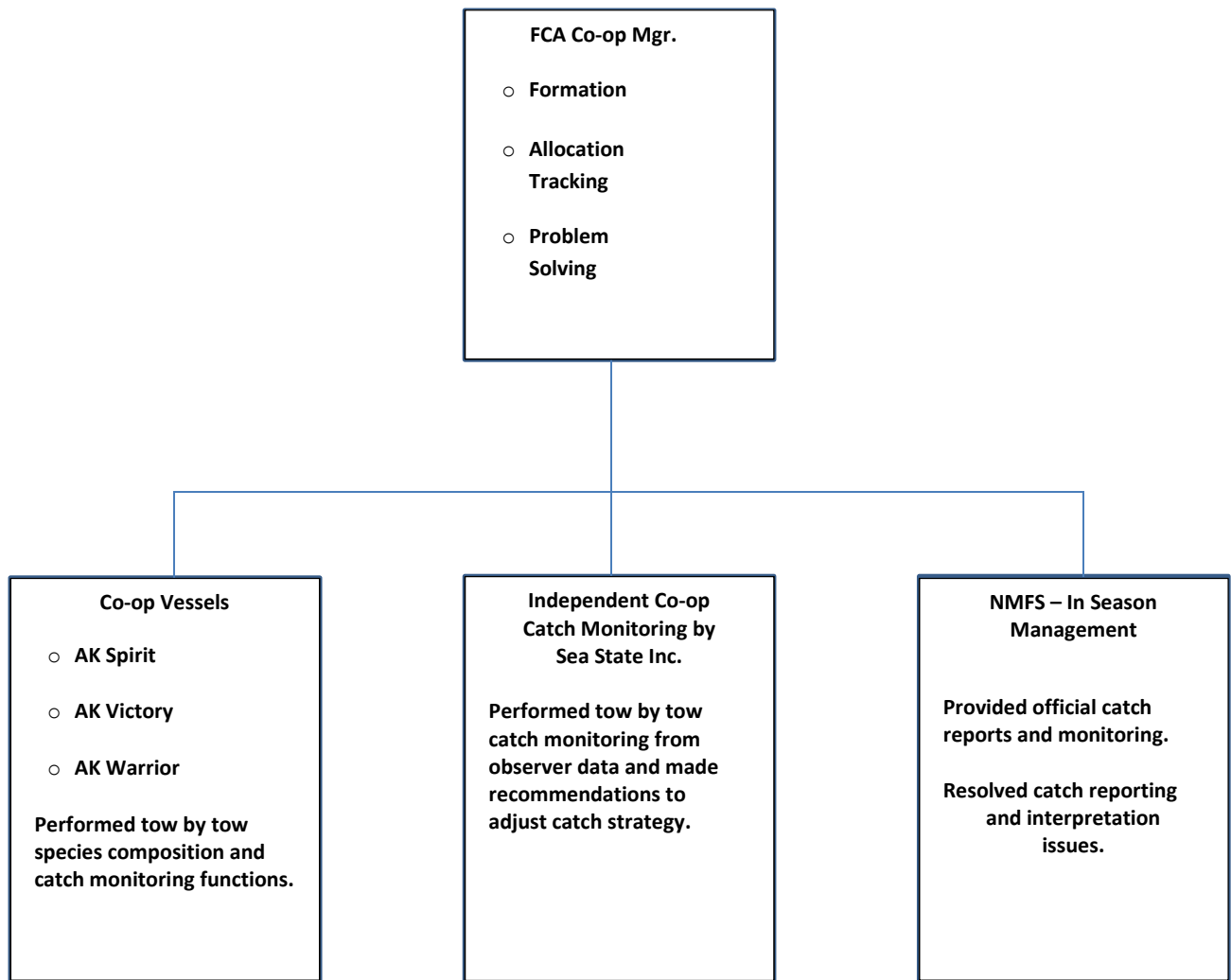
Based on our fishing experience in the GOA cooperative programs, FCA Cooperative developed an effective catch monitoring program and employed fishing techniques that were intended to maximize harvest and minimize PSC bycatch in the CGOA without exceeding any species or PSC allocations.

Vessel Catch-Monitoring

All of the FCA Cooperative vessels use onboard catch monitoring systems that allow them to compute and monitor catch on a tow by tow basis based on real time hail estimates, species composition, and observer information. Each vessel's accounting is compared to catch reports compiled by an independent catch monitoring company, Sea State, Inc., who utilized the most current official NMFS observer catch information. The comparative data was then transmitted to the vessels. Any discrepancies between vessel catch data and that compiled by Sea State were rectified.

In addition, a third check of catch data accuracy was made when the co-op manager compared the vessel and Sea State catch numbers with the NMFS account balance.

Figure 1. Schematic of Fishing Co. of Alaska Rockfish Cooperative Operations and Management.



Section IV CO-OP ALLOCATIONS, TRANSFERS and PERFORMANCE

FCA Cooperative allocations and transfers for the 2015 season are summarized by species in Table 1.

Table 1 Central Gulf of Alaska Allocations and Transfers IN and OUT of Cooperative by Species.

NAME	FCA Allocation	Transferred In from or Out to the coop listed	In Transfers	Out Transfers	Total QS	Catch	CQ Remaining	Percent Harvested
CGOA Dusky (PSR)	230.171	Gulf of Alaska Best Use Cooperative	0	65.6	164.571	164.487	0.084	100%
CGOA Northern	464.531	Gulf of Alaska Best Use Cooperative	0	86.2	378.331	378.329	0.002	100%
CGOA POP	3,427.065	Gulf of Alaska Best Use Cooperative	0	1.4	3,425.665	3,416.498	9.167	99.7%
CGOA Rougheyeye	176.708	GOA BUC	0	25.0	151.708	36.692	115.016	21.2%
CGOA Sablefish	77.652	Gulf of Alaska Best Use Cooperative	0	10.0	67.652	56.817	10.835	83.9%
CGOA Shortraker	75.422	Gulf of Alaska Best Use Cooperative	0	5.0	70.422	53.169	17.253	75.5%
CGOA Thornyhead	110.128	Gulf of Alaska Best Use Cooperative	0	20.0	90.128	22.956	67.172	25.5%
CGOA Halibut - PSC	35.194		0	0	35.194	28.906	6.288	82.1%
GOA DW Complex Halibut SB	9.633		0	0	9.633	0.0	9.633	0%
GOA SW Complex Halibut SB	0		0	0	0	0	0	0%

No Chinook were taken during the 2015 Rockfish Program fishery.

Section V
WESTERN GULF OF ALASKA (WGOA) SIDEBOARDS

Table 2 Western GOA Sideboard Species

Species Group	Area	Sideboard Percentage	Total CP Sideboard Limit (mt)	FCA Co-op Sideboard Limit (mt)	FCA Catch (mt)	FCA Balance (mt)	FCA % Remaining
Northern Rockfish	WG	87.89	911	800.560	159.448	641.112	80.1%
Pacific Ocean Perch	WG	61.49	1,165	716.255	601.547	114.708	16.0%
Dusky (PSR)	WG	92.31	214	197.557	30.329	167.228	84.6%

Section VI
CO-OP CENTRAL GOA PROHIBITED SPECIES CATCH (PSC)

The FCA co-op was initially allocated 35.194 mts of halibut PSC and used 28.941 mts.

Section VII
PROGRAM SIDEBOARDS

The Rockfish Program established sideboard limitations (not allocations) that limited LLP holders participating in the program from expanding their harvests in other fisheries. These sideboard limitations apply only in July, historically the most active month for rockfish fishing.

This fishery opened under an industry agreement that further limited catch of the sideboard species.

Section VIII
PENALTIES/CIVIL ACTIONS

There were no NMFS enforcement actions or other sanctions taken against the FCA cooperative fishing in the RP.