

# **Year End Report of The Fishing Company of Alaska, Inc.**

---

## **Offshore Rockfish Cooperative**

Respectfully submitted to:  
**Regional Administrator**  
**NMFS Alaska**  
**P.O. Box 21668**  
**Juneau, Alaska 99802**

**December 15, 2014**

**The Fishing Company of Alaska, Inc.**  
580 NACHES AVE SW, SUITE 100 • RENTON, WASHINGTON 98057  
PHONE (425) 738-5205 • FAX (425) 988-2144

# TABLE OF CONTENTS

	Page
I. INTRODUCTION .....	3
II. COOPERATIVE MEMBERSHIP .....	3
III. COOPERATIVE MANAGEMENT-MONITORING .....	4
IV. CO-OP ALLOCATIONS, TRANSFERS AND PERFORMANCE .....	6
V. WESTERN GULF OF ALASKA (WGOA) SIDEBOARDS .....	7
VI. CO-OP PROHIBITED SPECIES CATCH .....	7
VII. PENALTIES/CIVIL ACTIONS .....	7
VIII. PENALTIES/CIVIL ACTIONS .....	7

## **Section I INTRODUCTION**

The council adopted the proposed Central GOA Rockfish Program on June 14, 2010, to replace the Pilot Program, which expired on December 31, 2011. The final rule implementing Amendment 88, the Rockfish Program, became effective on December 27, 2011.

The CGOA Rockfish Program manages the three primary rockfish species in the Central Gulf of Alaska (CGOA): Pacific Ocean Perch (POP), northern rockfish (NR), and pelagic shelf rockfish (PSR) fisheries. The CGOA Rockfish Program allows for the formation of rockfish fishing cooperatives in the CV and CP sectors.

During the 2014 season the FCA Cooperative performed quota transfers with the Gulf of Alaska Best Use Cooperative.

Each Cooperative received an annual harvest share allocation based on the qualified harvest history of its members (combined vessel quota shares or QS). In addition to the allocation of primary rockfish species (POP, NR, PSR), catcher processor cooperatives also received allocations of secondary species, which included sablefish, thornyhead, shortraker, roughey rockfish and halibut PSC mortality. The catcher processor (CP) vessel co-ops did not receive allocations of Pacific cod. Allocations to both the inshore and catcher processor sectors were based on the average percentages of retained catch and halibut mortality usage of these species in the target rockfish fisheries during the qualifying period. These allocations were distributed to the cooperative members based on the amount of primary rockfish that the cooperative member held.

2014 marks the third year of the CGOA Rockfish Program, and in compliance with Amendment 88, this annual report is submitted to the Council as a summary of harvests, transfers, and cooperative performance during the 2014 rockfish fishing season in the Central Gulf of Alaska (CGOA).

## **Section II COOPERATIVE MEMBERSHIP**

The Fishing Company of Alaska Cooperative (FCA) consisted of the three member vessels AK Spirit (LLP # 3043), AK Victory (LLP # 2083), and AK Warrior (LLP # 2083). The Alaska Spirit and Victory actively fished in the RP.

### **Member Licenses**

Vessel Name	ADF&G	USCG	LLP
Alaska Spirit	59870	554913	3043
Alaska Victory	61083	569752	2080
Alaska Warrior	56965	590350	2083

## Section III

### COOPERATIVE MANAGEMENT- MONITORING

The Fishing Company of Alaska (FCA) cooperative was represented and managed by Bill McGill of Fishing Company of Alaska, Inc. in cooperation and coordination with the other offshore cooperative, Gulf of Alaska Rockfish Best Use Cooperative, the inshore inter-cooperative manager, Julie Bonney of the Alaska Groundfish Data Bank, and the National Marine Fisheries Service (in-season management).

It was FCA's 2014 cooperative harvesting strategy to bring the entire allocation under one cooperative and manage the harvesting in the central GOA utilizing the AK Spirit and AK Victory to take the quota.

Based on its fishing experience in the GOA cooperative programs, FCA developed an effective onboard catch monitoring program and employed fishing techniques that were intended to maximize harvest and minimize PSC Bycatch in the CGOA without exceeding any species or PSC allocations.

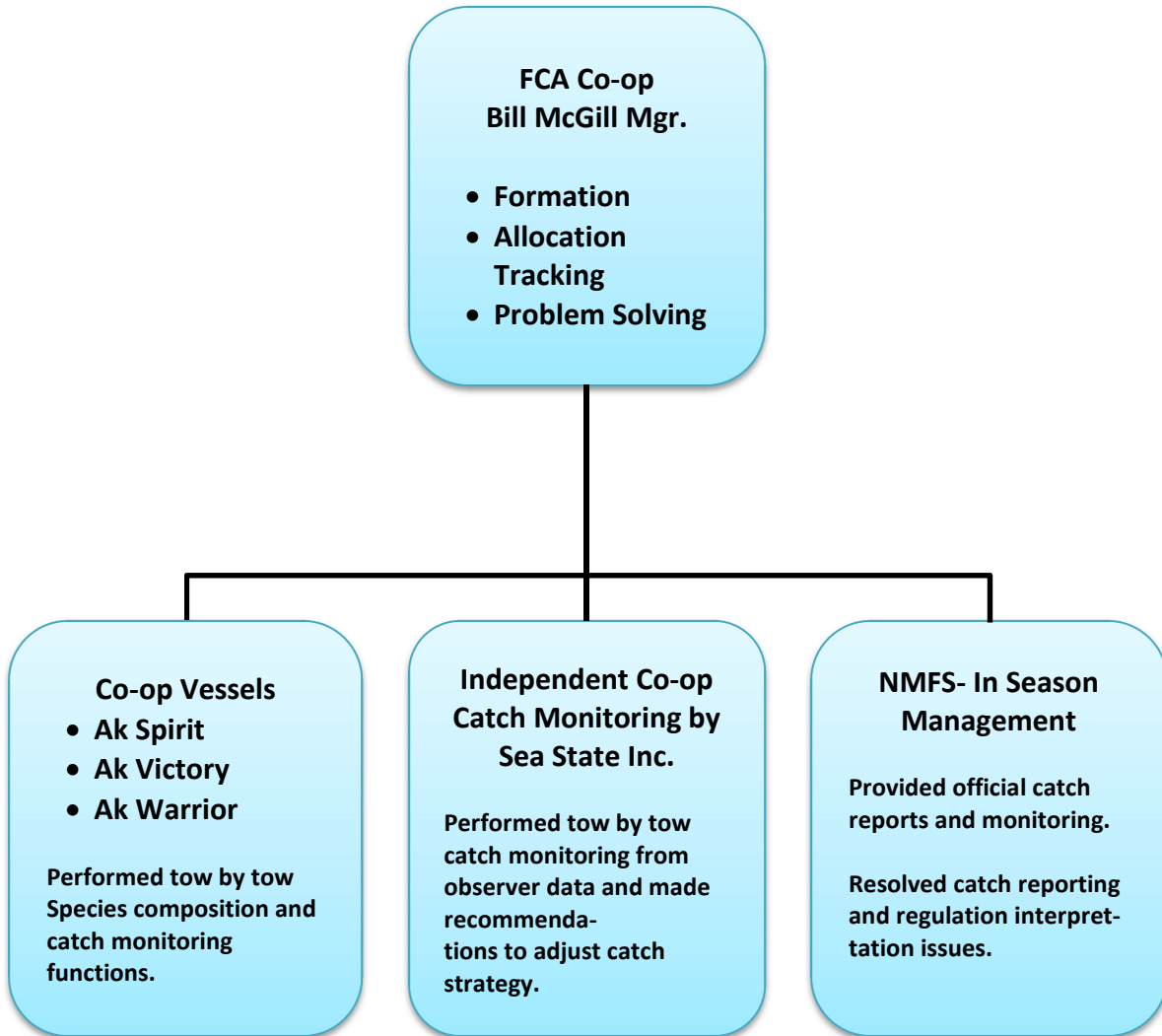
#### Vessel Catch-Monitoring

All of FCA's co-op vessels were equipped with onboard catch monitoring systems that allowed them to compute and monitor catch on a tow by tow basis based on real time haul estimates, species composition, and observer information. Each vessel's accounting was compared to catch reports compiled by an independent catch monitoring company, Sea State Inc., who utilized the most current official NMFS observer catch information. The comparative data was then transmitted to the vessels via the co-op manager and any discrepancies between the vessels catch estimates and those compiled by Sea State were immediately rectified.

In addition to the above, a third check of catch data accuracy was made when the co-op manager also compared the vessels and Sea State catch numbers with the NMFS official catch accounting in Juneau.

**Figure 1** below shows the schematic outlining the co-op's operations and the flow of information among the contributing parties.

**Figure 1. Schematic of Fishing Co. of Alaska Rockfish Cooperative Operations and Management.**



## Section IV CO-OP ALLOCATIONS, TRANSFERS and PERFORMANCE

FCA cooperative allocations and transfers for the 2014 season are summarized by species in Table 1.

**Table 1 Central Gulf of Alaska Allocations and Transfers IN and OUT of Cooperative by Species**

NAME	FCA Allocation	Transferred In from or out to the co-op listed	In Transfers	Out Transfers	Total QS	Catch	CQ Remaining	Percent Harvested
CGOA Dusky (PSR)	252.615	Gulf of Alaska Best Use Cooperative	0	28.3	224.315	224.283	0.032	100%
CGOA Northern	496.437	Gulf of Alaska Best Use Cooperative	0	23.4	473.037	473.022	0.015	100%
CGOA POP	2,878.952	Gulf of Alaska Best Use Cooperative	0	28.8	2,850.152	2850.060	0.092	100%
CGOA Rougheye	241.575	Gulf of Alaska Best Use Cooperative	0	160.0	81.575	76.145	5.430	93%
CGOA Sablefish	78.035	Gulf of Alaska Best Use Cooperative	0	35.3	42.735	42.692	0.043	100%
CGOA Shortraker	75.422	Gulf of Alaska Best Use Cooperative	0	13.7	61.722	61.641	0.081	100%
CGOA Thornyhead	110.128		0	0	110.128	48.431	61.697	44%
CGOA Halibut PSC	35.194		0	0	35.194	9.08121	26.11279	26%
GOA DW Complex Halibut SB	10.515		0	0	10.515	0.0	10.515	0%
GOA SW Complex Halibut SB	0		0	0	0	0	0	0%

73 Chinook salmon were taken in the RP fishery.

## Section V

### WESTERN GULF OF ALASKA (WGOA) SIDEBOARDS

Table 2 Western GOA Sideboard Species

Species Group	Area	Sideboard Percentage	Total CP Sideboard Limit (mt)	FCA Co-op Sideboard Limit (mt)	FCA Catch (mt)	FCA Balance (mt)	FCA % Remaining
Northern Rockfish	WG	87.89	970	852.146	0	852.146	0%
Pacific Ocean Perch	WG	61.49	1,214	746.436	0	746.436	0%
Dusky (PSR)	WG	92.31	229	211.573	0	211.573	0%

## Section VI

### CO-OP CENTRAL GOA PROHIBITED SPECIES CATCH (PSC)

The FCA co-op was initially allocated 35.194 mts of halibut PSC and used 9.081 mts.

## Section VII

### PROGRAM SIDEBOARDS

The Rockfish Program established sideboard limitations (not allocations) that limited LLP holders participating in the program from expanding their harvests in other fisheries. These sideboard limits apply only in July, historically the most active month for targeting rockfish in the WGOA.

The sideboard fishery did not open in 2014.

## Section VIII

### PENALTIES/CIVIL ACTIONS

There were no NMFS enforcement actions or other sanctions taken against the FCA cooperative fishing in the RP.